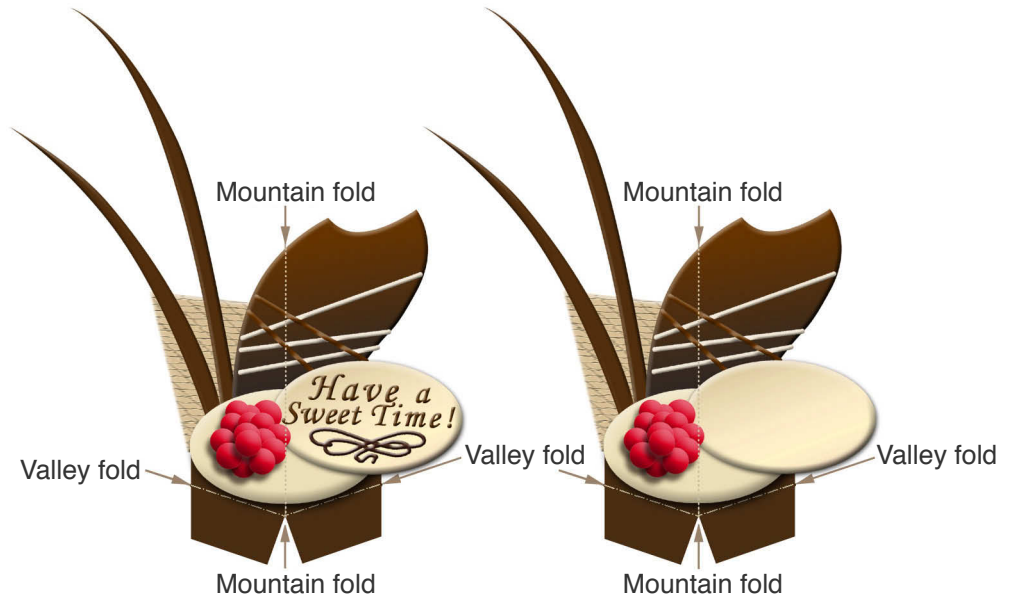




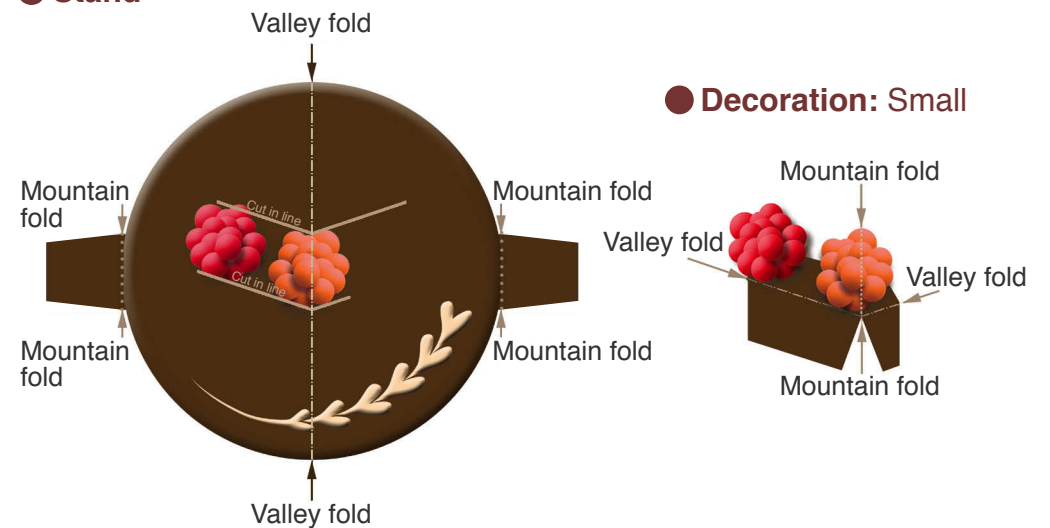
● **Decoration: Large (Valentine)**

● **Decoration: Large (Plain)**



● **Stand**

● **Decoration: Small**



Assembly Instructions

..... **Mountain fold** (dotted line) ——— **Scissors line** (solid line)
 *Make a mountain fold. *Cut along the line.

- - - - - **Valley fold** (dashed and dotted line) ——— **Cut in line** (solid line)
 *Make a valley fold. *Make a cut.



scissors, paste, cutter, a used ballpoint pen (tracing along the fold lines makes them easier to fold)

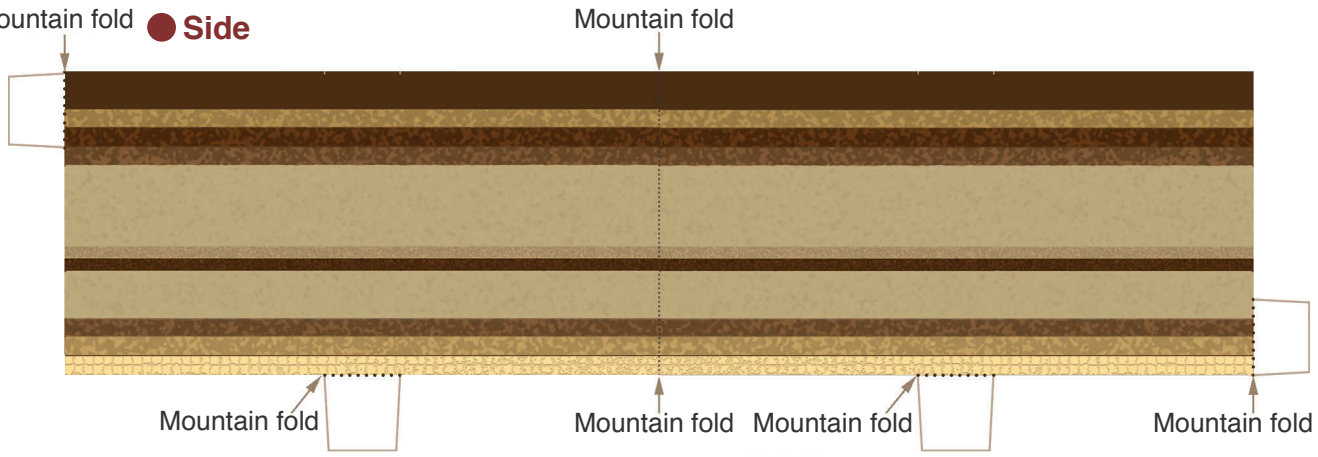


Caution: Glue, scissors, cutter and other tools may be dangerous to young children so be sure to keep them out of the reach of young children.

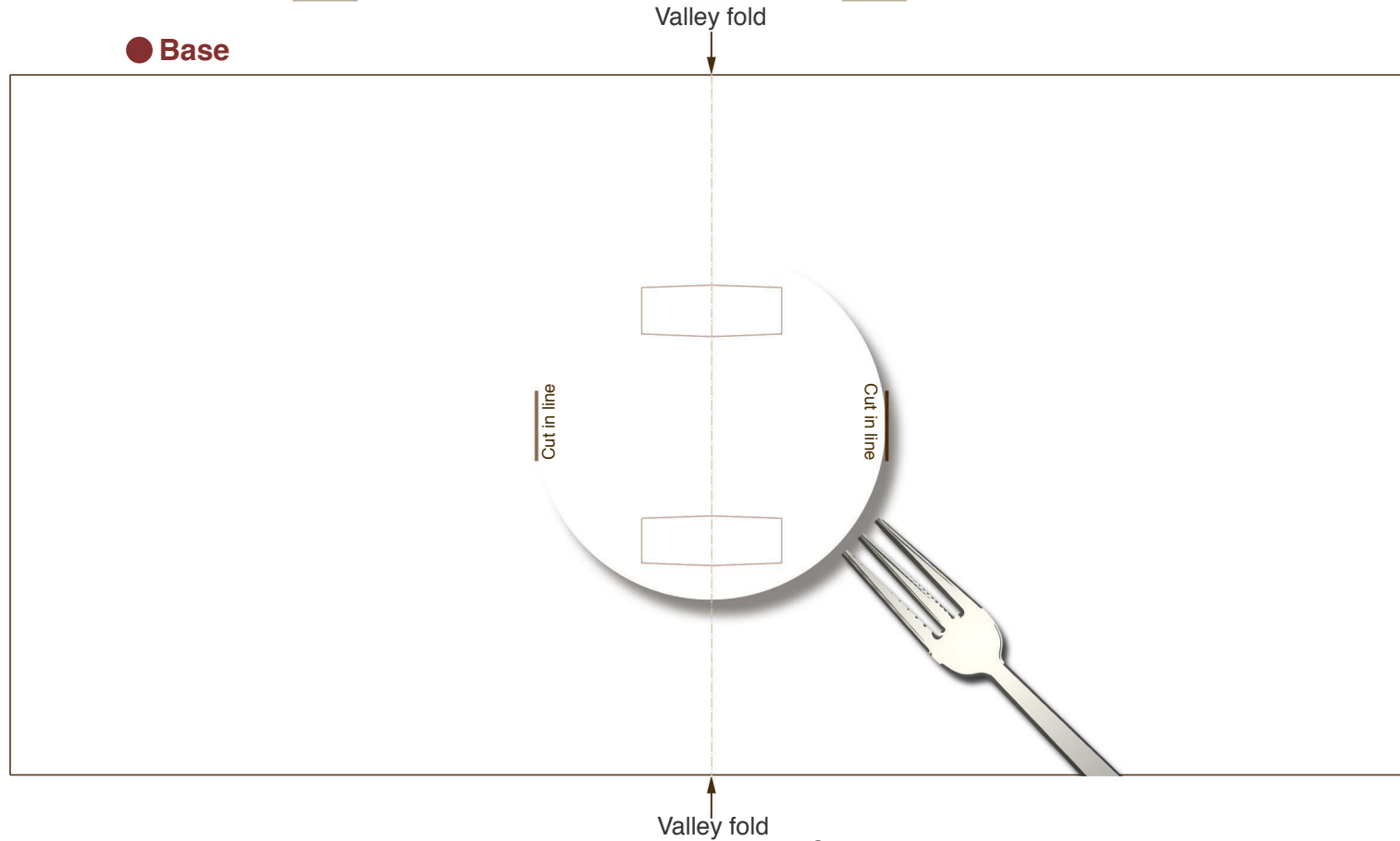
Canon Pop-up Card (Chocolate-cake) : Pattern

Canon® is a registered trademark of Canon Inc. © HIROKO

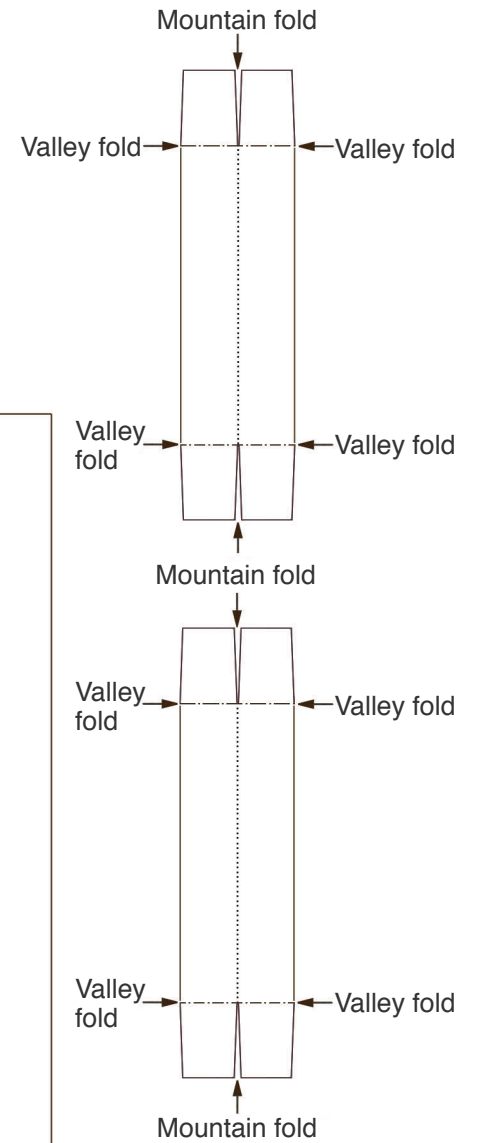
Mountain fold ● Side



● Base



● Supports



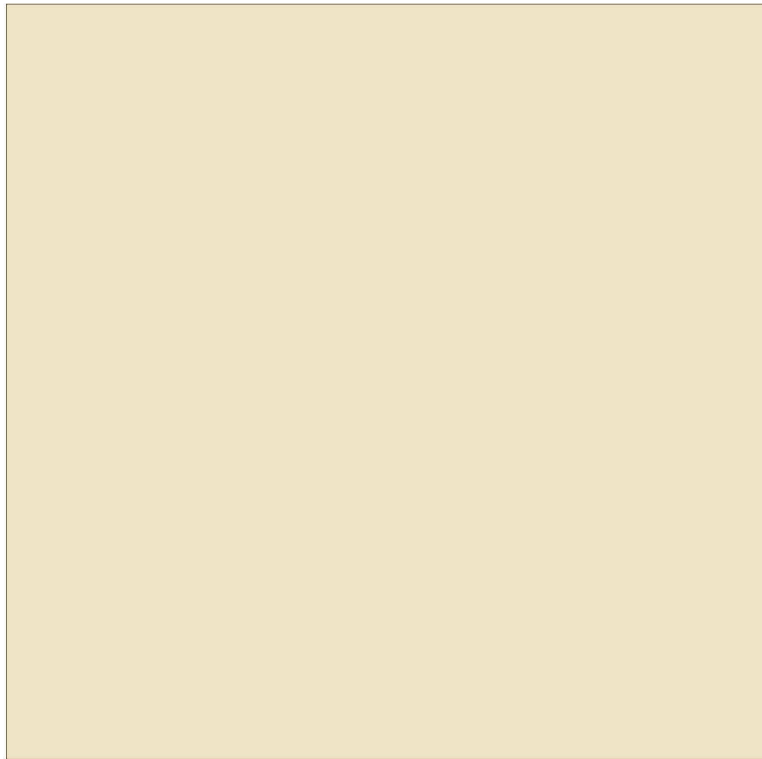
● **Front cover** (Valentine's Day)



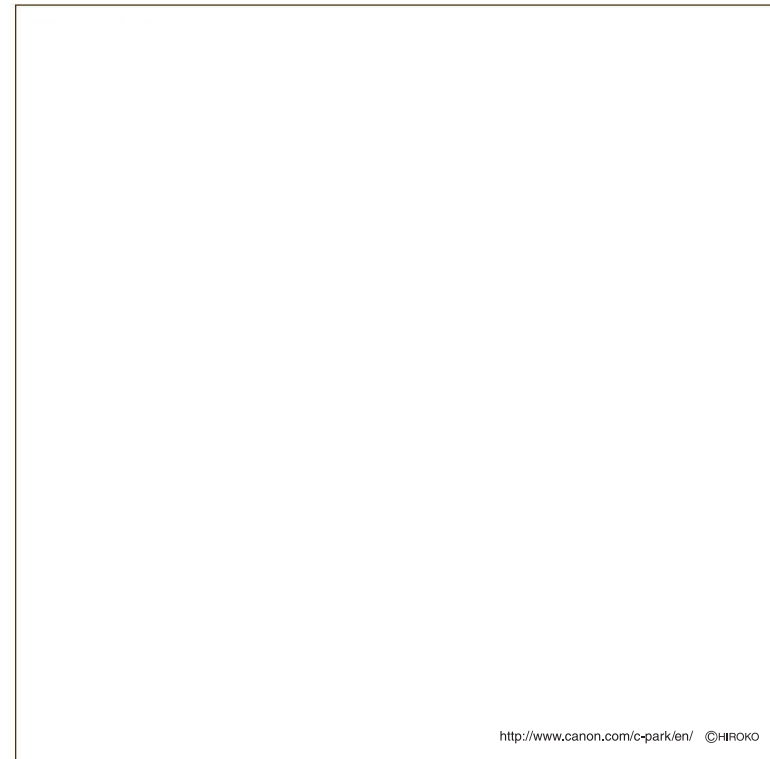
● **Front cover** (Happy Birthday)



● **Front cover (Plain)**



● **Back cover**



<http://www.canon.com/c-park/en/> ©HIROKO