

PAPER CRAFT

<http://www.canon.com/c-park/en/>



View of completed model

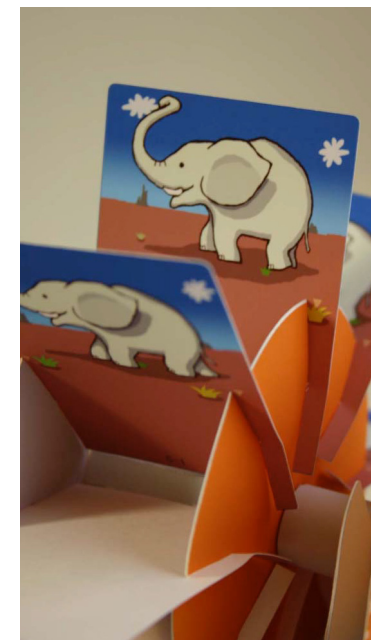
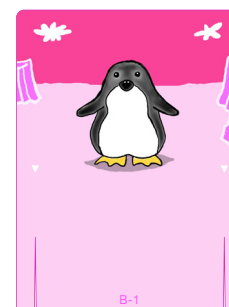
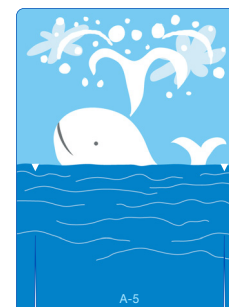
Flip Animation

This flip animation model is an original papercraft project in the form of a waterwheel. When you spin the wheel, the eight illustrations on the panels of the wheel merge to create an amusing animation. The wheel spins when you move the handle to the right clockwise. Three illustrated animation sequences are provided: a whale rising from the sea, a plodding elephant, and a leaping penguin. The simple base design matches any interior decor.

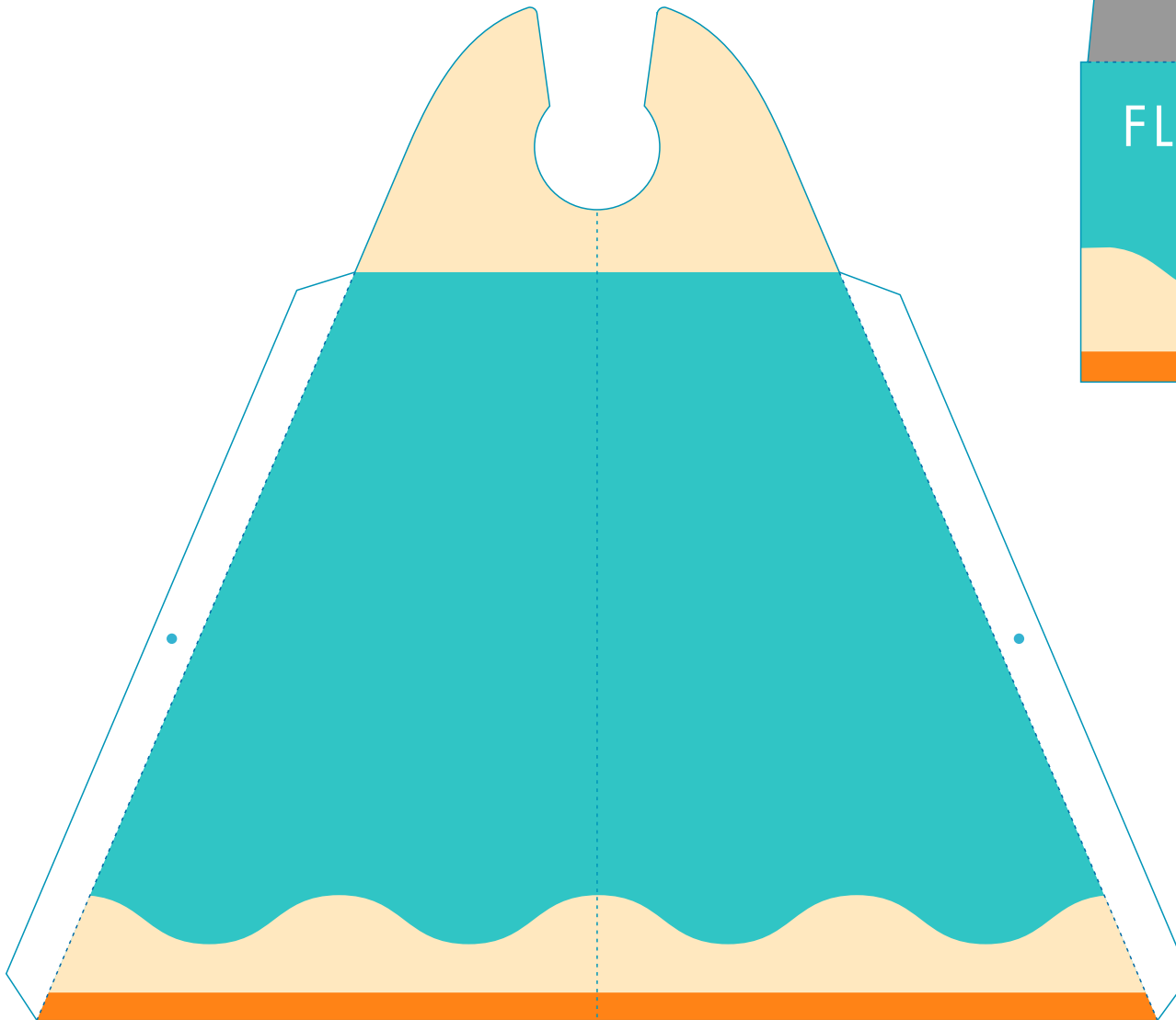
■ Parts list (pattern): Eleven A4 sheets (No.1 to No.11)

■ No. of Parts: 46

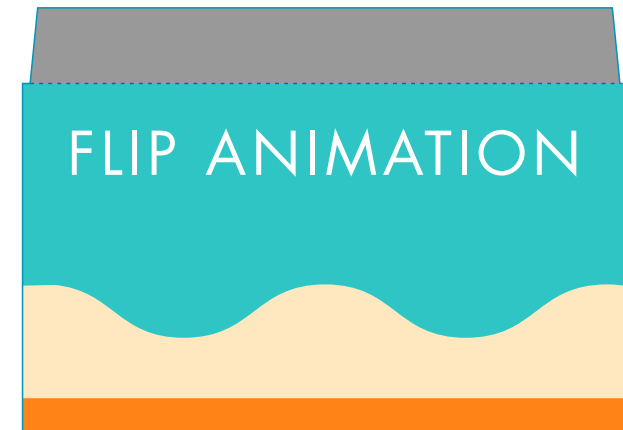
*Build the model by carefully reading the Assembly Instructions, in the parts sheet page order.



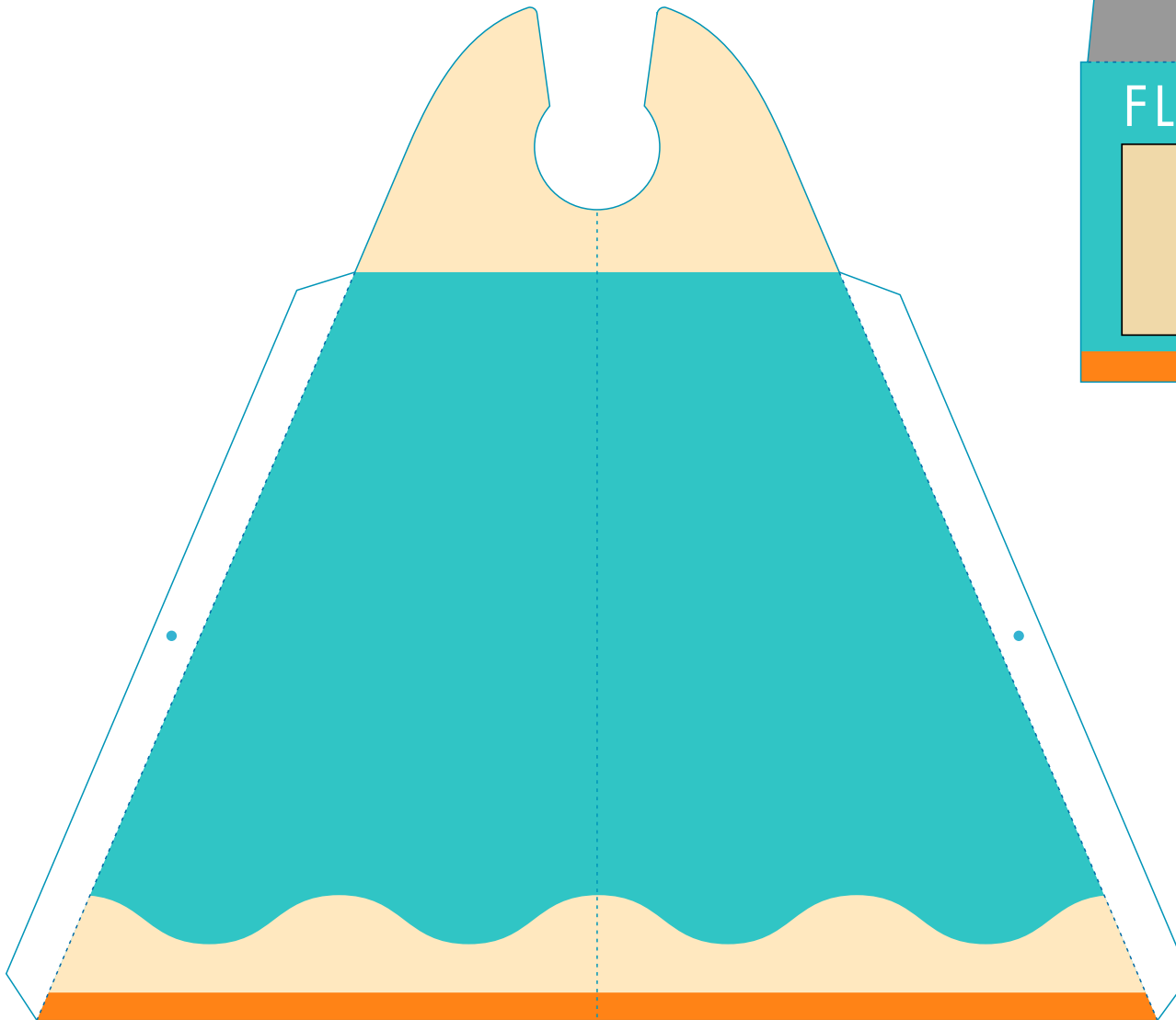
1-1



1-5



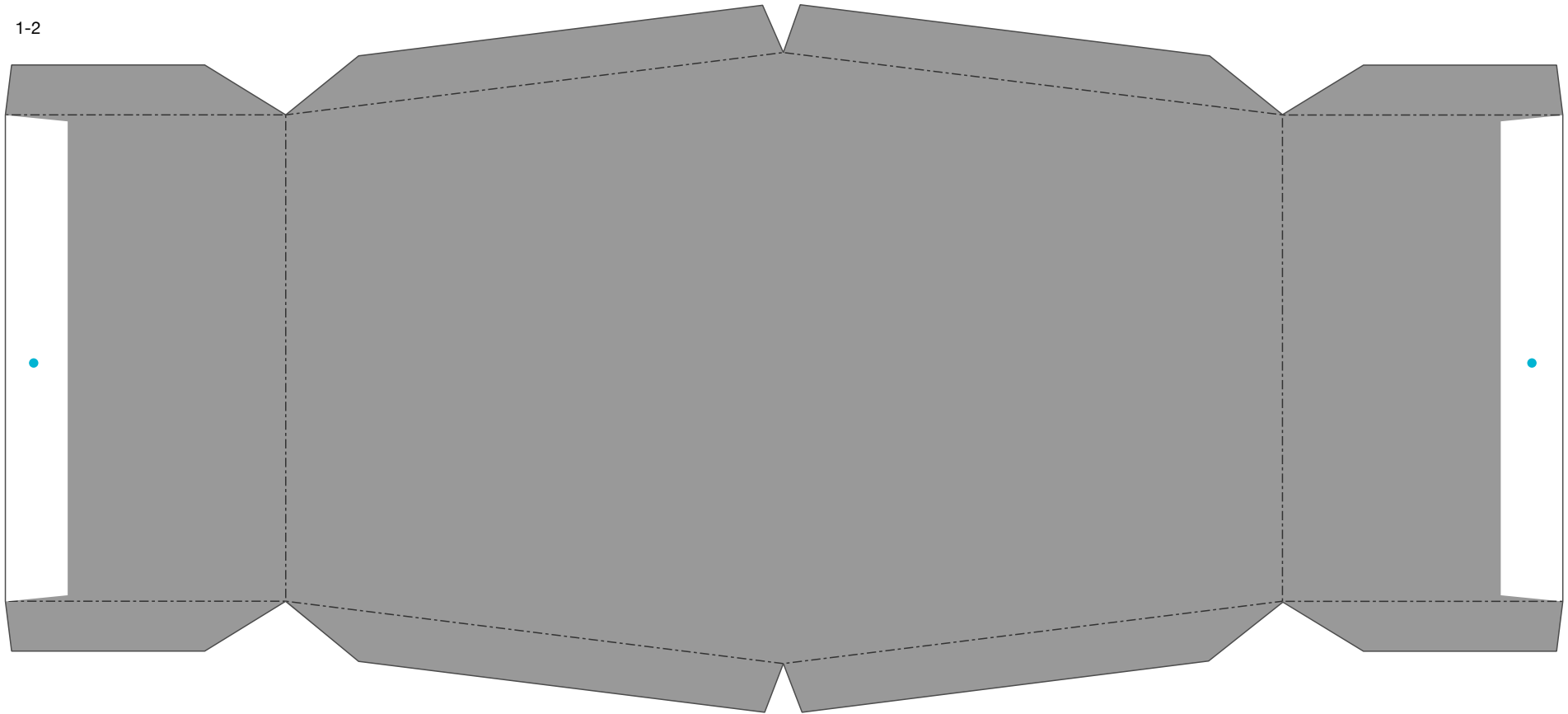
1-1



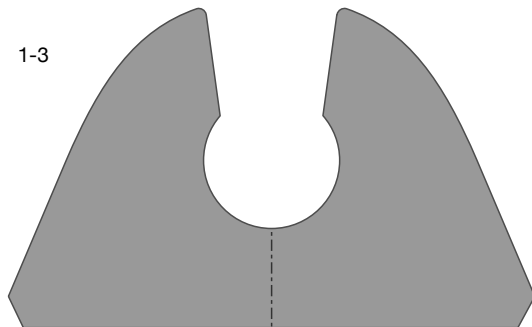
1-5



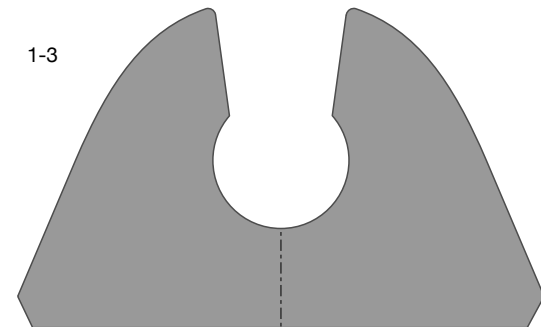
1-2



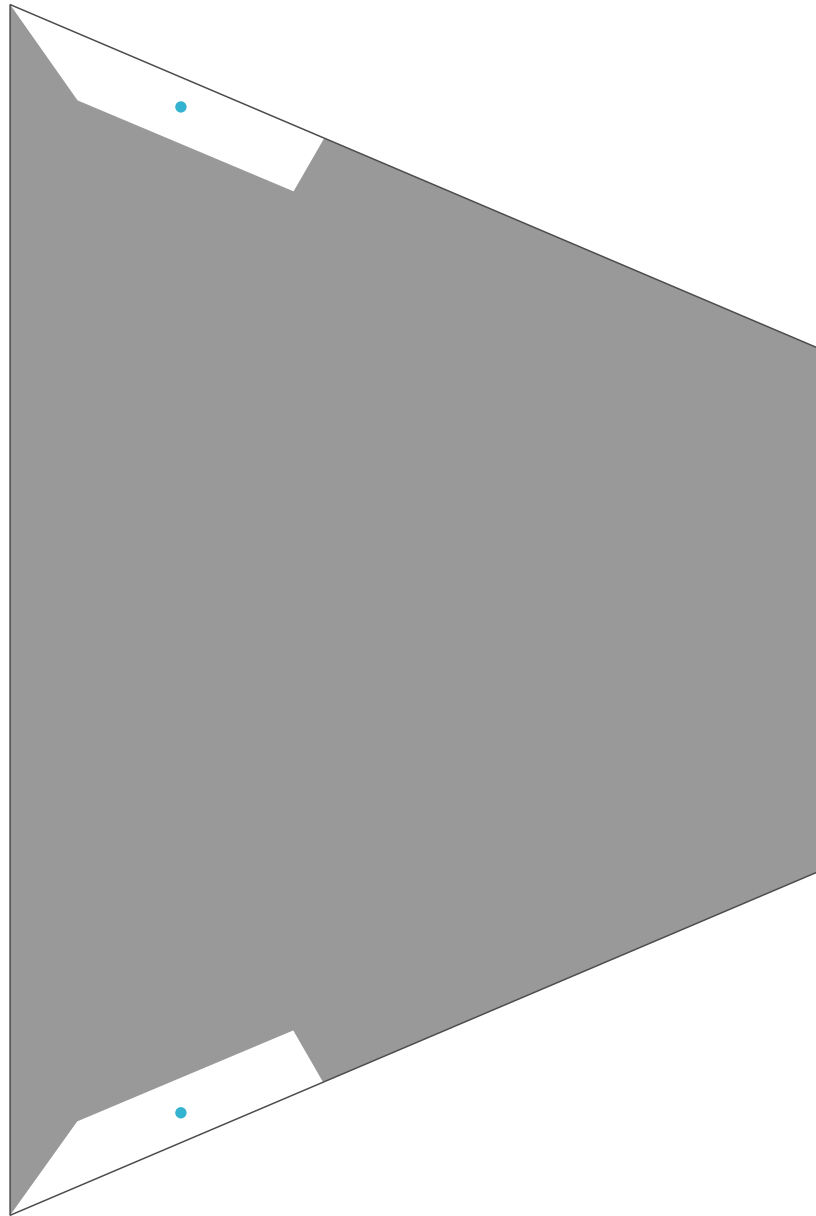
1-3



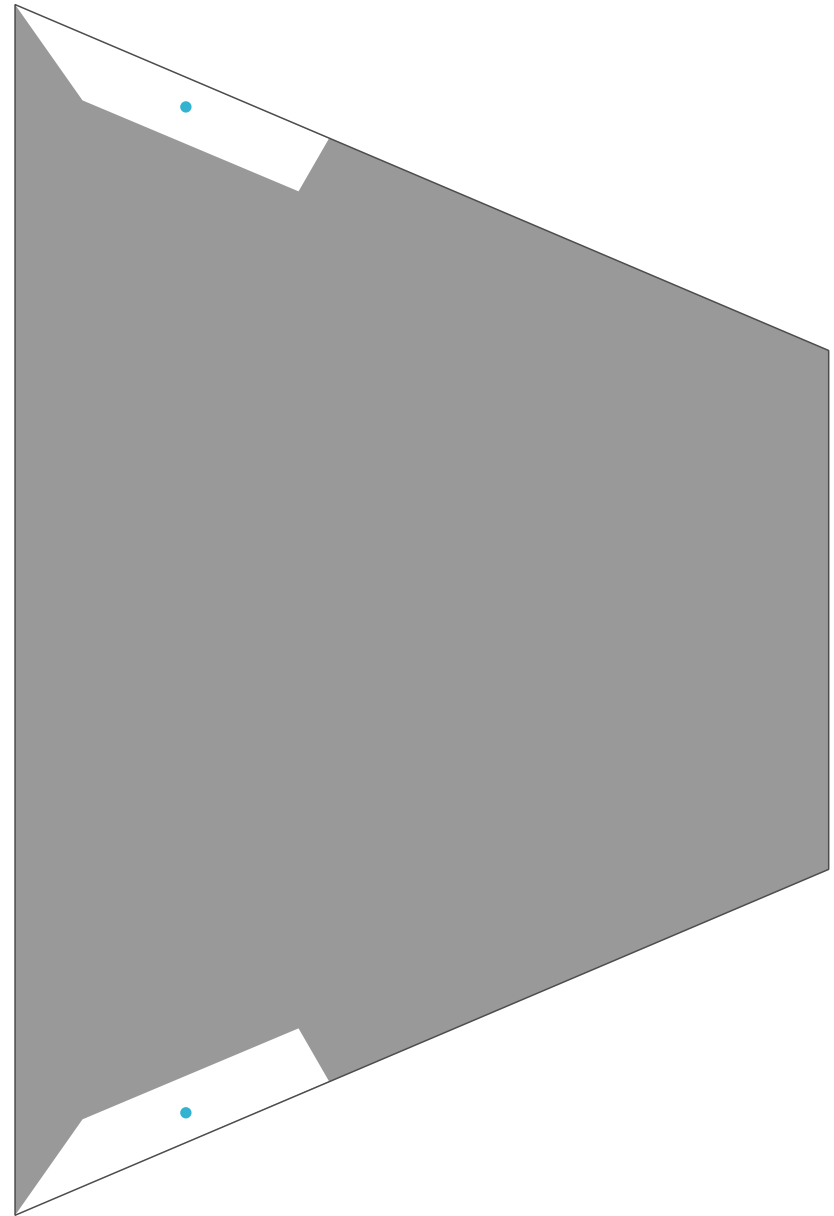
1-3



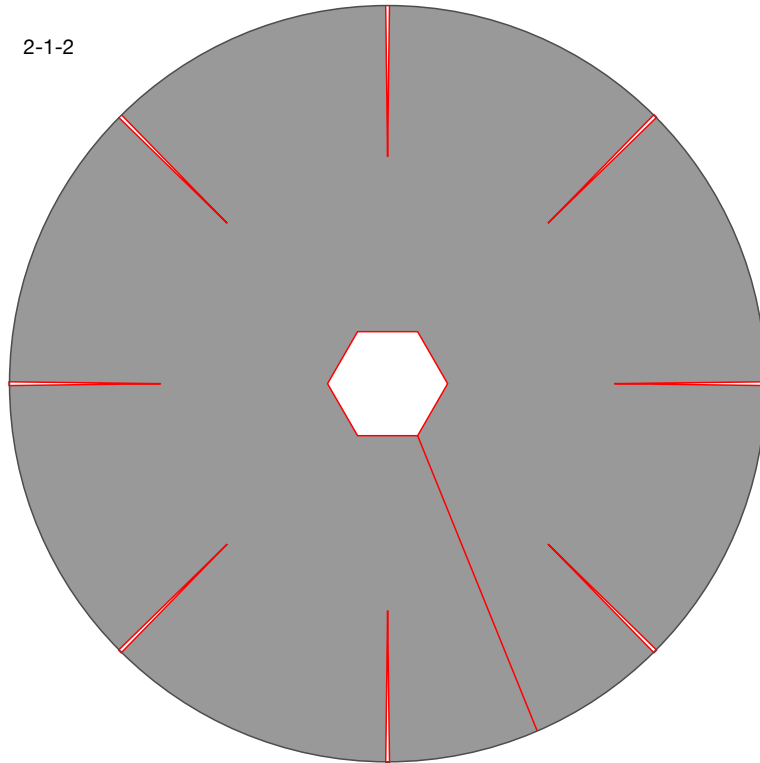
1-4



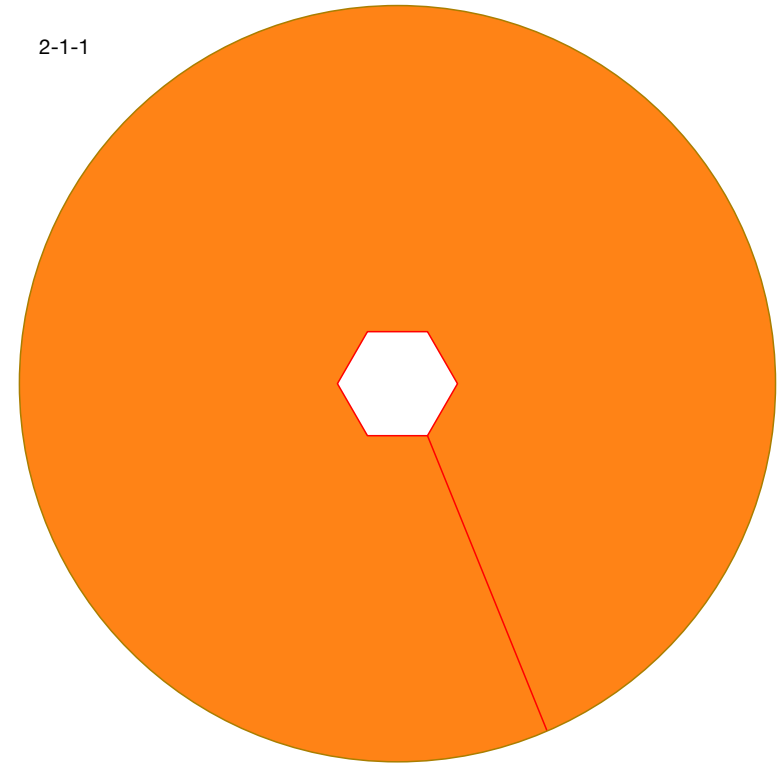
1-4



2-1-2



2-1-1



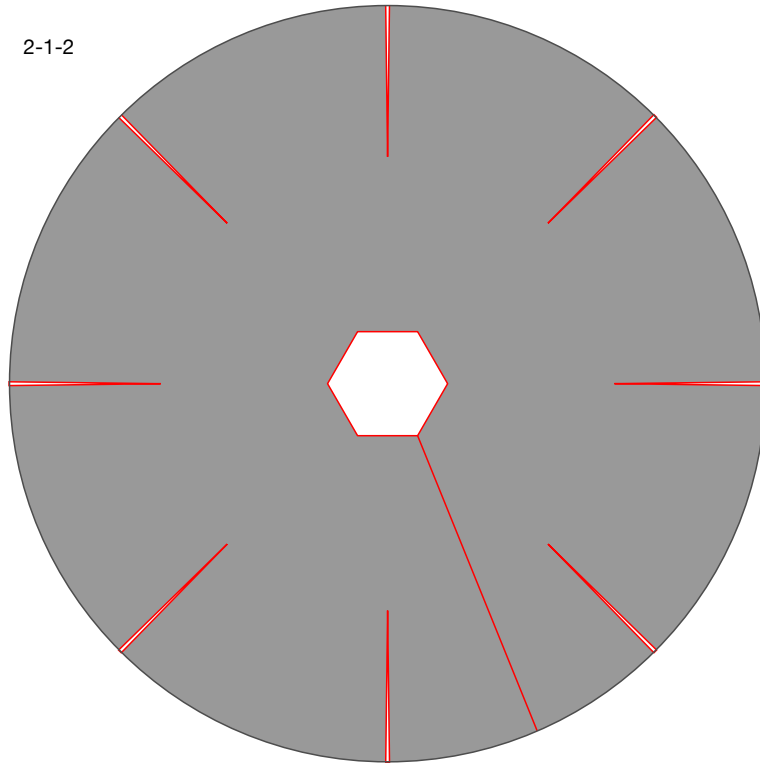
2-6



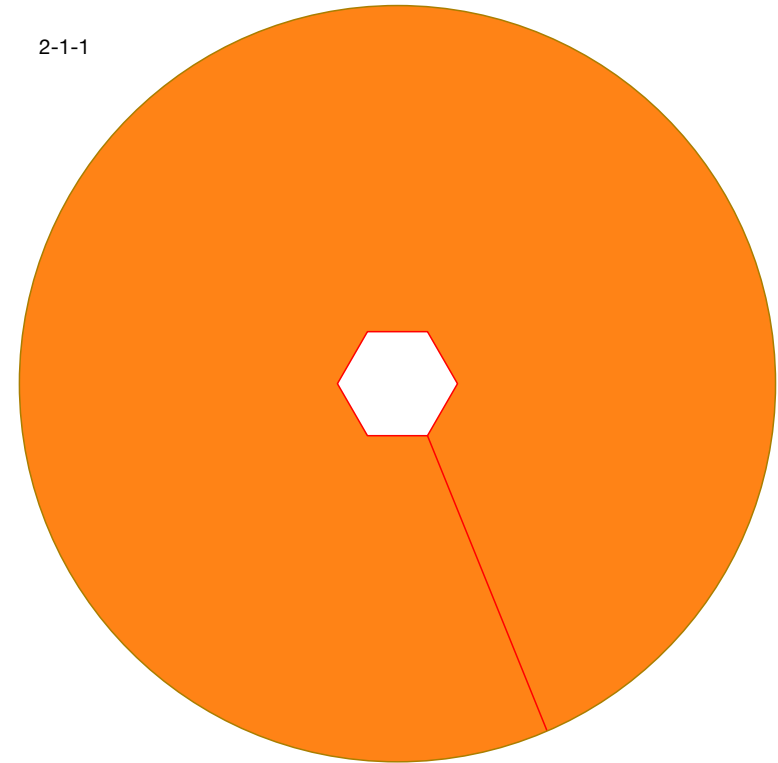
2-5



2-1-2



2-1-1



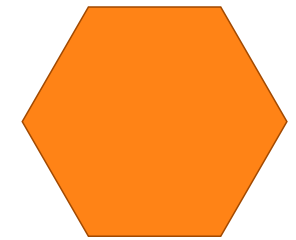
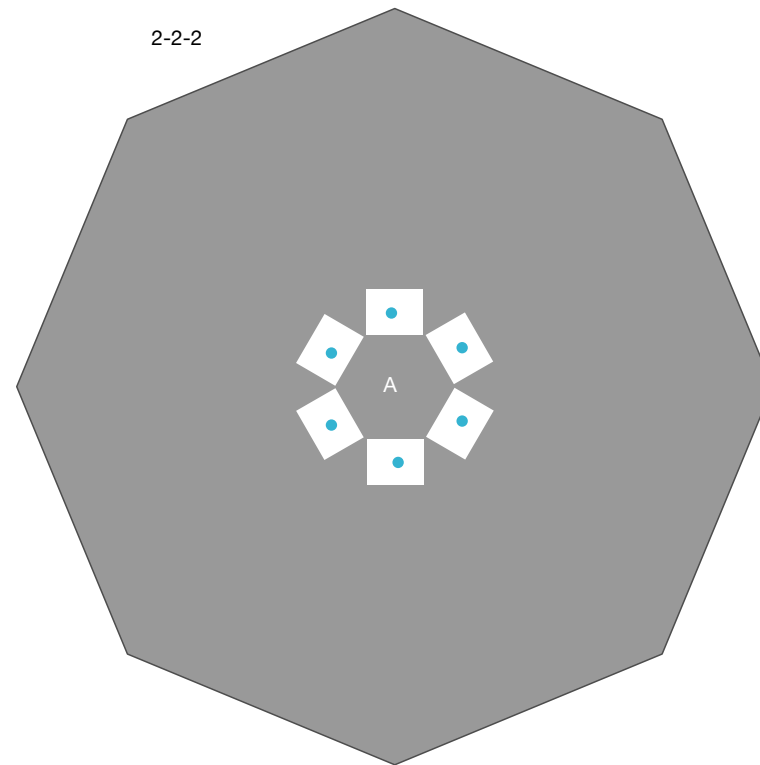
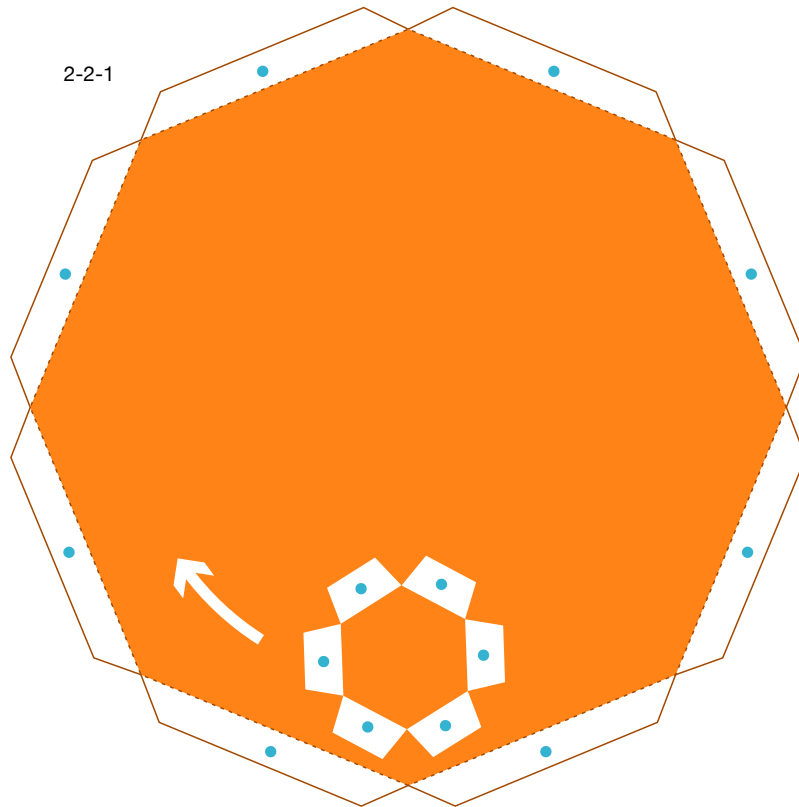
2-5



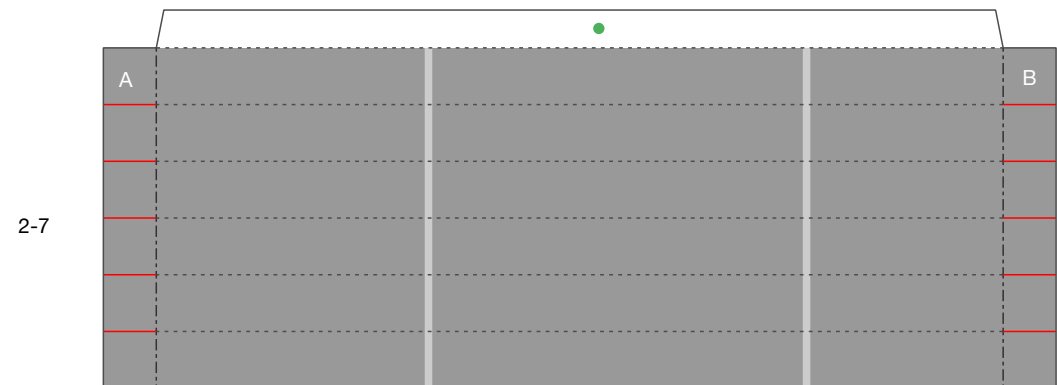
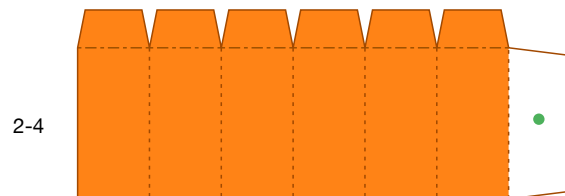
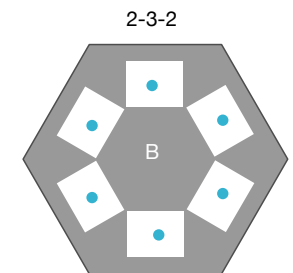
Flip Animation: Pattern

Canon ® is a registered trademark of Canon Inc. © Canon Inc. © Takako Takahashi

Canon



2-3-1

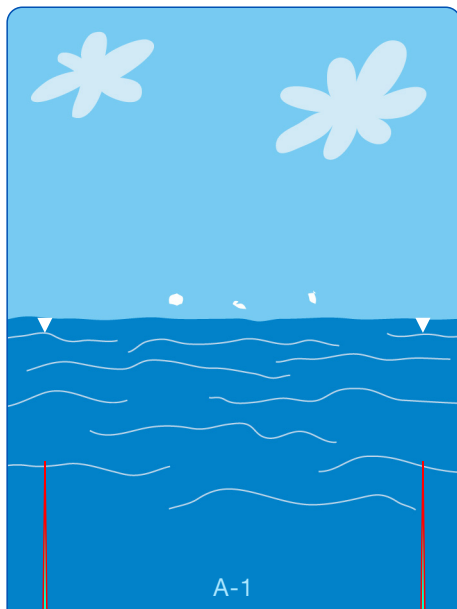


Flip Animation: Pattern

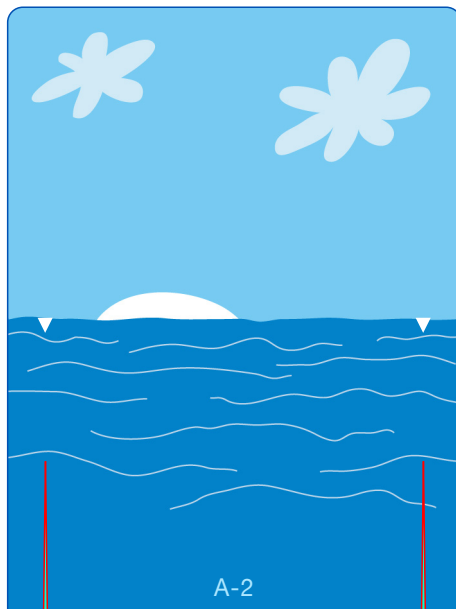
Canon® is a registered trademark of Canon Inc. © Canon Inc. © Takako Takahashi

Canon

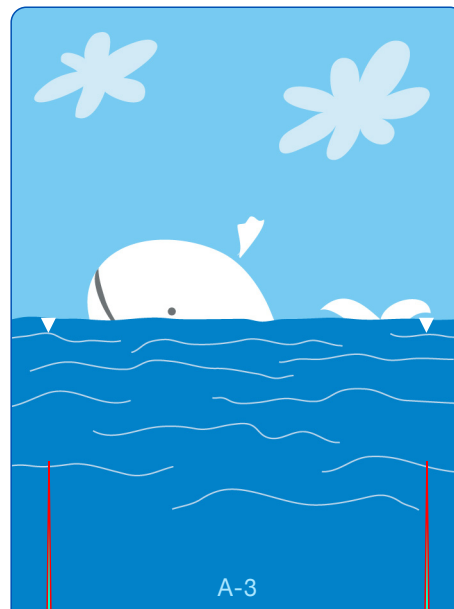
A-1



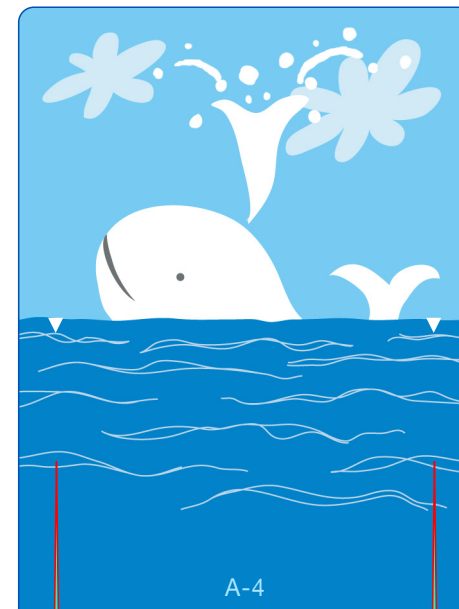
A-2



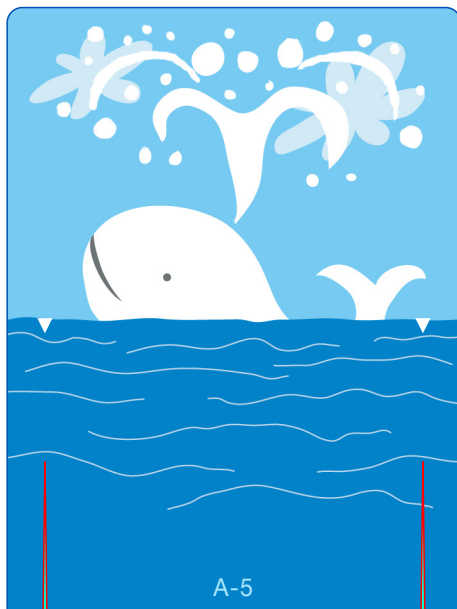
A-3



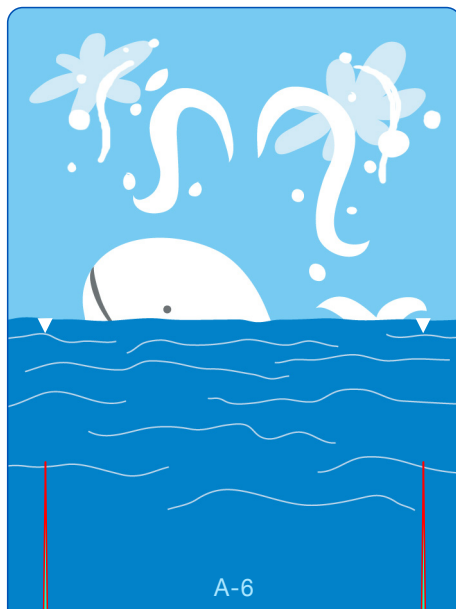
A-4



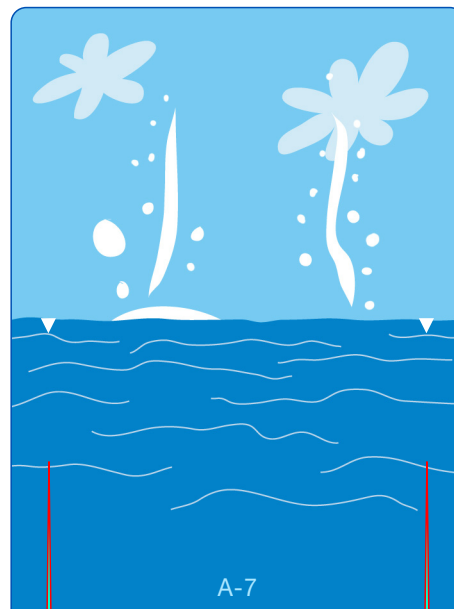
A-5



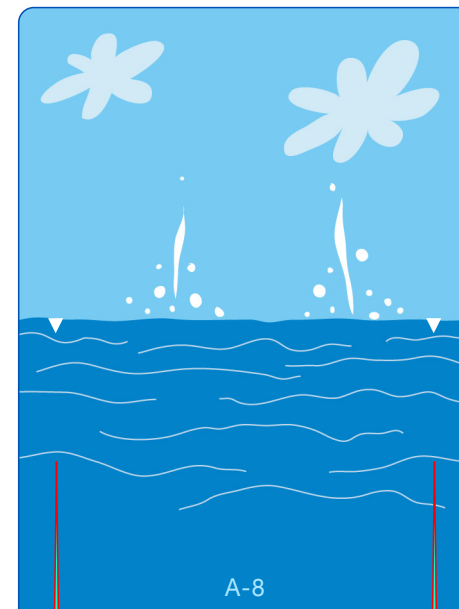
A-6



A-7



A-8

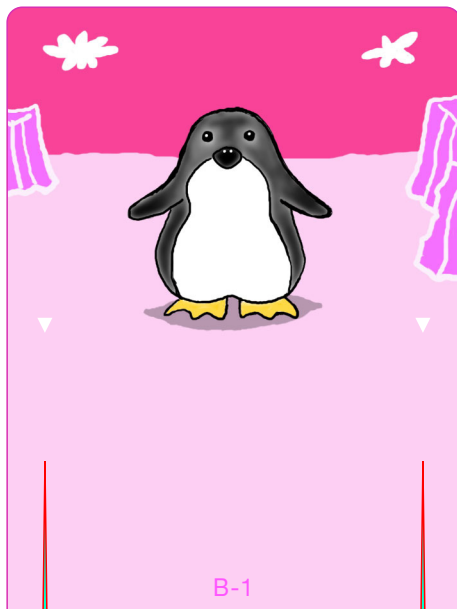


Flip Animation: Pattern

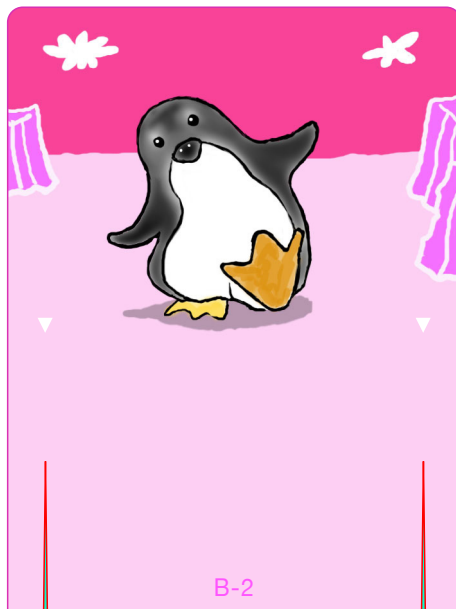
Canon ® is a registered trademark of Canon Inc. © Canon Inc. © Takako Takahashi

Canon

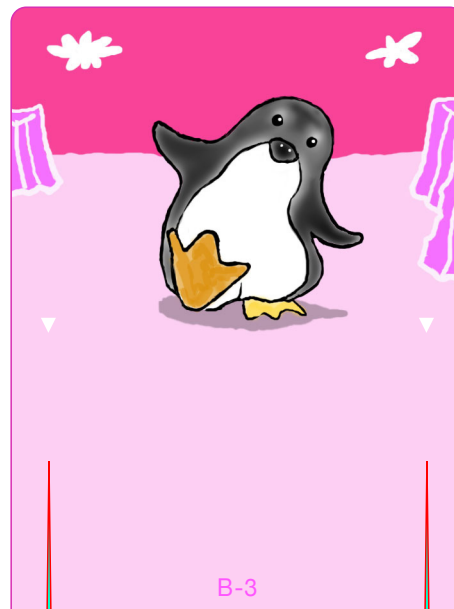
B-1



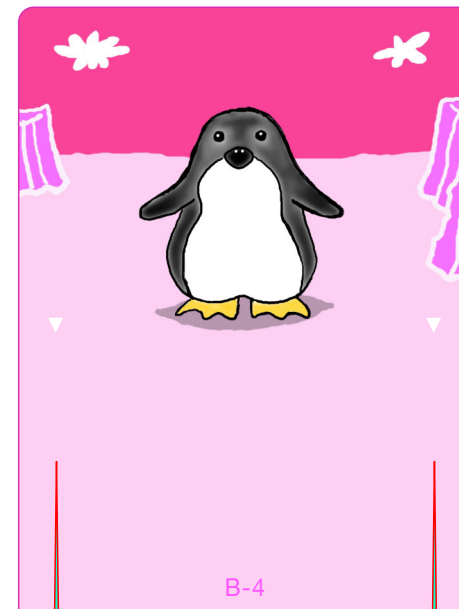
B-2



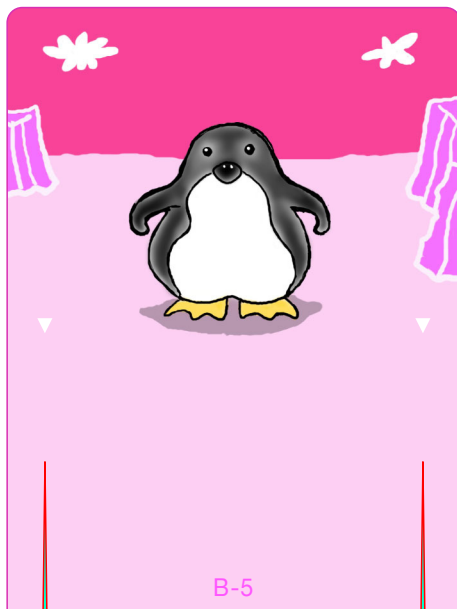
B-3



B-4



B-5



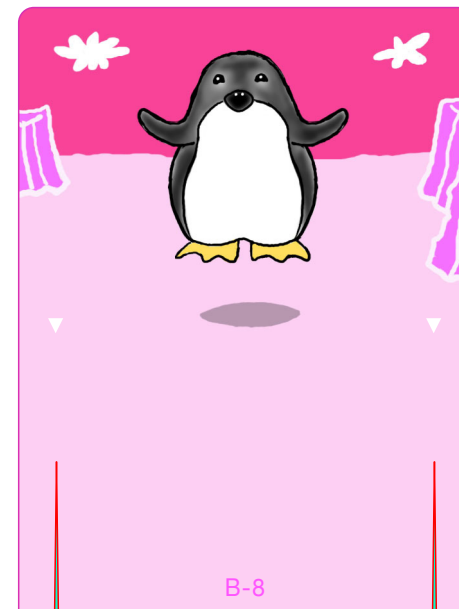
B-6



B-7



B-8

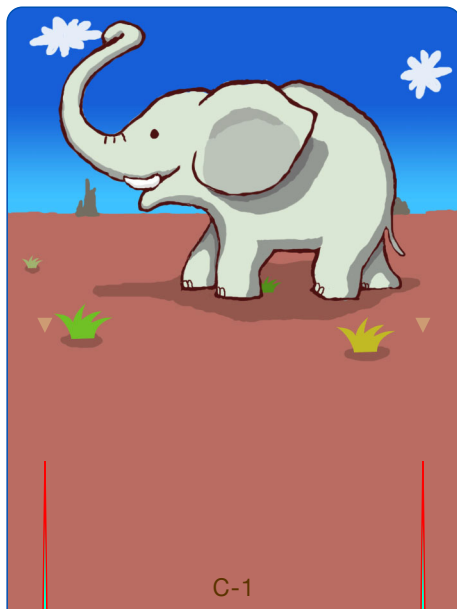


Flip Animation: Pattern

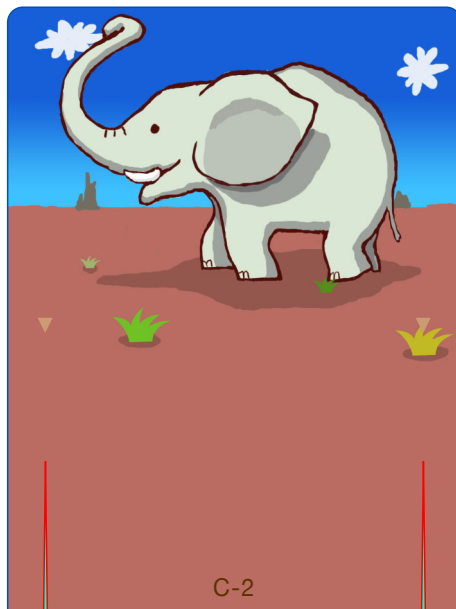
Canon ® is a registered trademark of Canon Inc. © Canon Inc. © Takako Takahashi

Canon

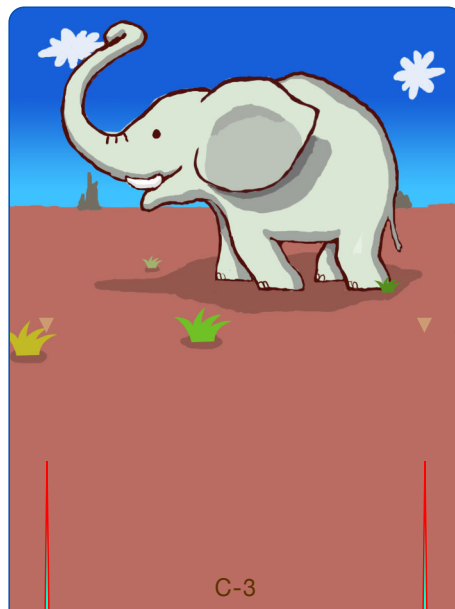
C-1



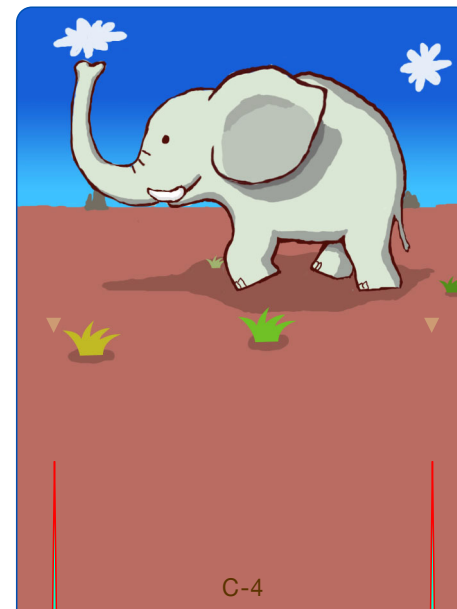
C-2



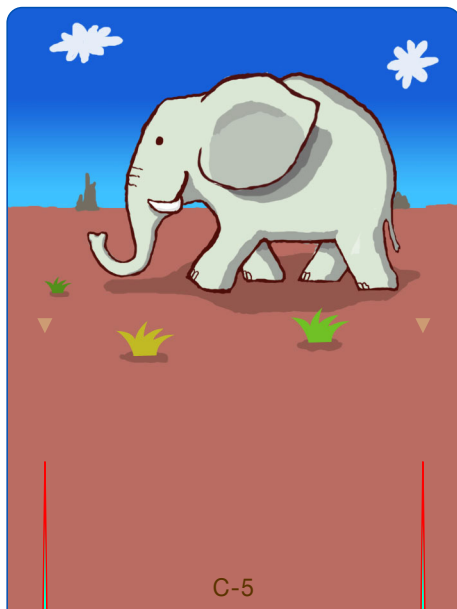
C-3



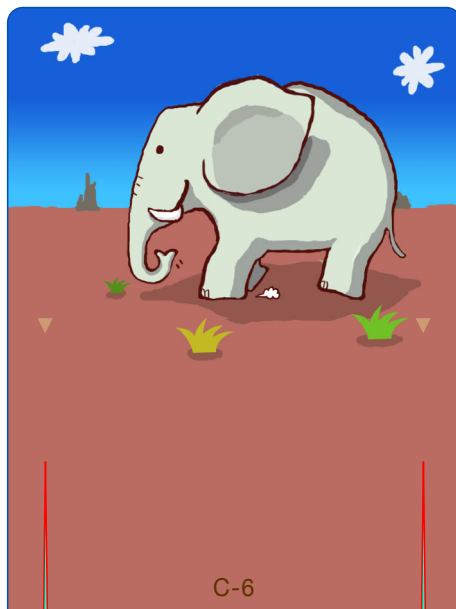
C-4



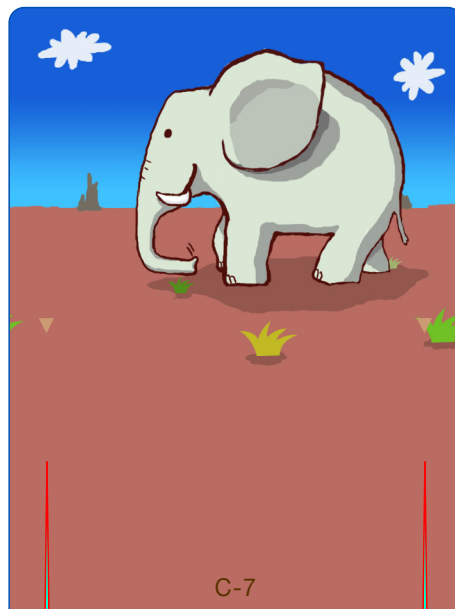
C-5



C-6



C-7



C-8

