

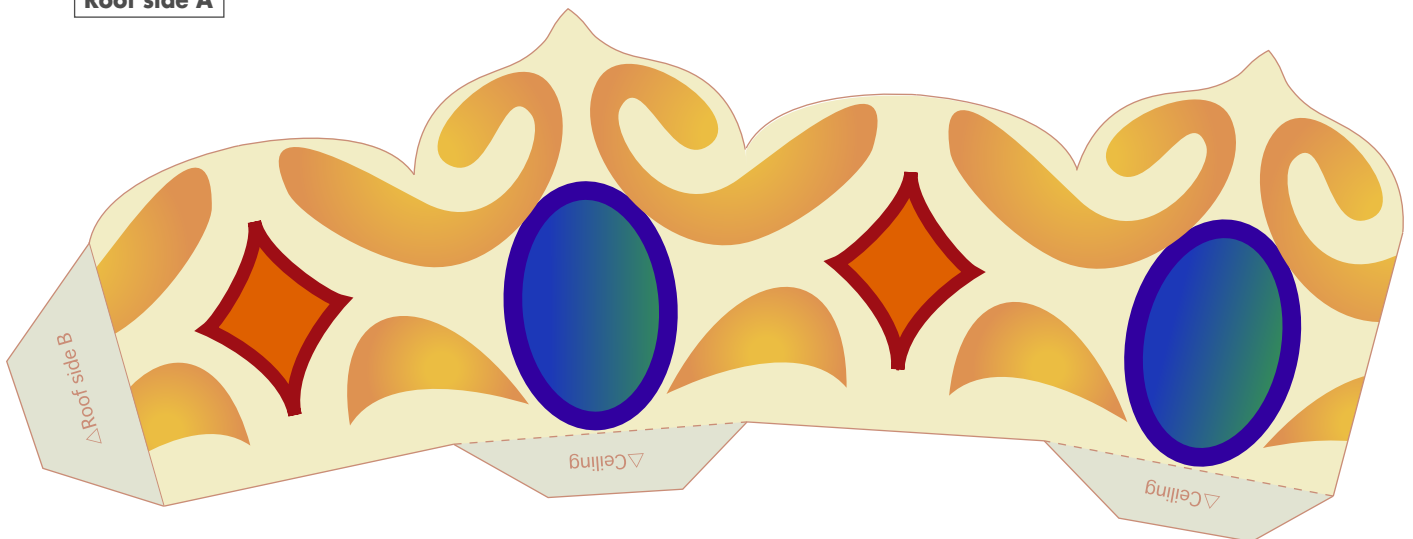
Carousel

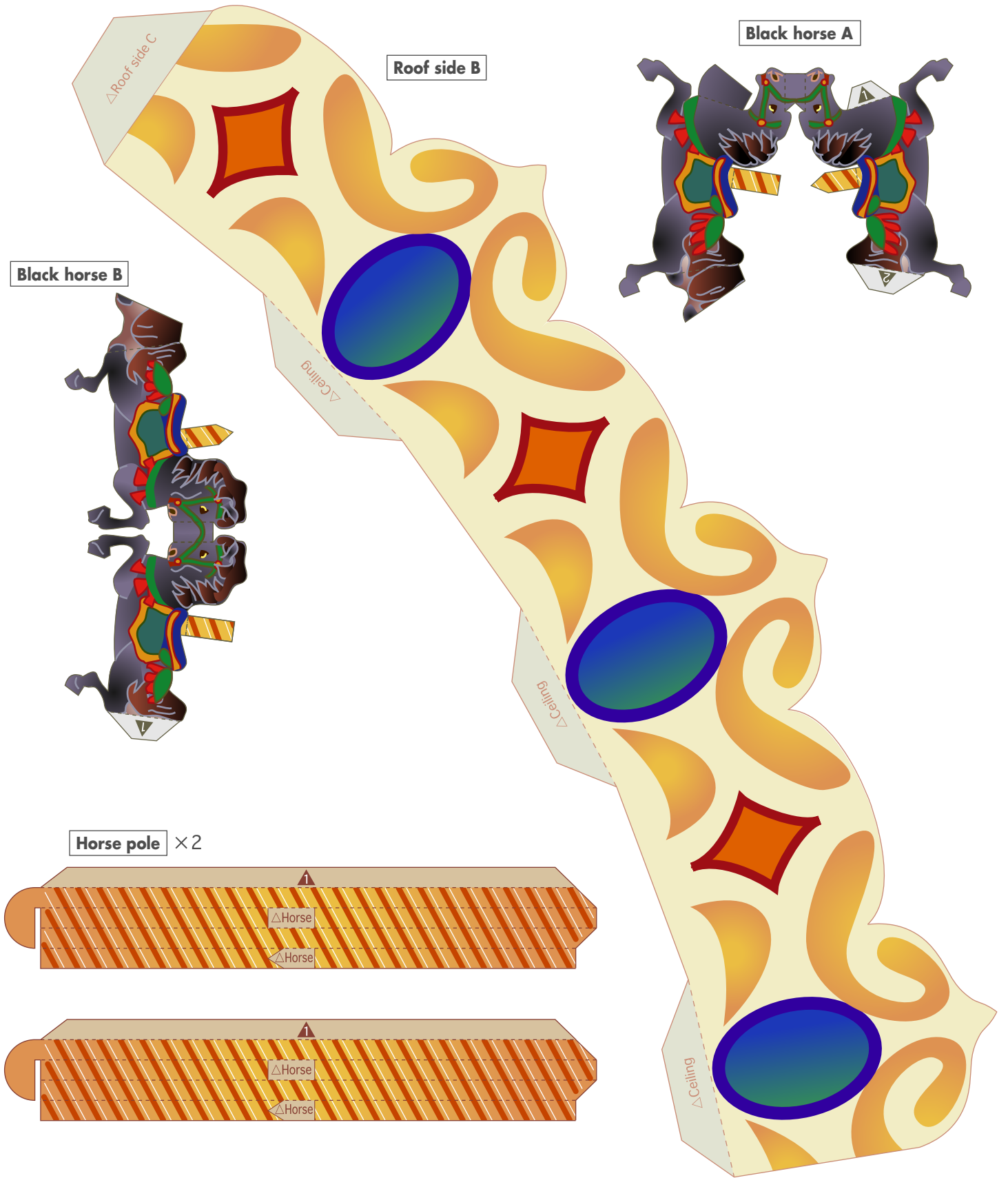
A carousel, or merry-go-round, is a type of ride often seen at amusement parks. It features a revolving platform with seats on which users can sit. The seats are shaped like horses and they rise and fall as the platform rotates, simulating horse riding. The first carousel, powered by a steam engine, was made in France circa 1860, and its popularity had spread through Europe and to the United States by the 1870s.

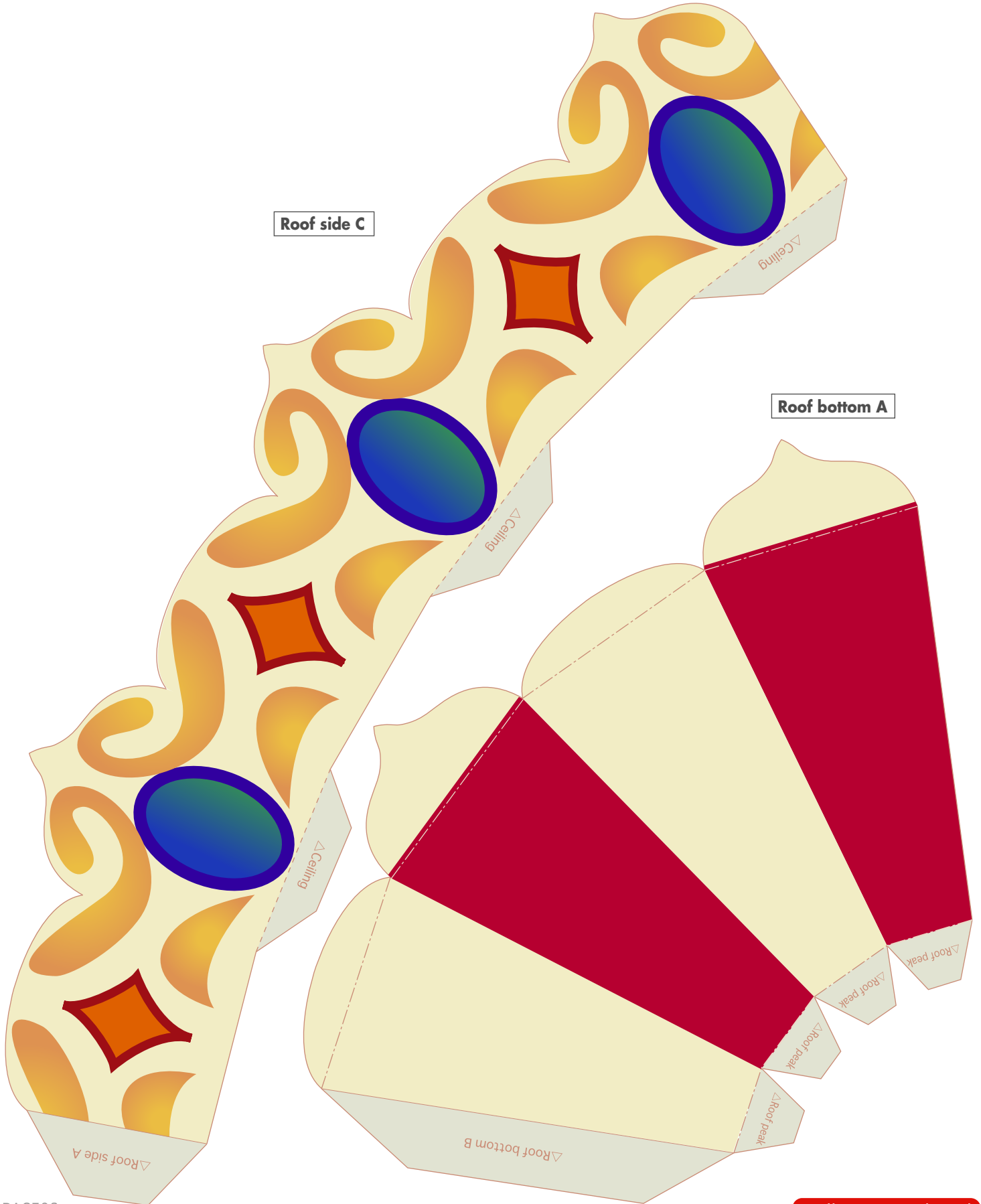
The horses on this papercraft carousel really move up and down when you turn the base. Have fun playing with it, or use it as a decoration!

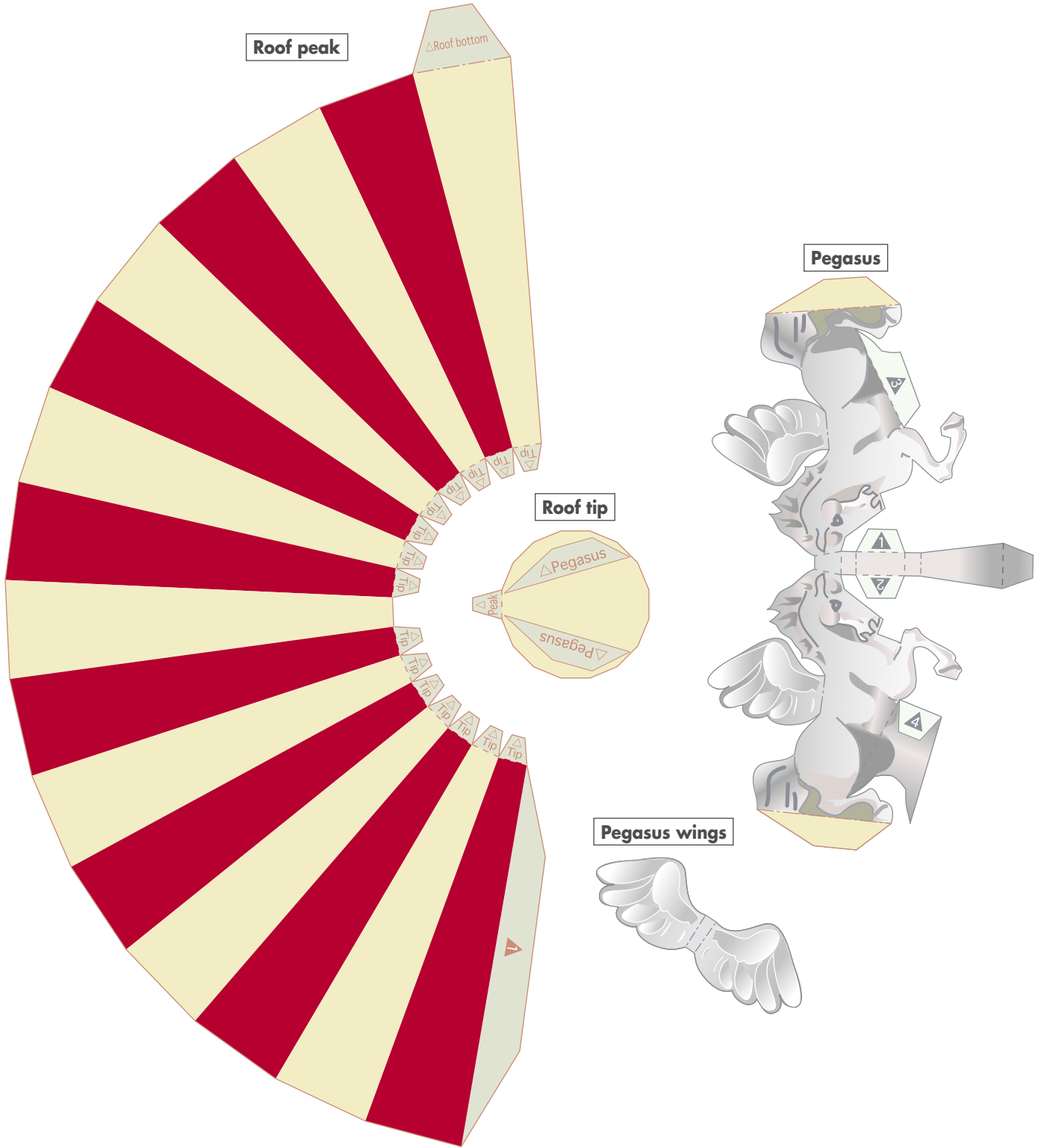


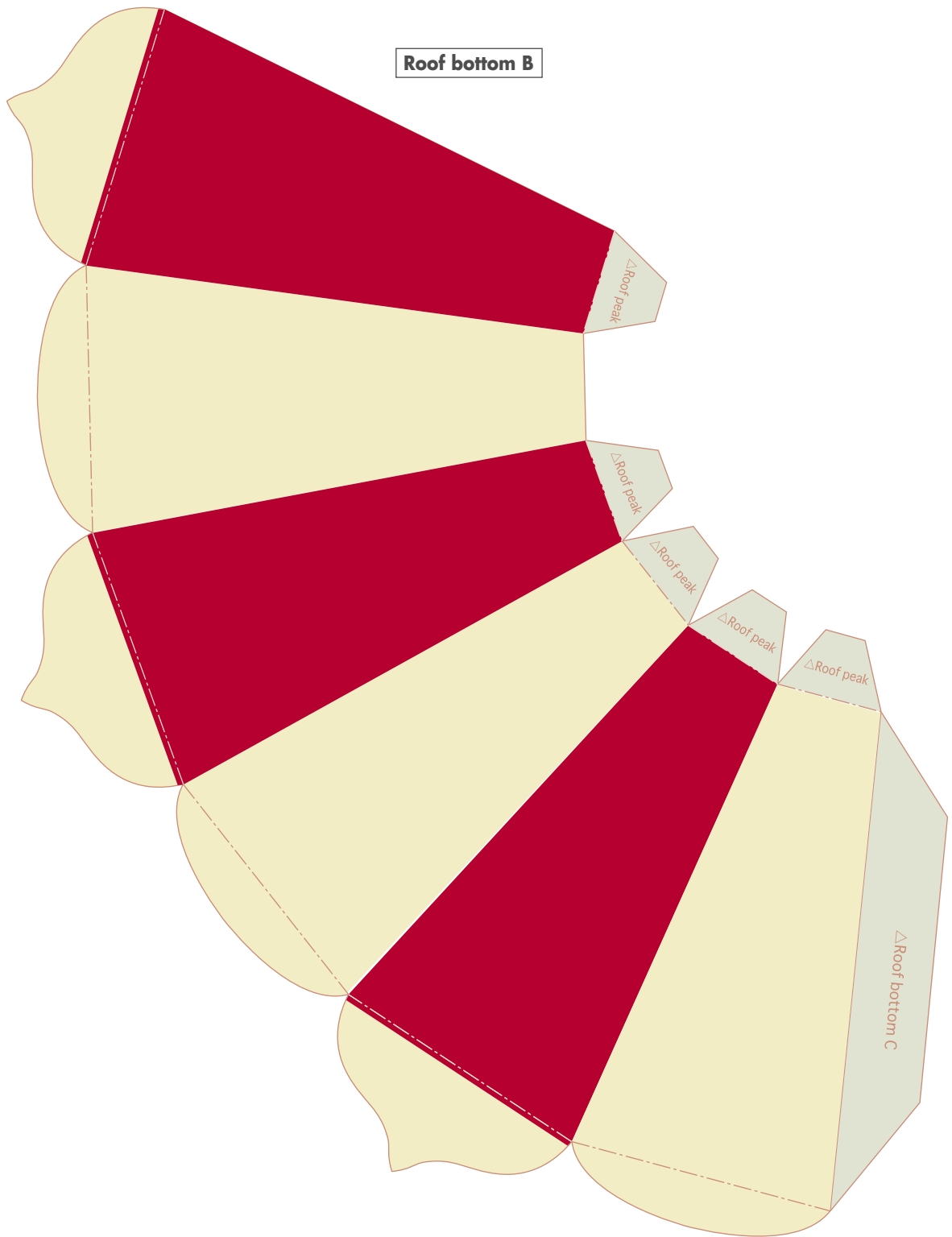
Roof side A

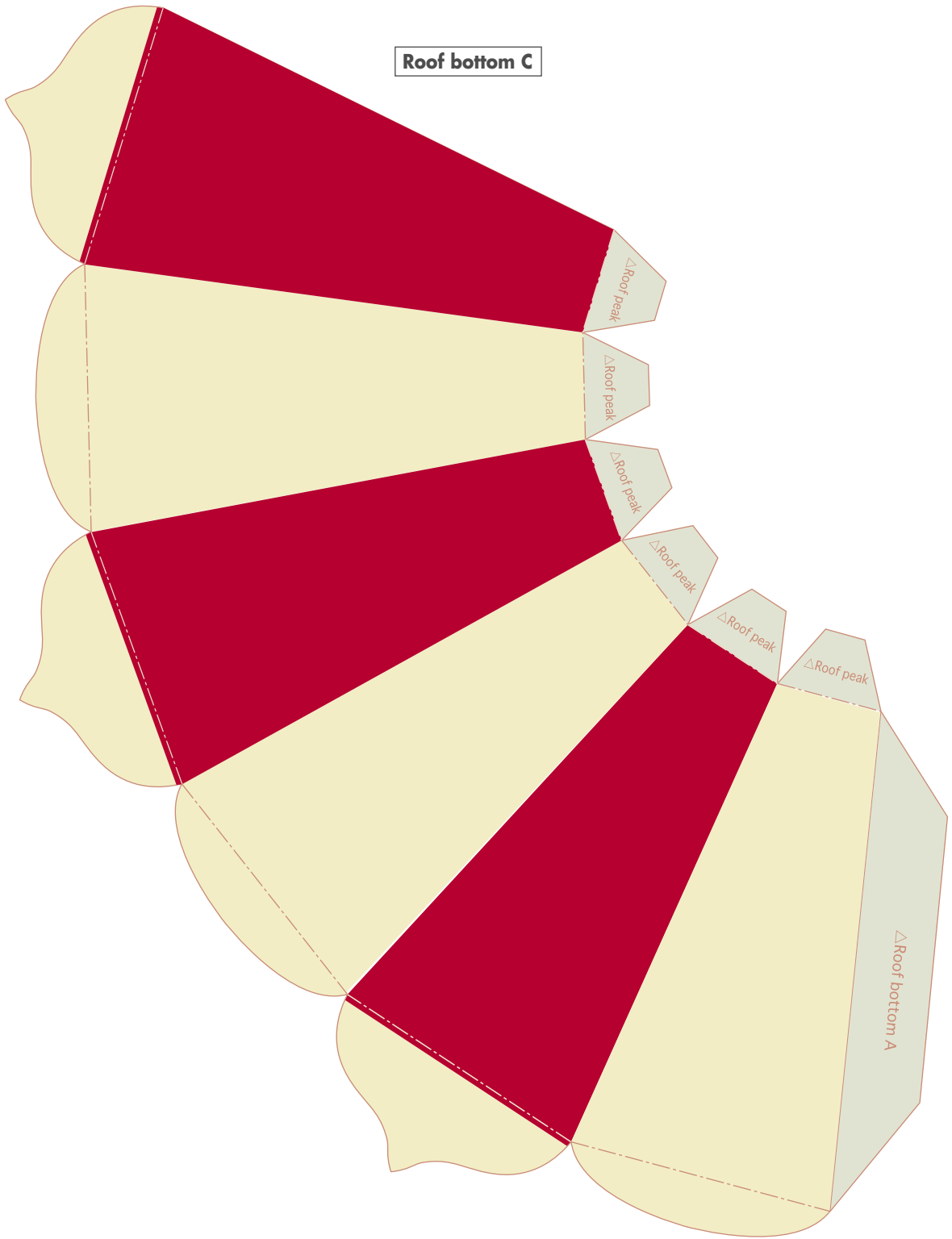








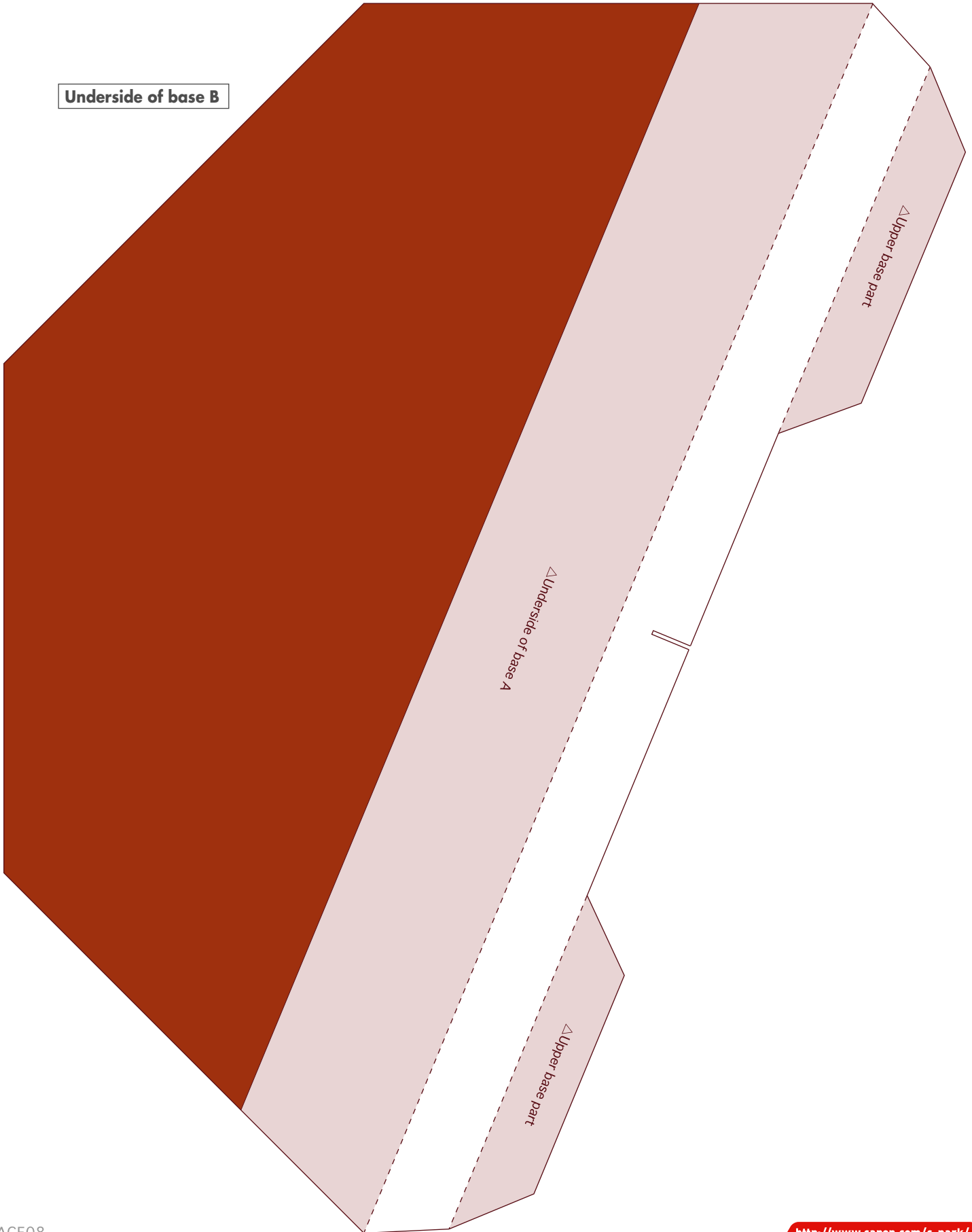


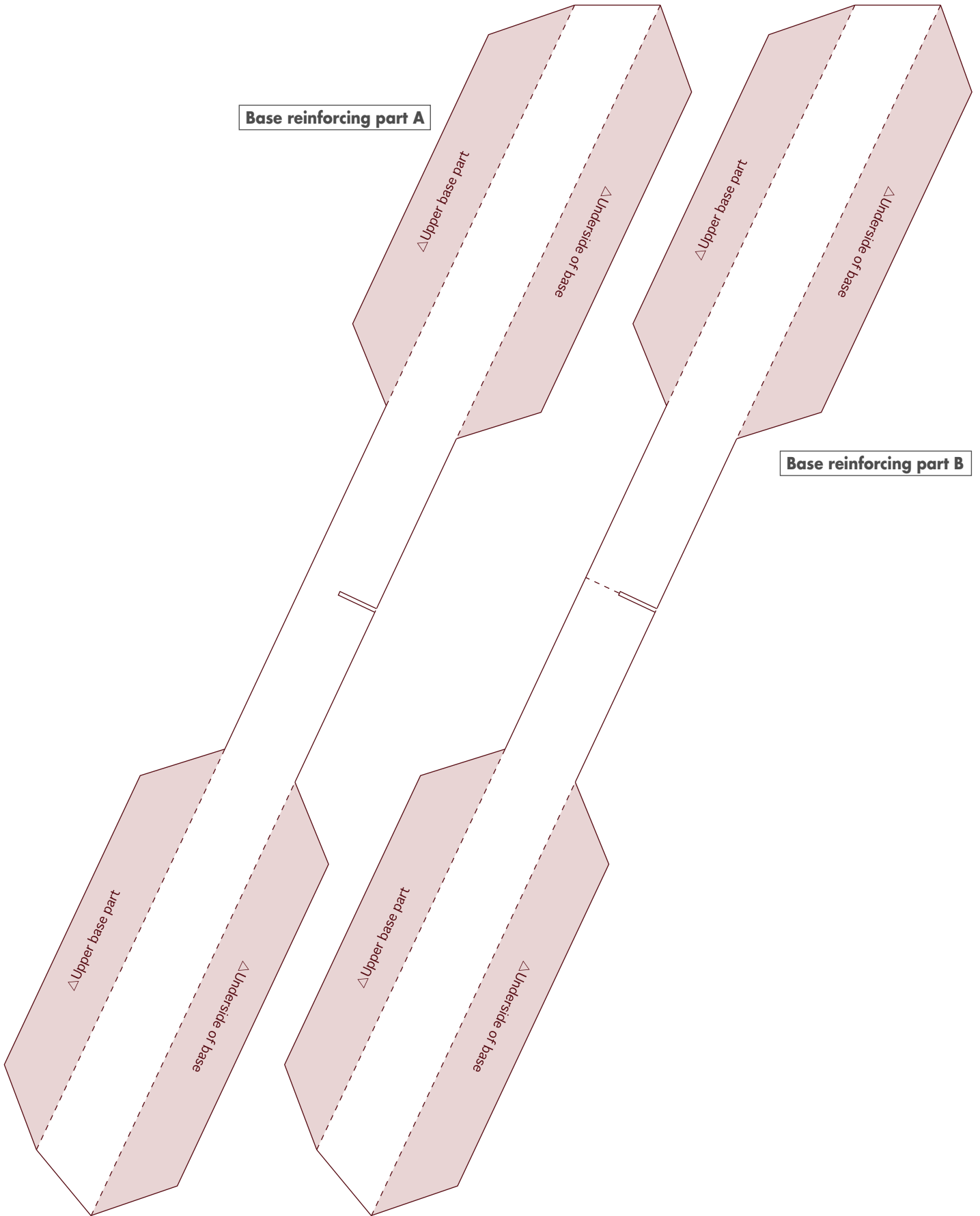


Underside of base A



Underside of base B

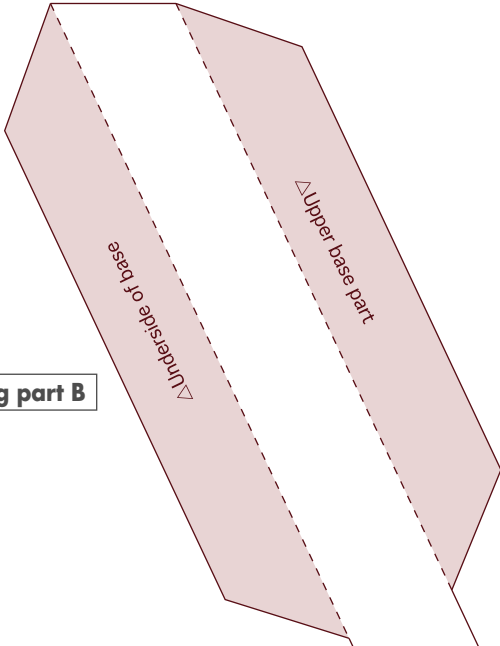




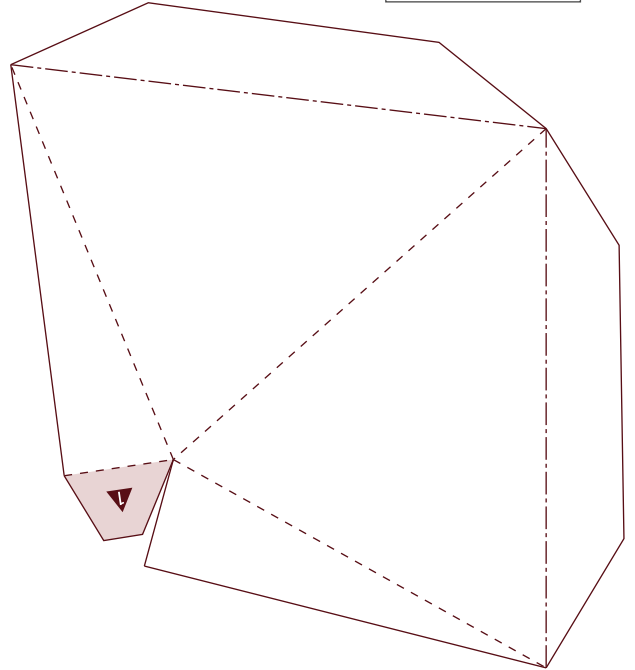
Base reinforcing part A

Base reinforcing part B

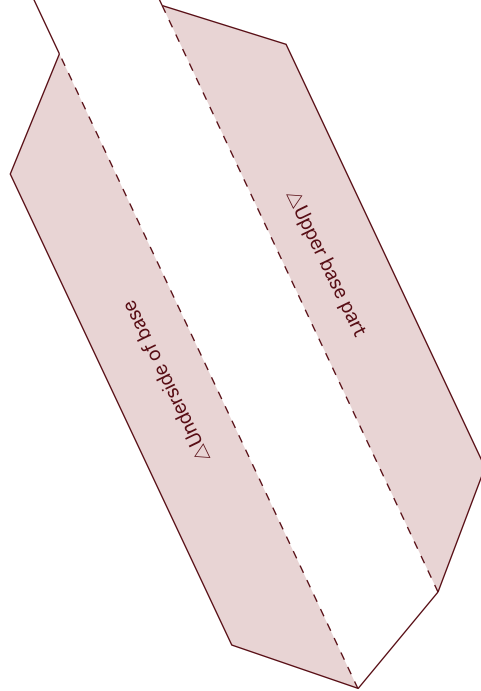
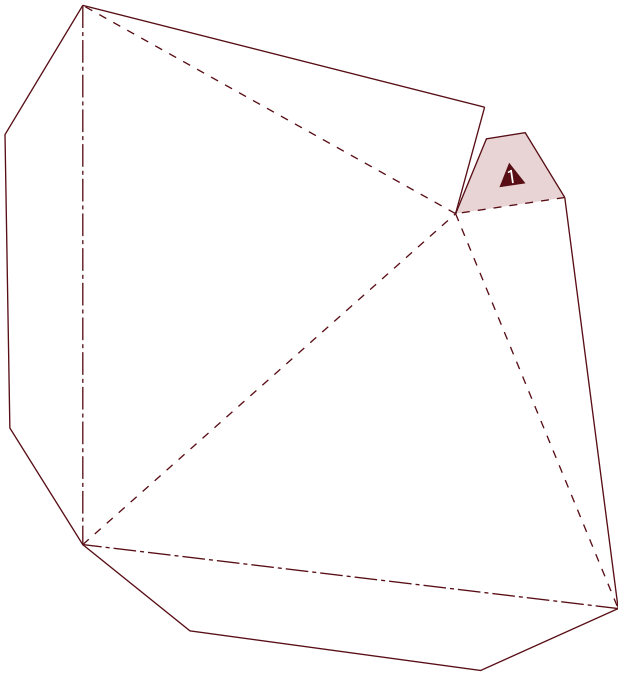
Base reinforcing part B

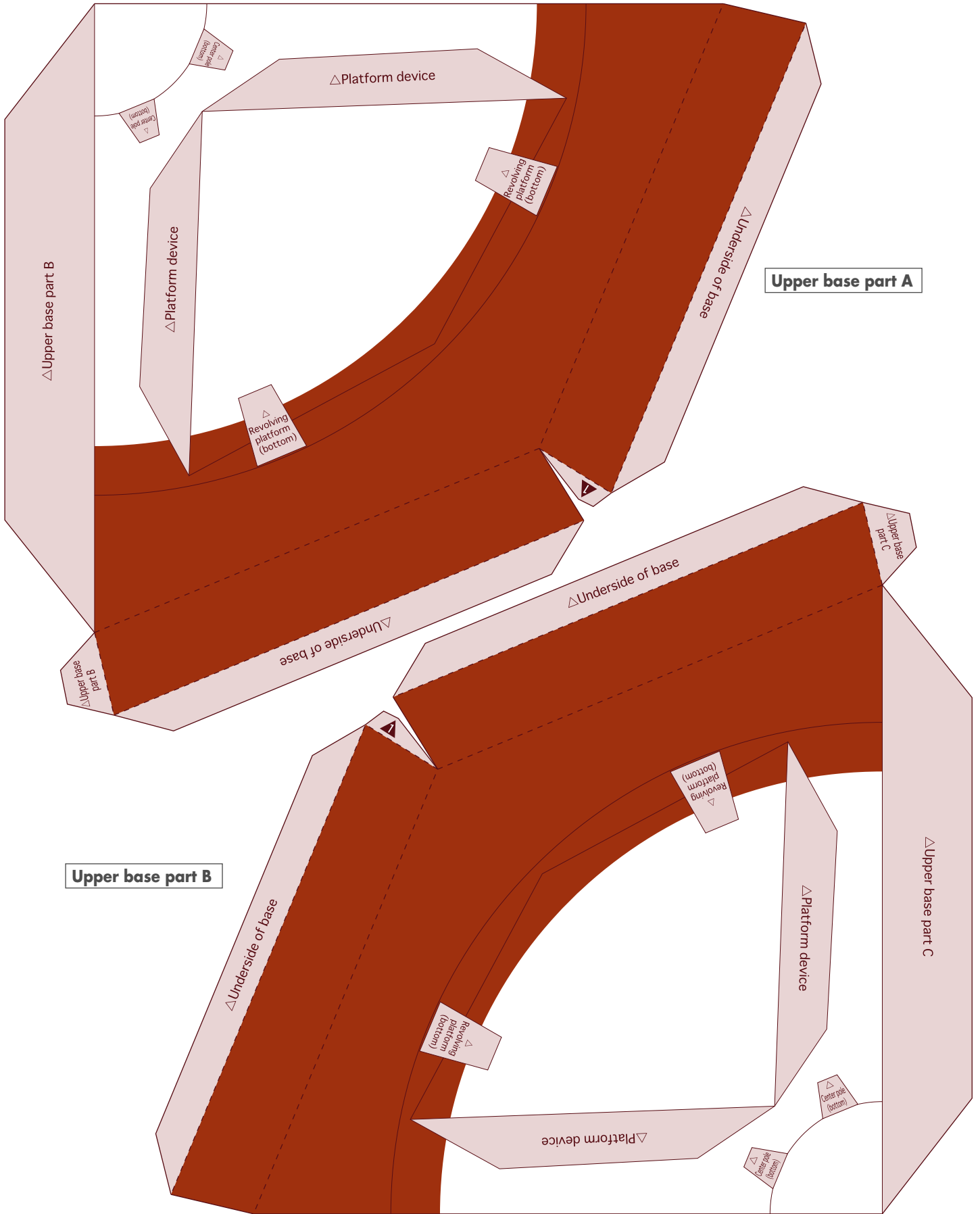


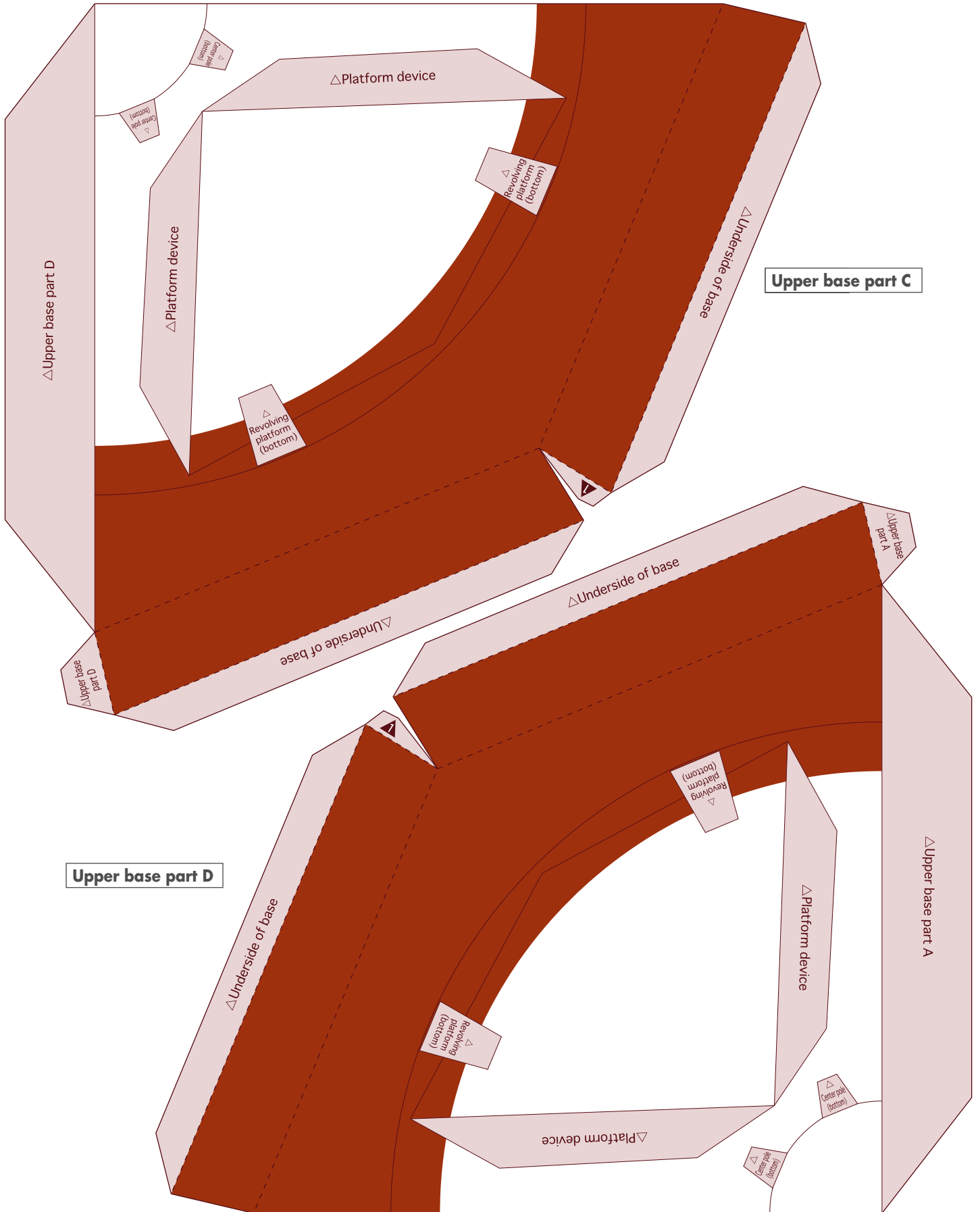
Platform device



Platform device







Upper base part D

Upper base part C



Revolving platform (bottom) A



Revolving platform (bottom) B

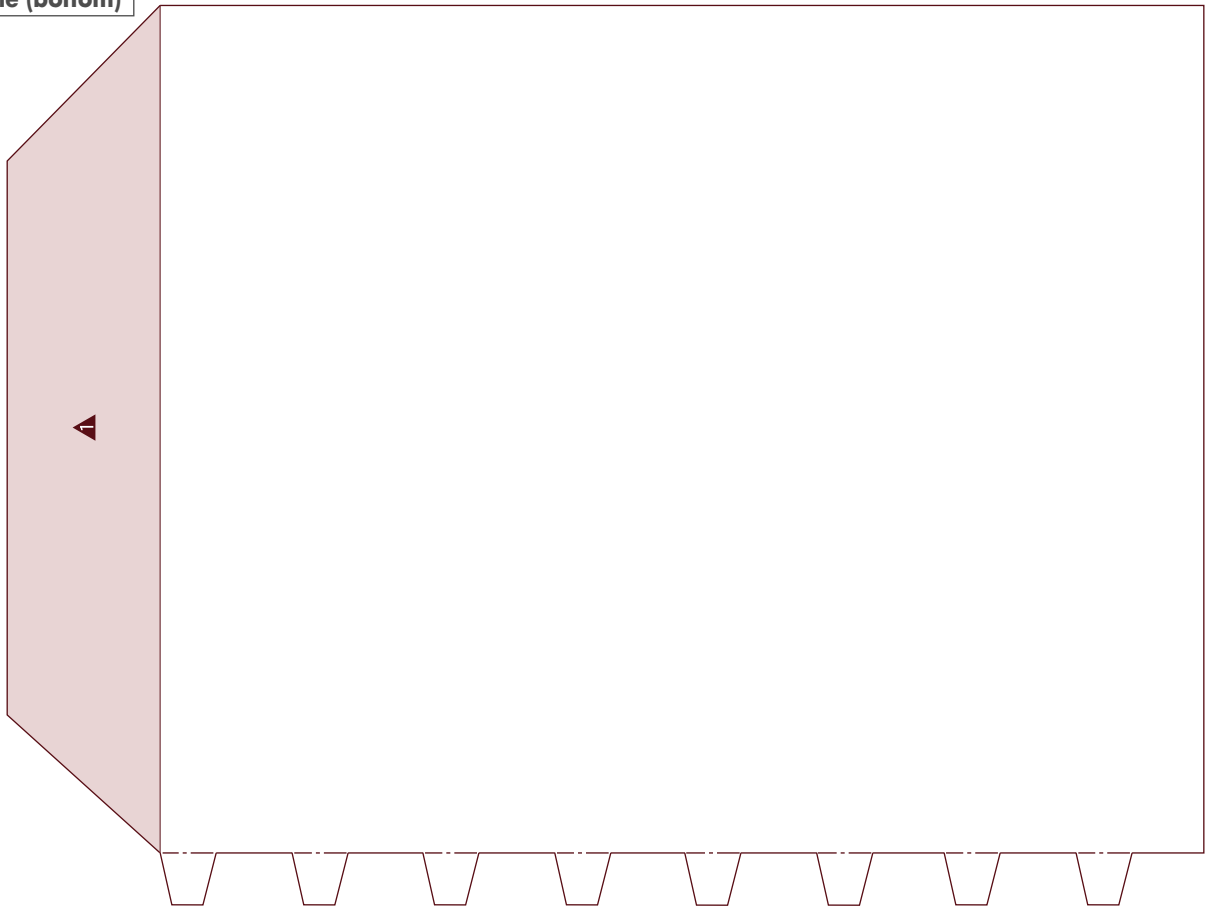


Revolving platform (bottom) C

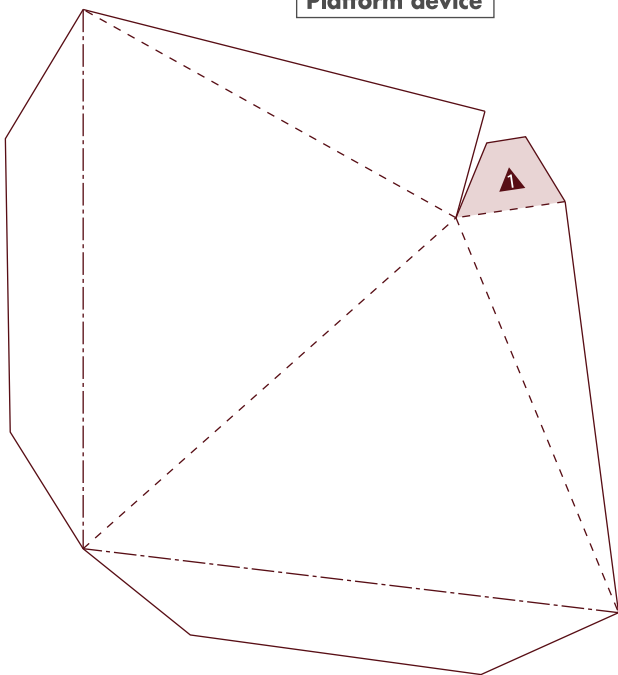


Revolving platform (bottom) D

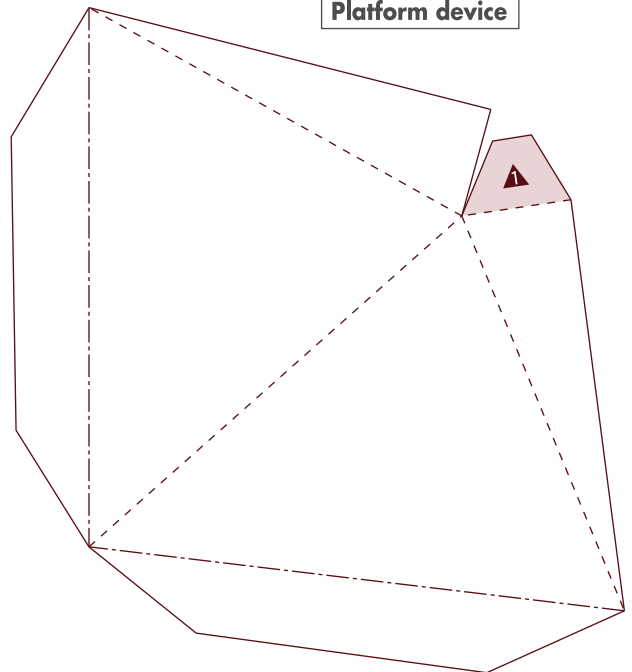
Center pole (bottom)

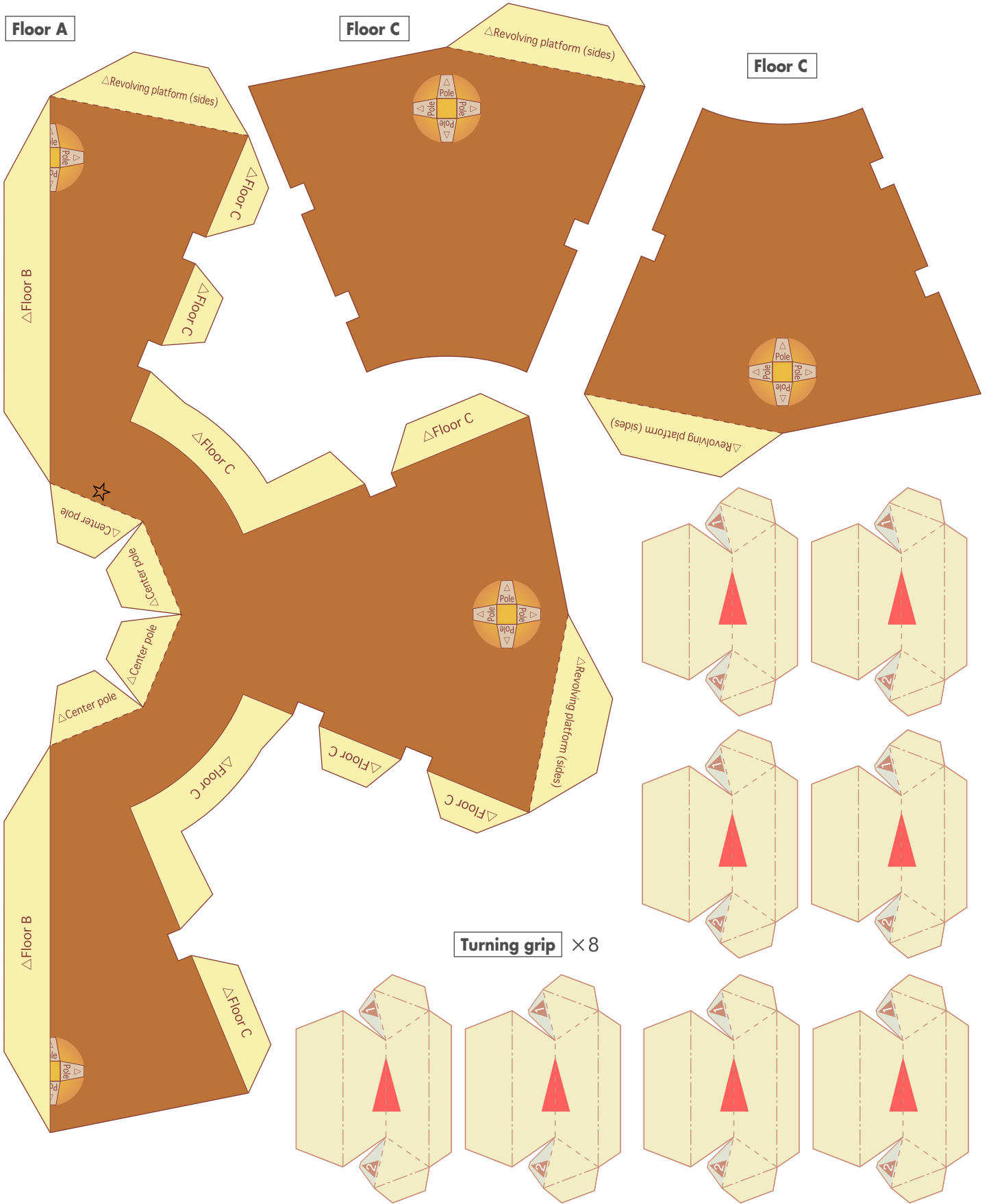


Platform device

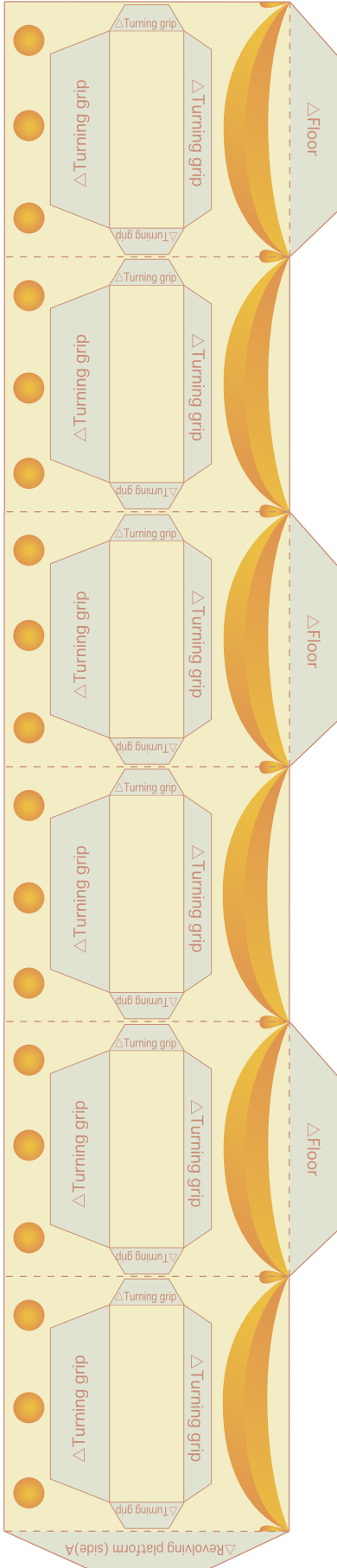


Platform device

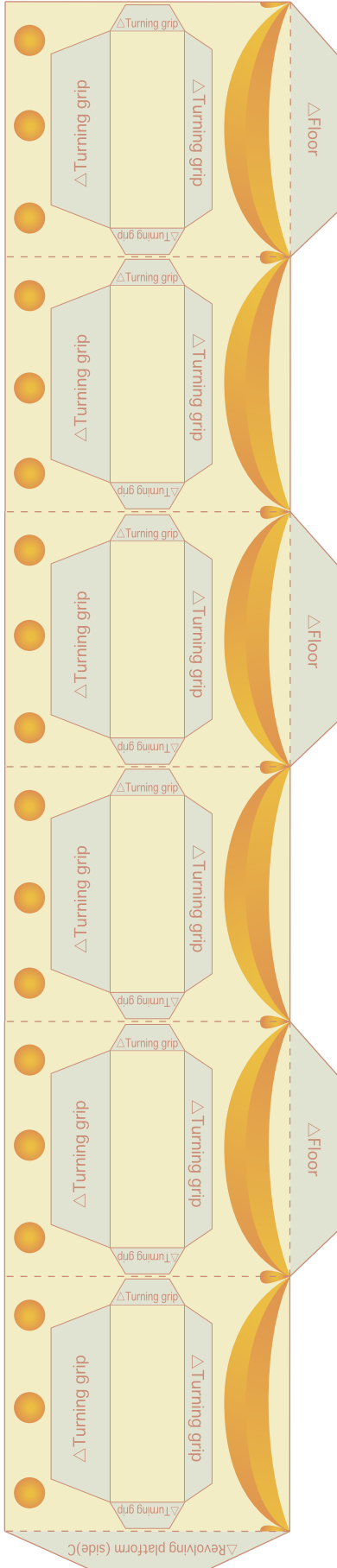




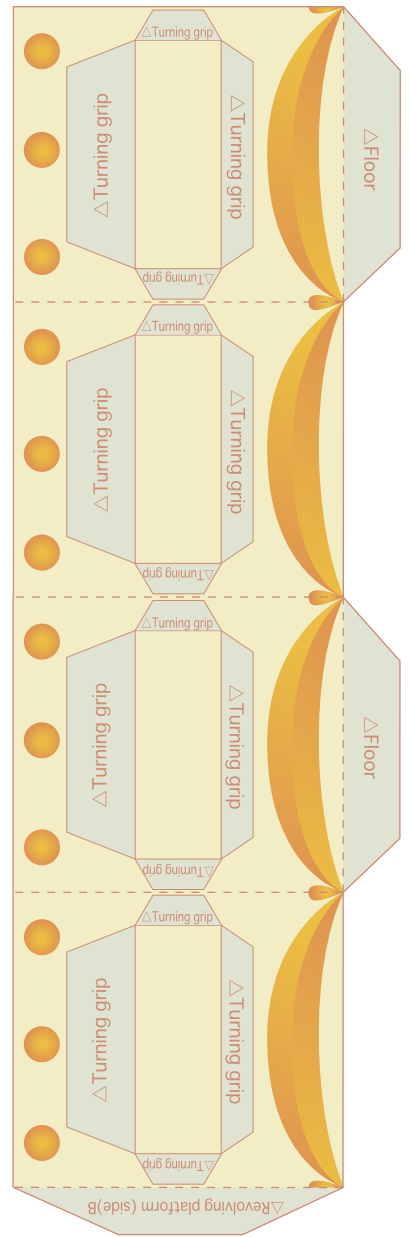
Revolving platform (side C)



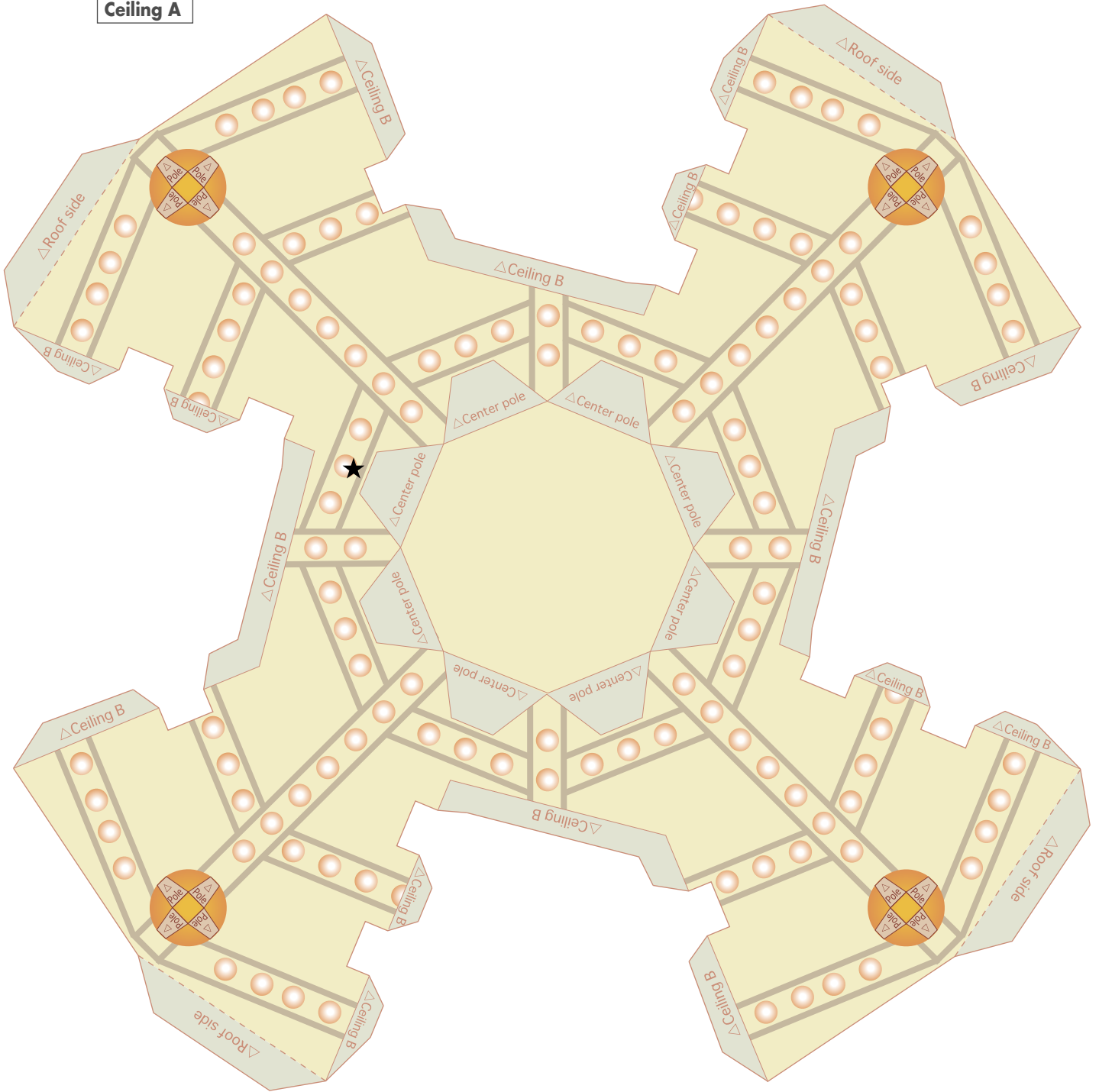
Revolving platform (side B)

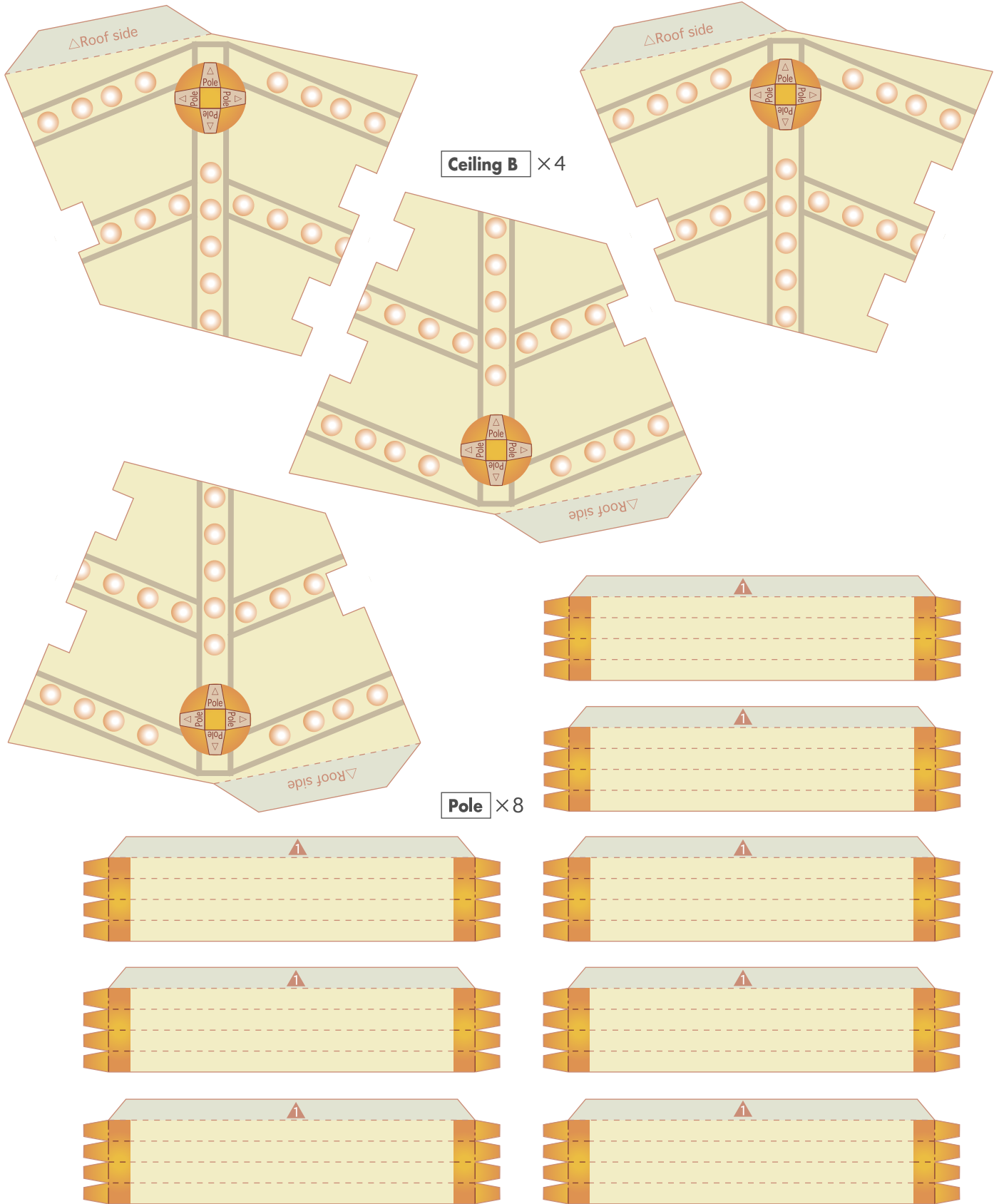


Revolving platform (side A)

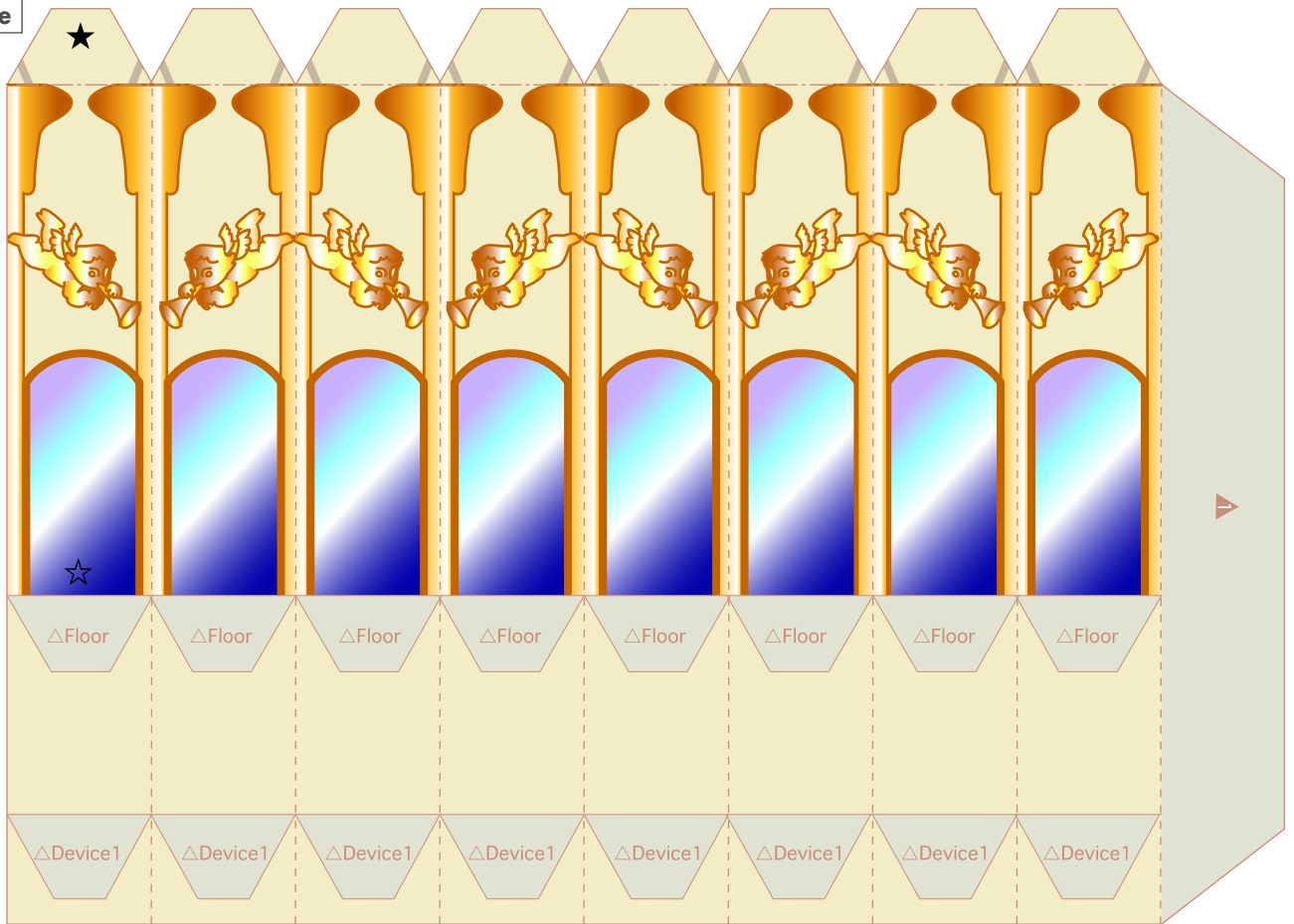


Ceiling A





Center pole



Brown horse A



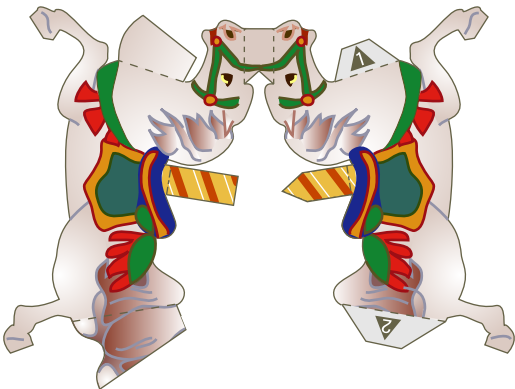
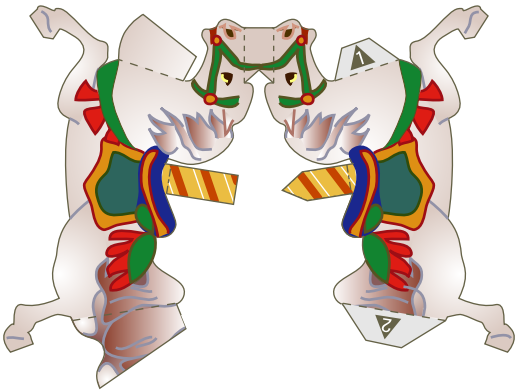
Brown horse B



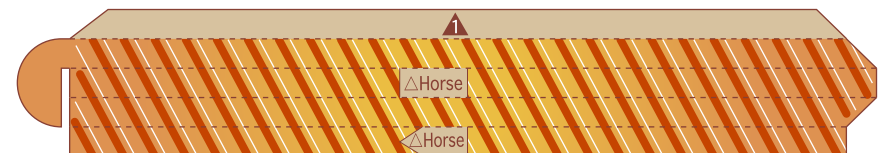
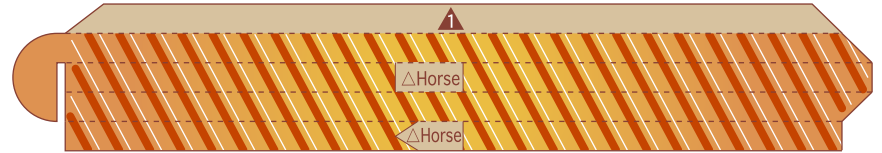
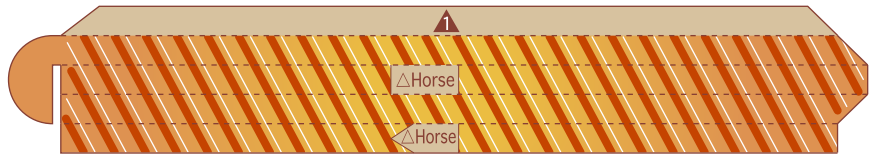
Horse pole × 2



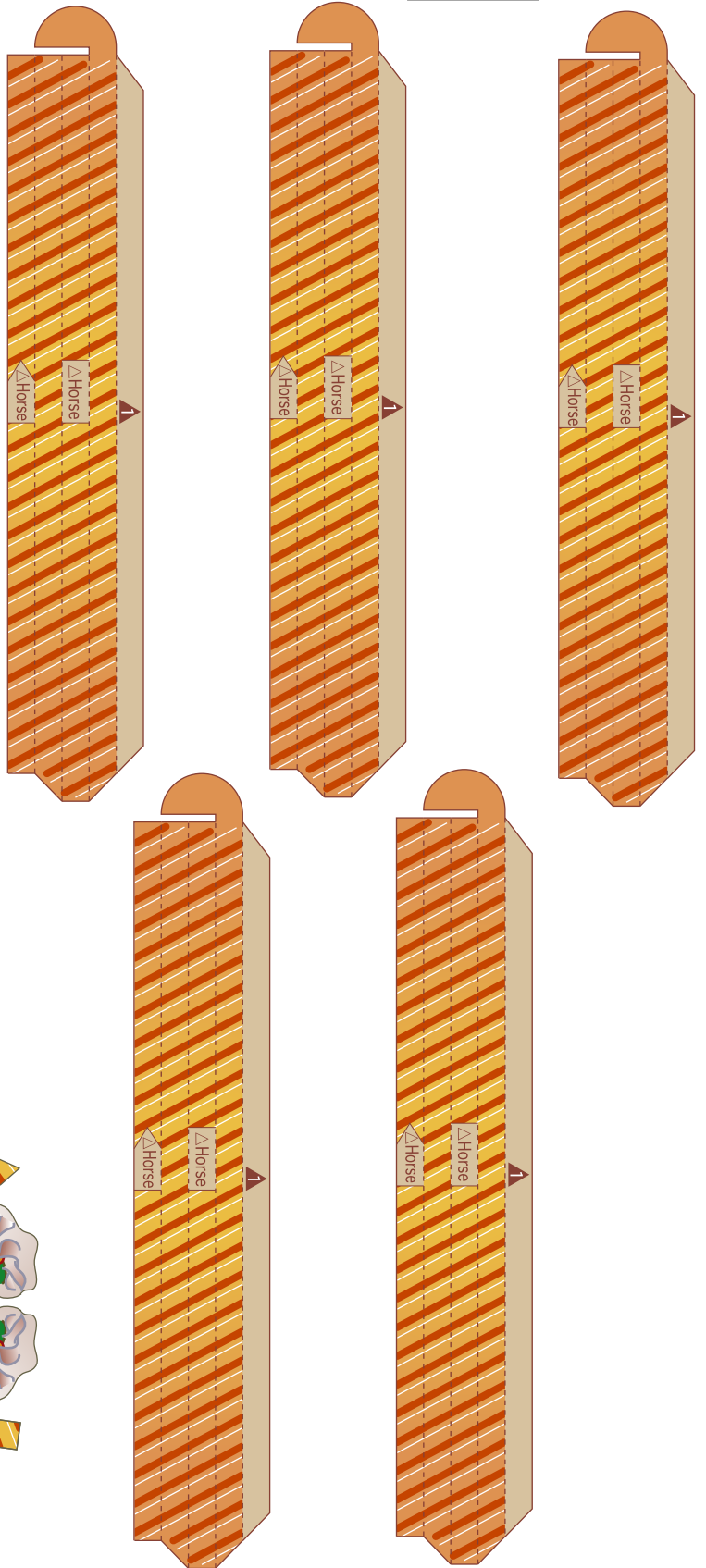
White horse A × 5



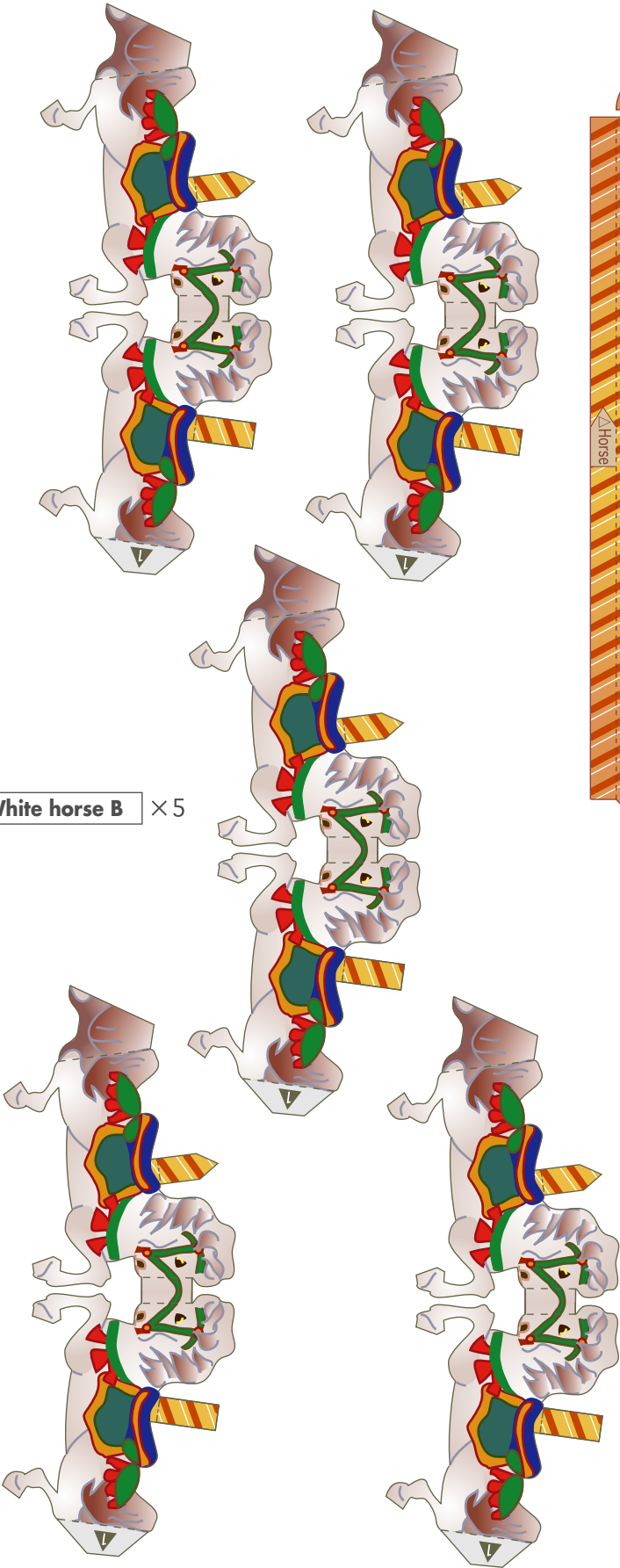
Horse pole × 5



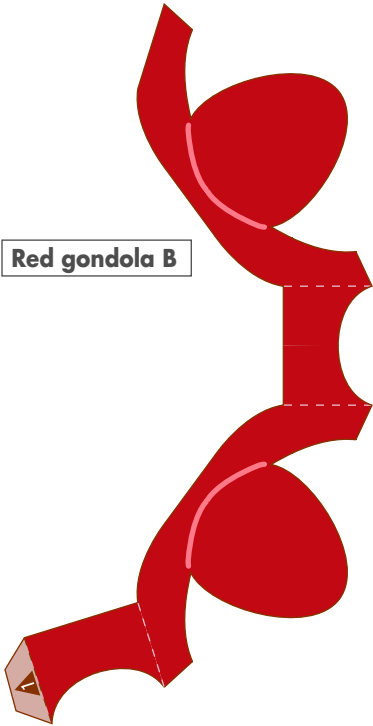
Horse pole × 5



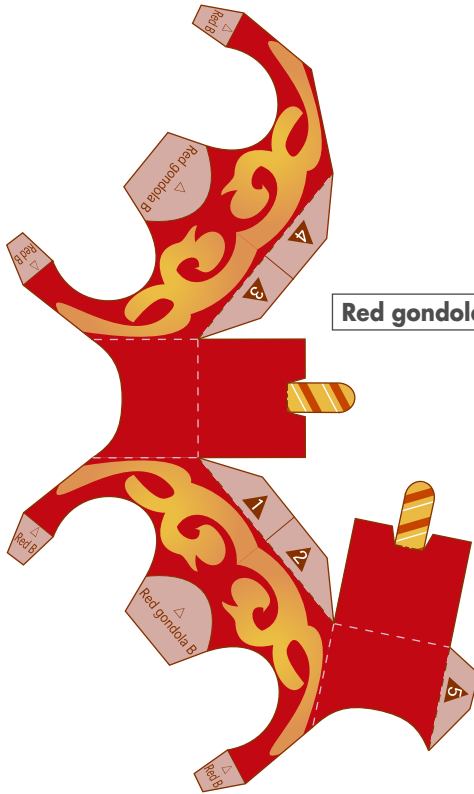
White horse B × 5



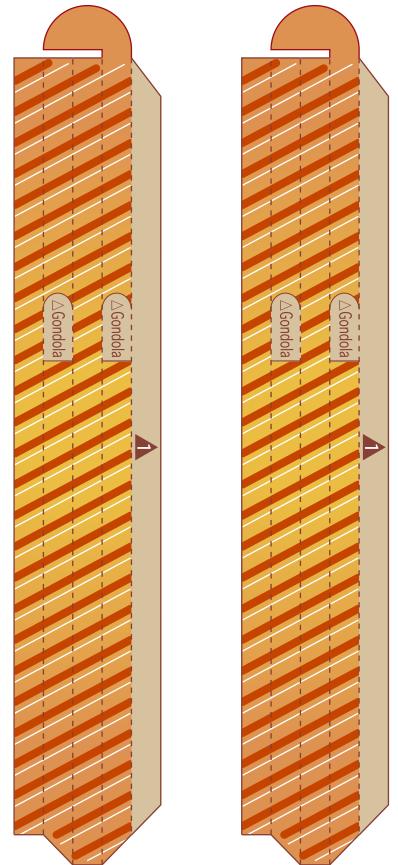
Red gondola B



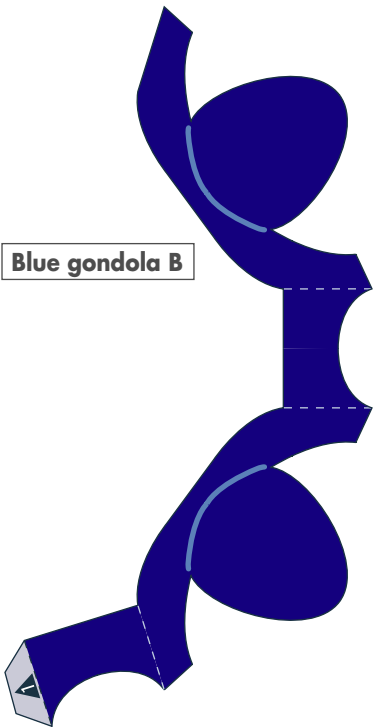
Red gondola A



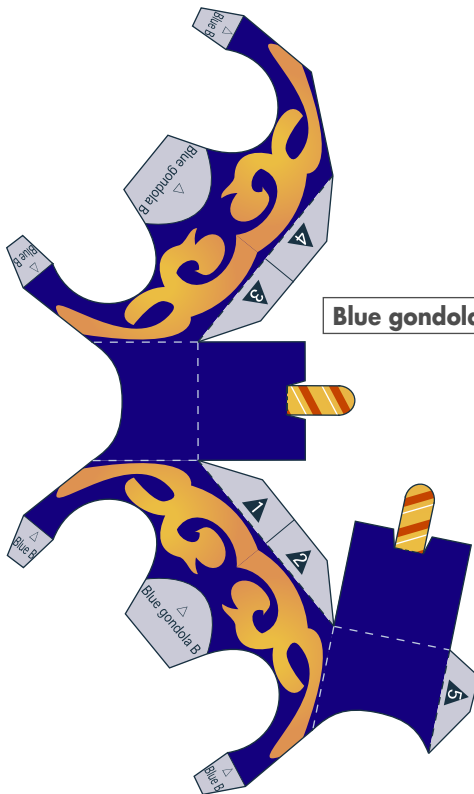
Gondola pole × 2

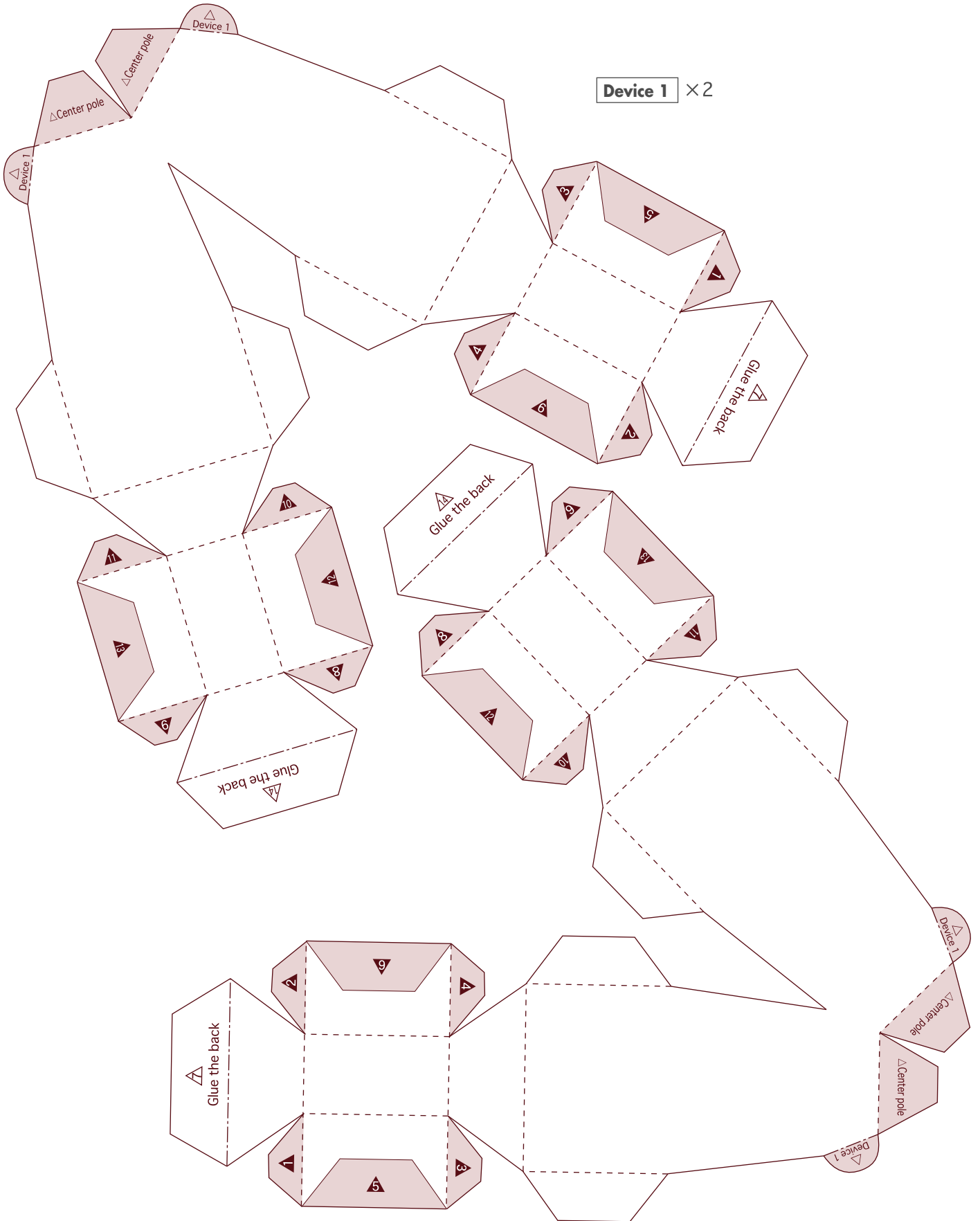


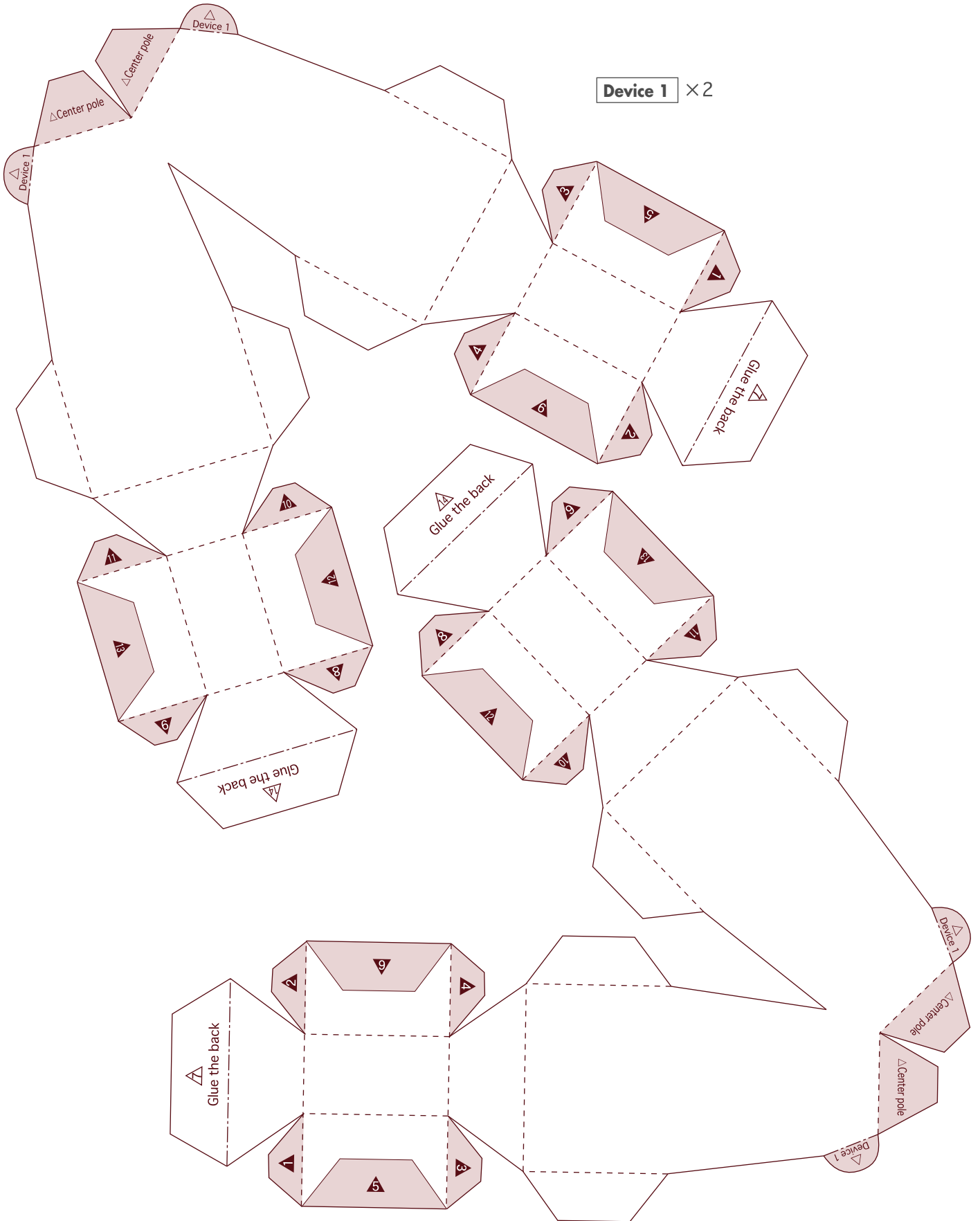
Blue gondola B



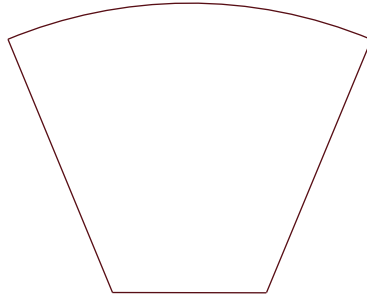
Blue gondola A







Device 2B



Device 2A

