

PAPER CRAFT

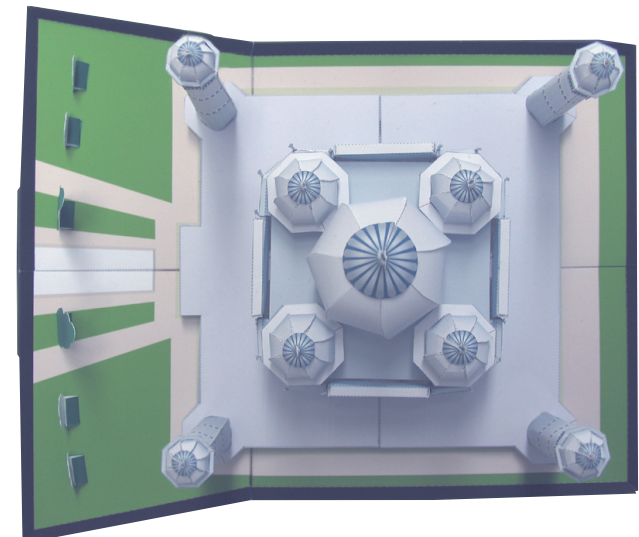
<http://www.canon.com/c-park/en/>



Front view



Overhead view



View of completed model

Taj Mahal, India

The Taj Mahal is a palatial mausoleum built by the fifth Mughal emperor Shah Jahan in memory of his favorite wife. It was built over a period of 22 years, starting from 1632, by approximately 20,000 workers. With a white marble mosque, front gate, and other structures of perfect symmetry, the Taj Mahal is truly a work of art in every detail.

*This model was designed for Papercraft and may differ from the original in some respects.

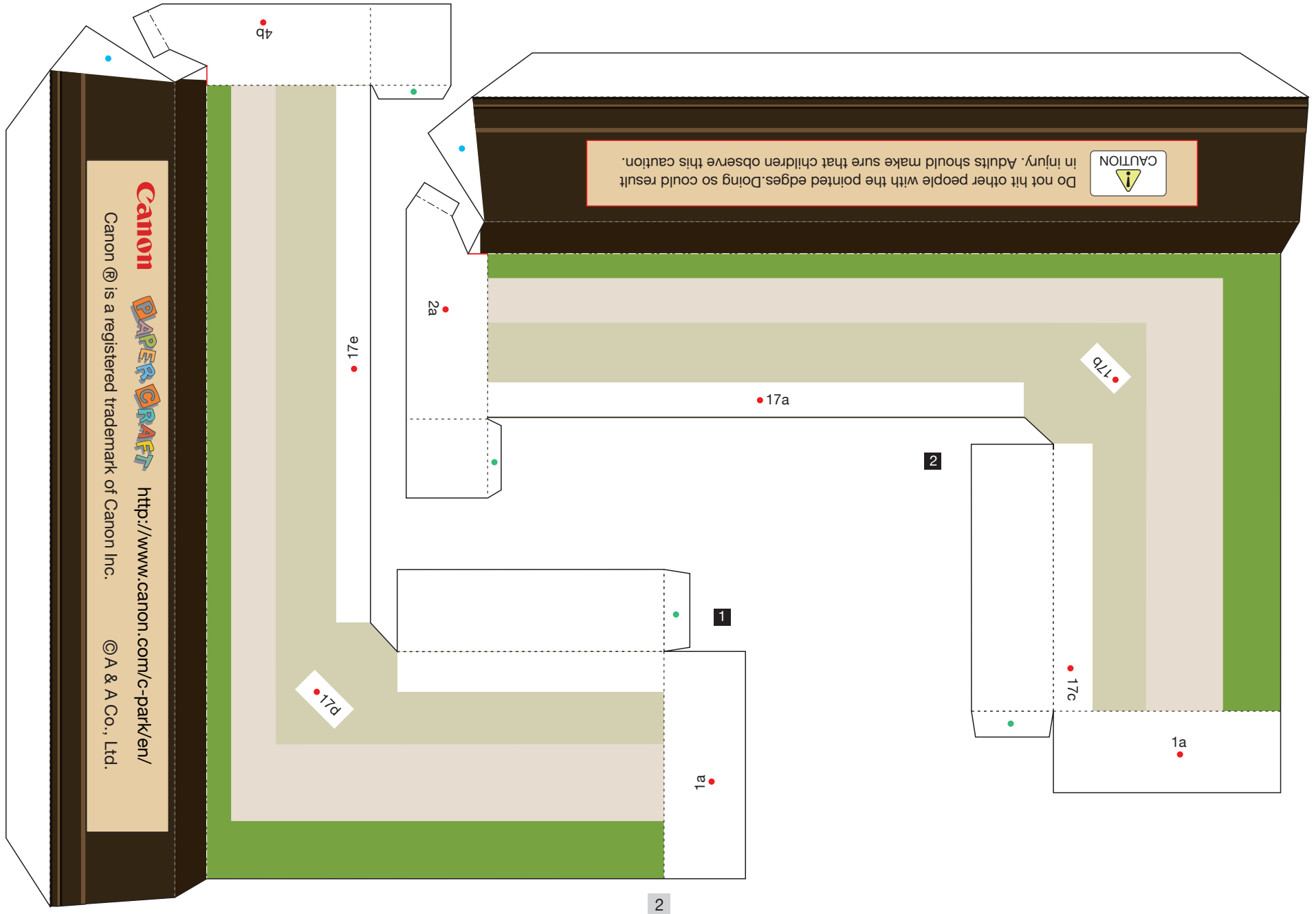
■ Parts list(pattern): Ten A4 sheets(No.1 to No.10)

■ No. of Parts:82

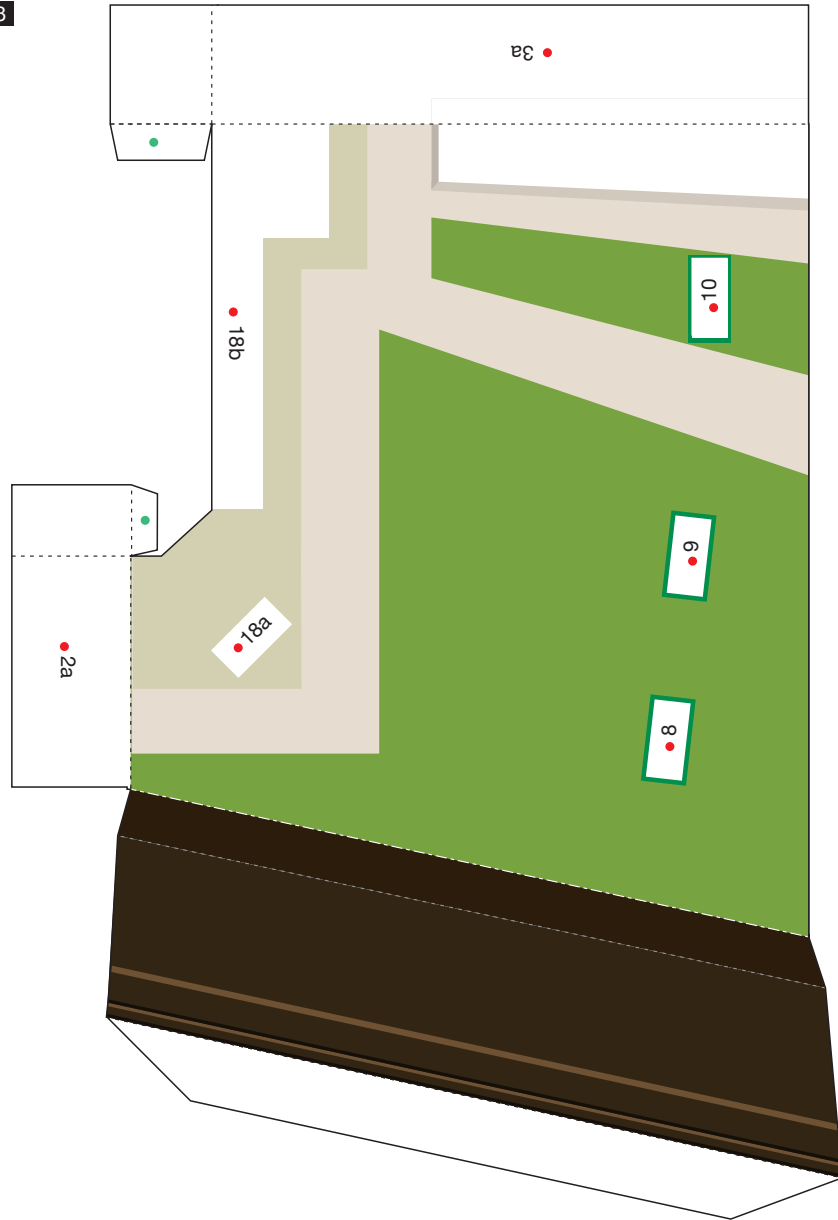
*Build the model by carefully reading the Assembly Instructions, in the parts sheet page order.

Taj Mahal, India: Pattern

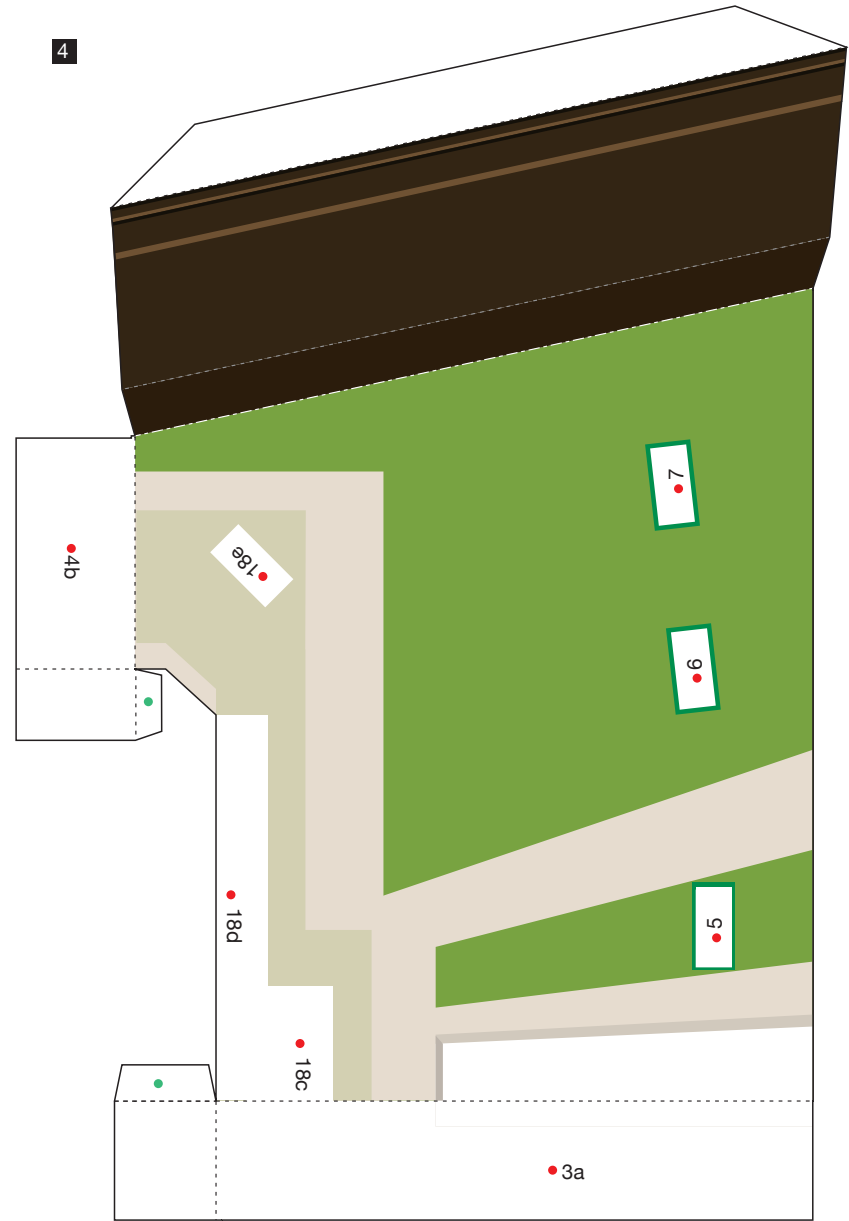
Canon ® is a registered trademark of Canon Inc. © Canon Inc. © A & A Co., Ltd.



3



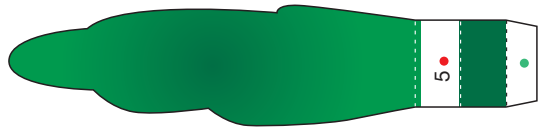
4



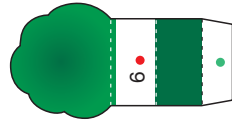
3

Taj Mahal, India: Pattern

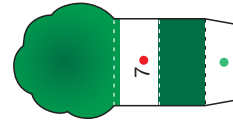
5



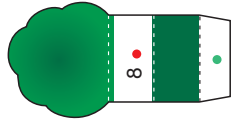
6



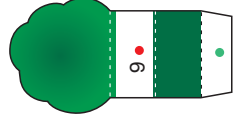
7



8



9



10



11



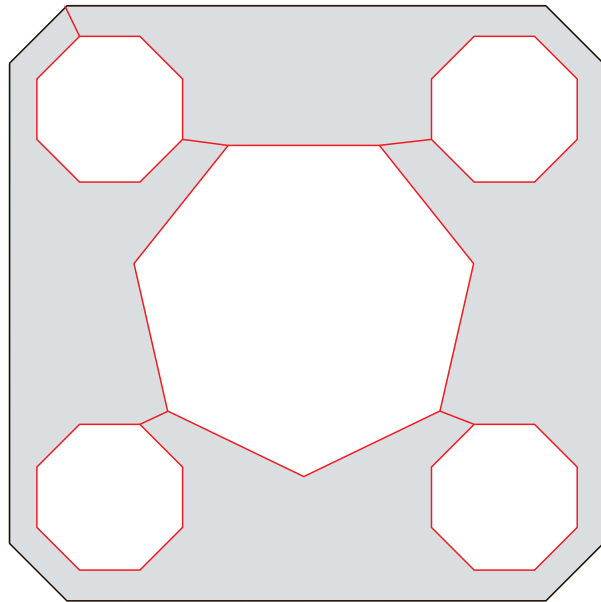
12

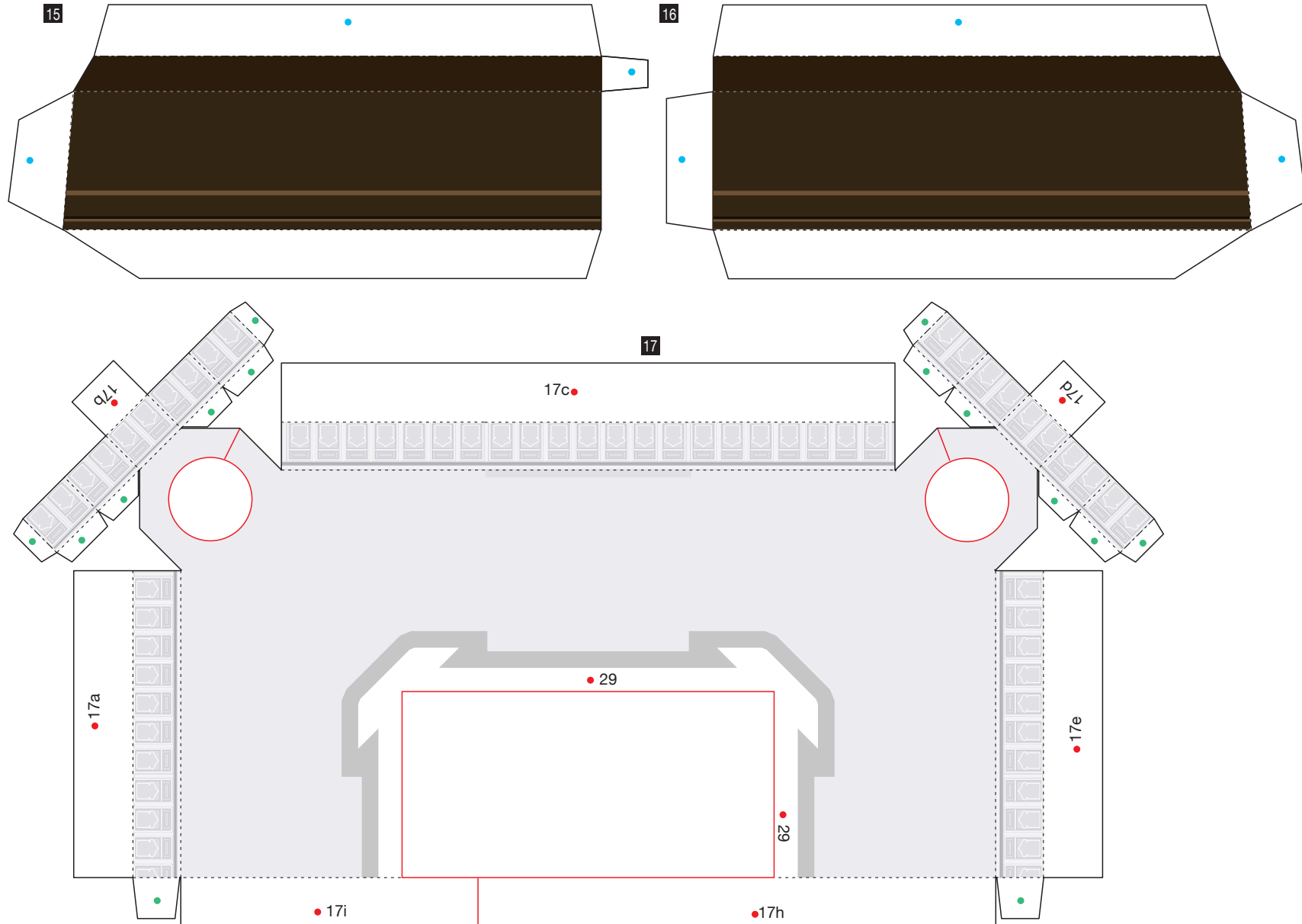


13



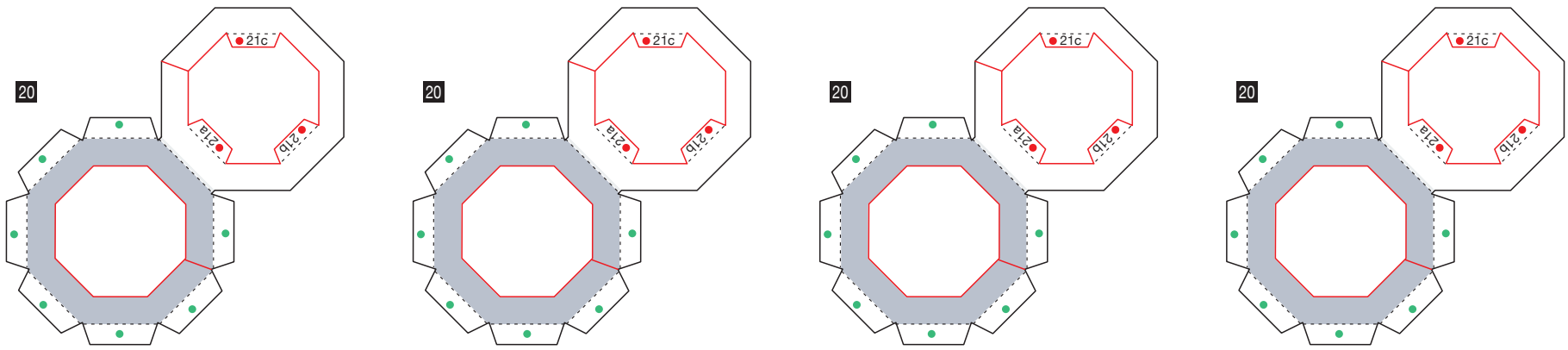
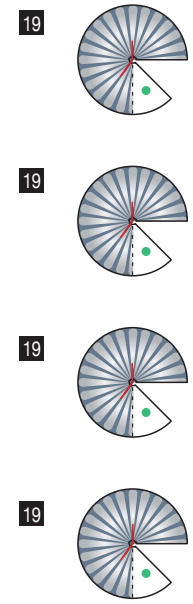
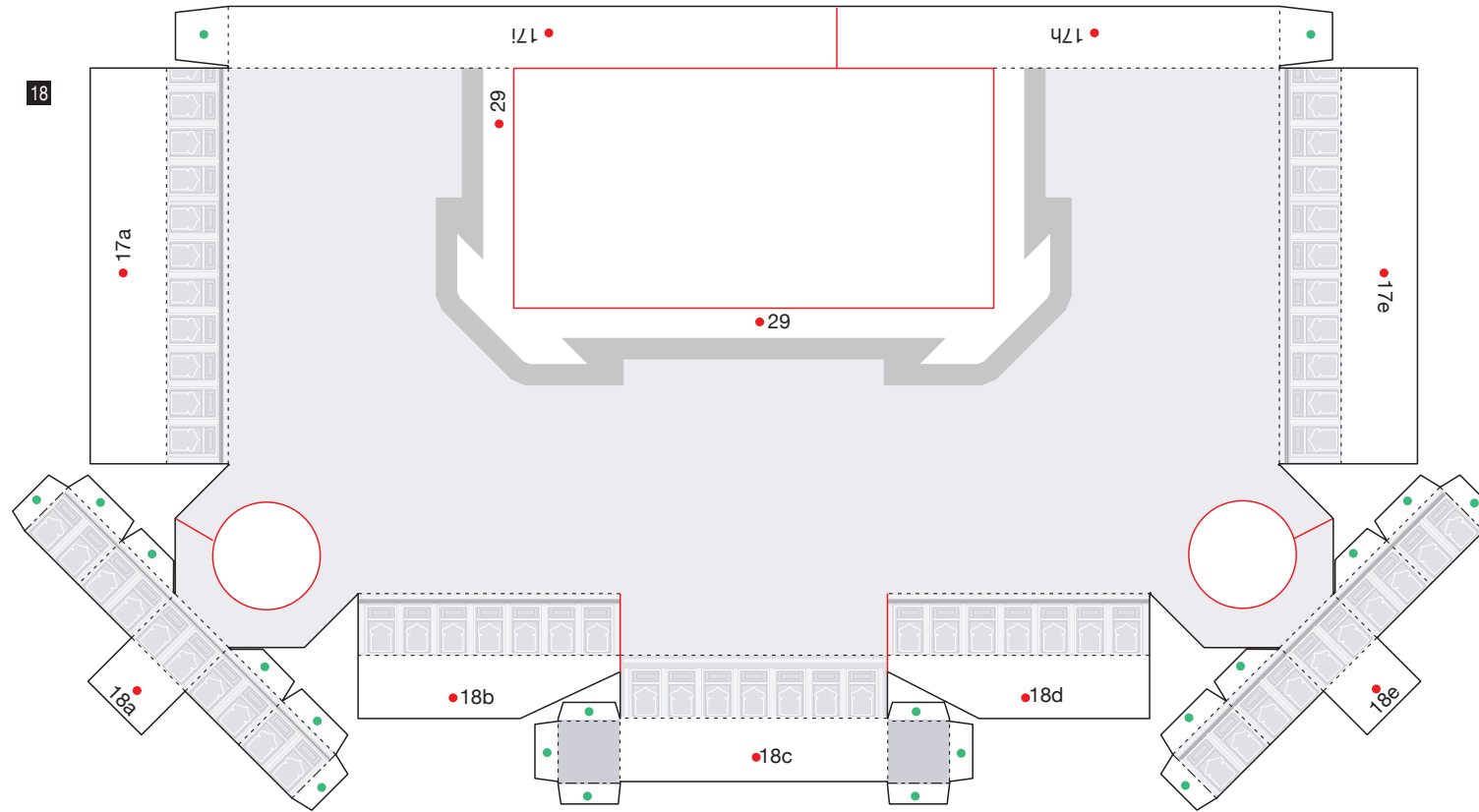
14





Taj Mahal, India: Pattern

Canon ® is a registered trademark of Canon Inc. © Canon Inc. © A & A Co., Ltd.

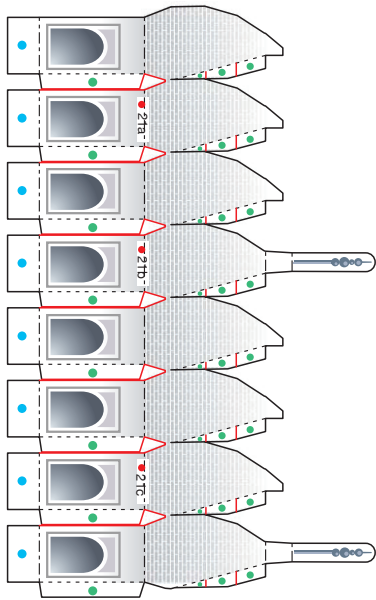


Taj Mahal, India: Pattern

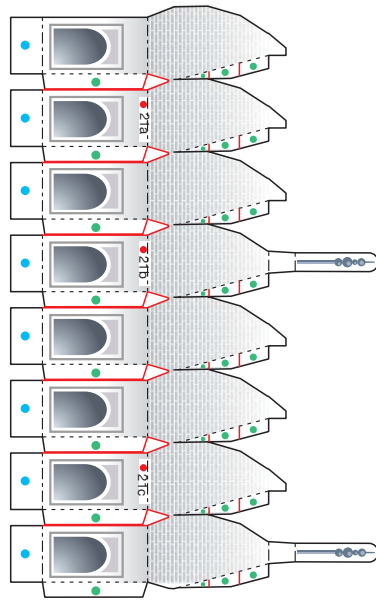
Canon ® is a registered trademark of Canon Inc. © Canon Inc. © A & A Co., Ltd.



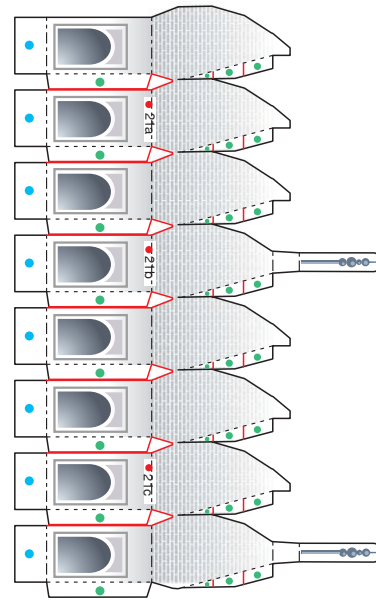
21



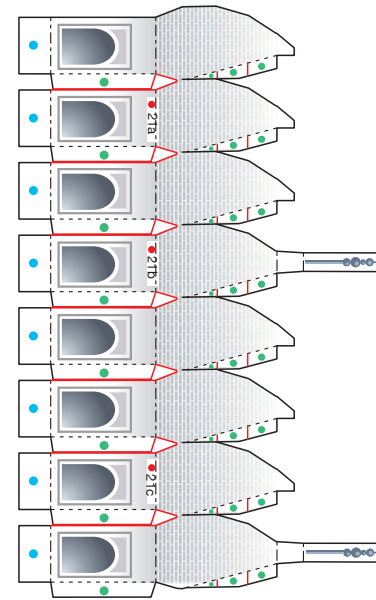
21



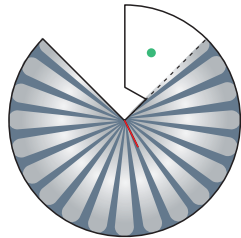
21



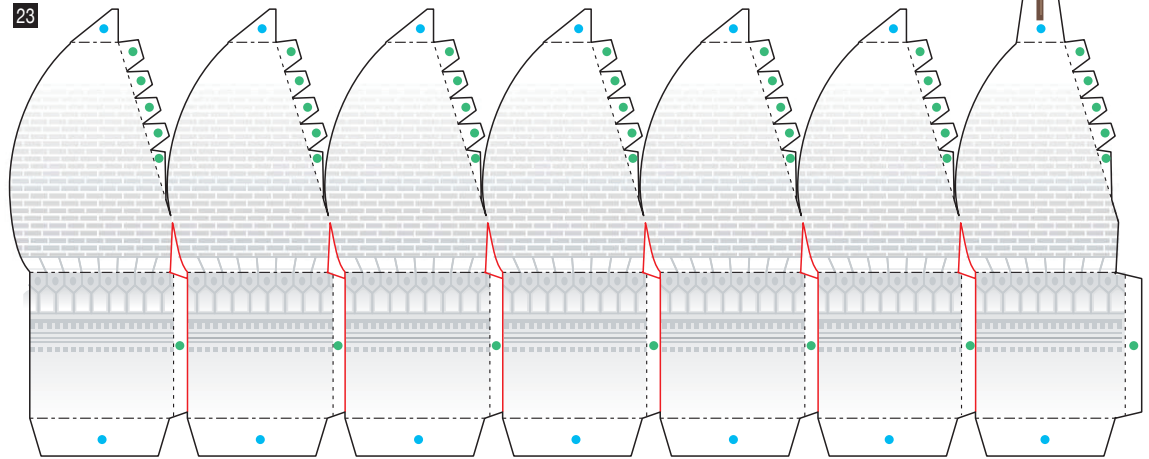
21



22

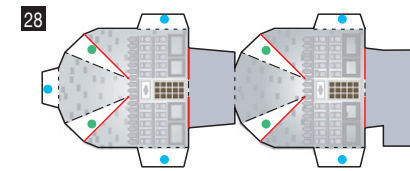
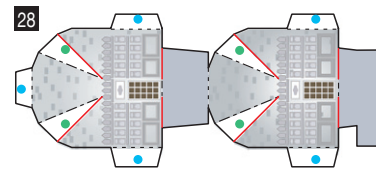
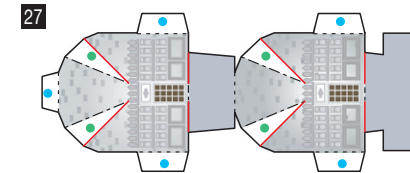
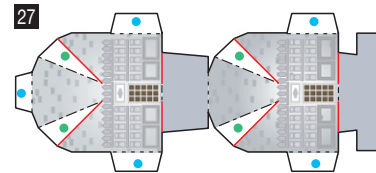
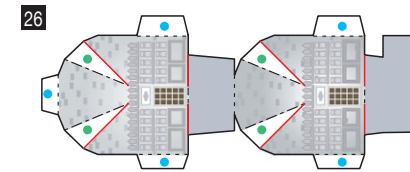
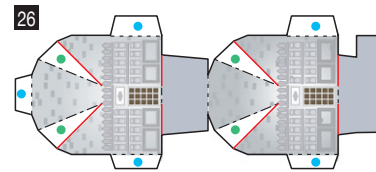
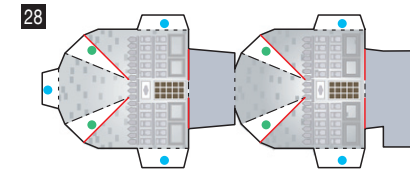
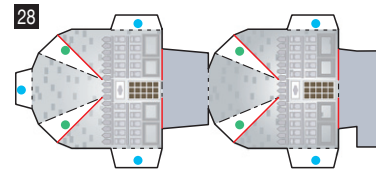
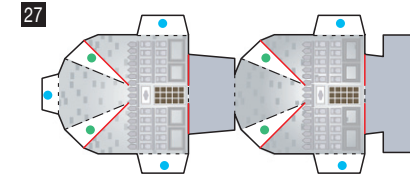
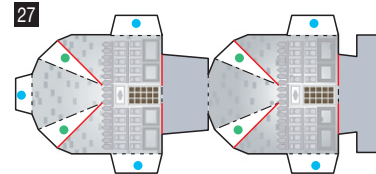
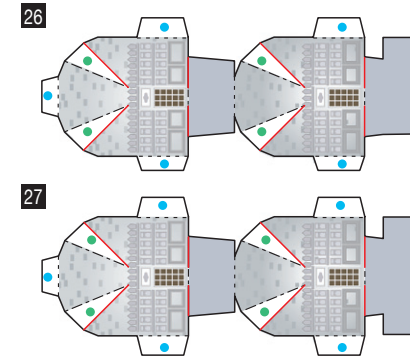
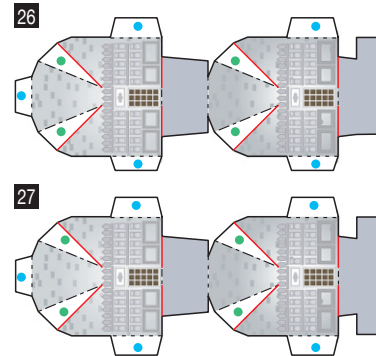
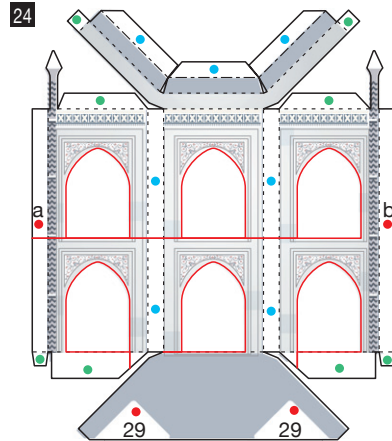
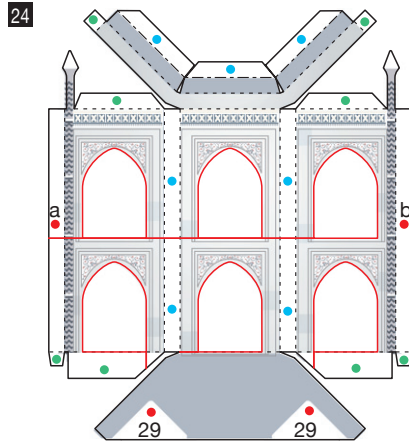
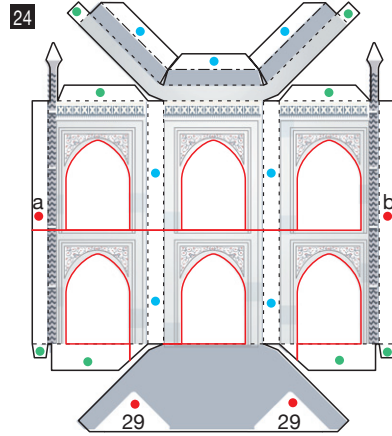
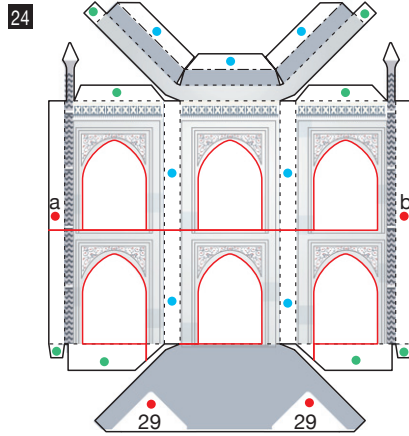


23



Taj Mahal, India: Pattern

Canon® is a registered trademark of Canon Inc. © Canon Inc. © A & A Co., Ltd.



Taj Mahal, India: Pattern

Canon ® is a registered trademark of Canon Inc. © Canon Inc. © A & A Co., Ltd.

