

LEGO CASTLE FORESTMAN MINIFIG

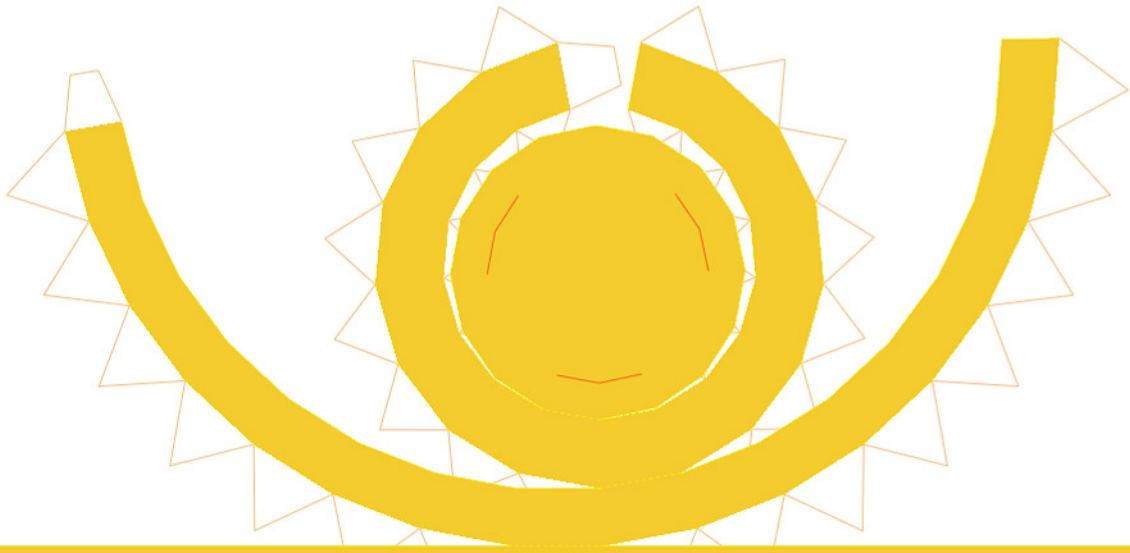
PAPERCRAFT MODEL BY NINJATOES



PAPERCRAFT FORESTMAN (LEADER)

Besides the blue, red and black FORESTMEN, there was also the FORESTMEN leader.

And did anybody really doubt that he was supposed to be Robin Hood? ;o)



H1

using thicker paper
(160-200 gsm) is
really recommended
because of the wear
and tear of the joints!



H2



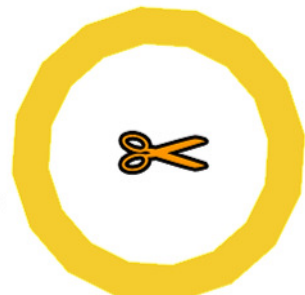
H3



H6

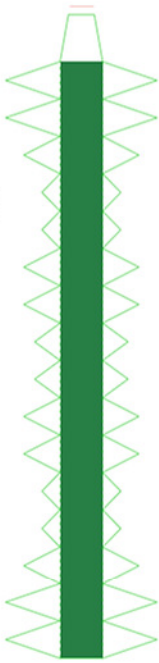


H5

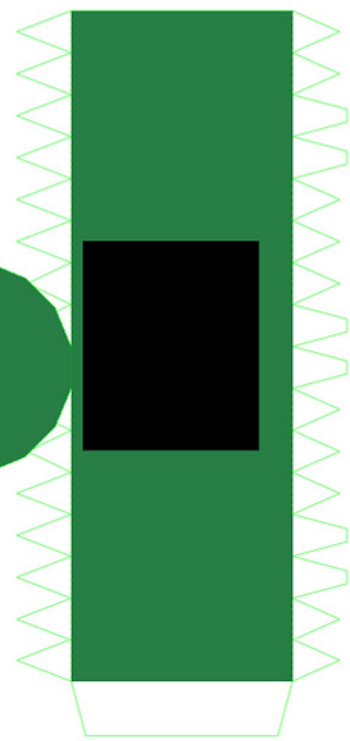
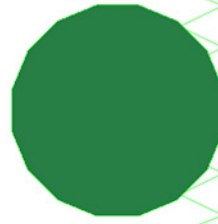


H4

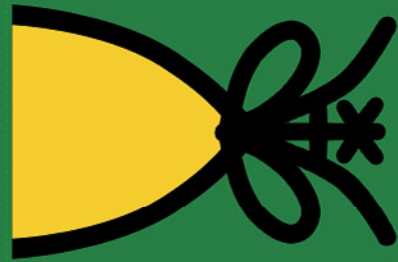
T9



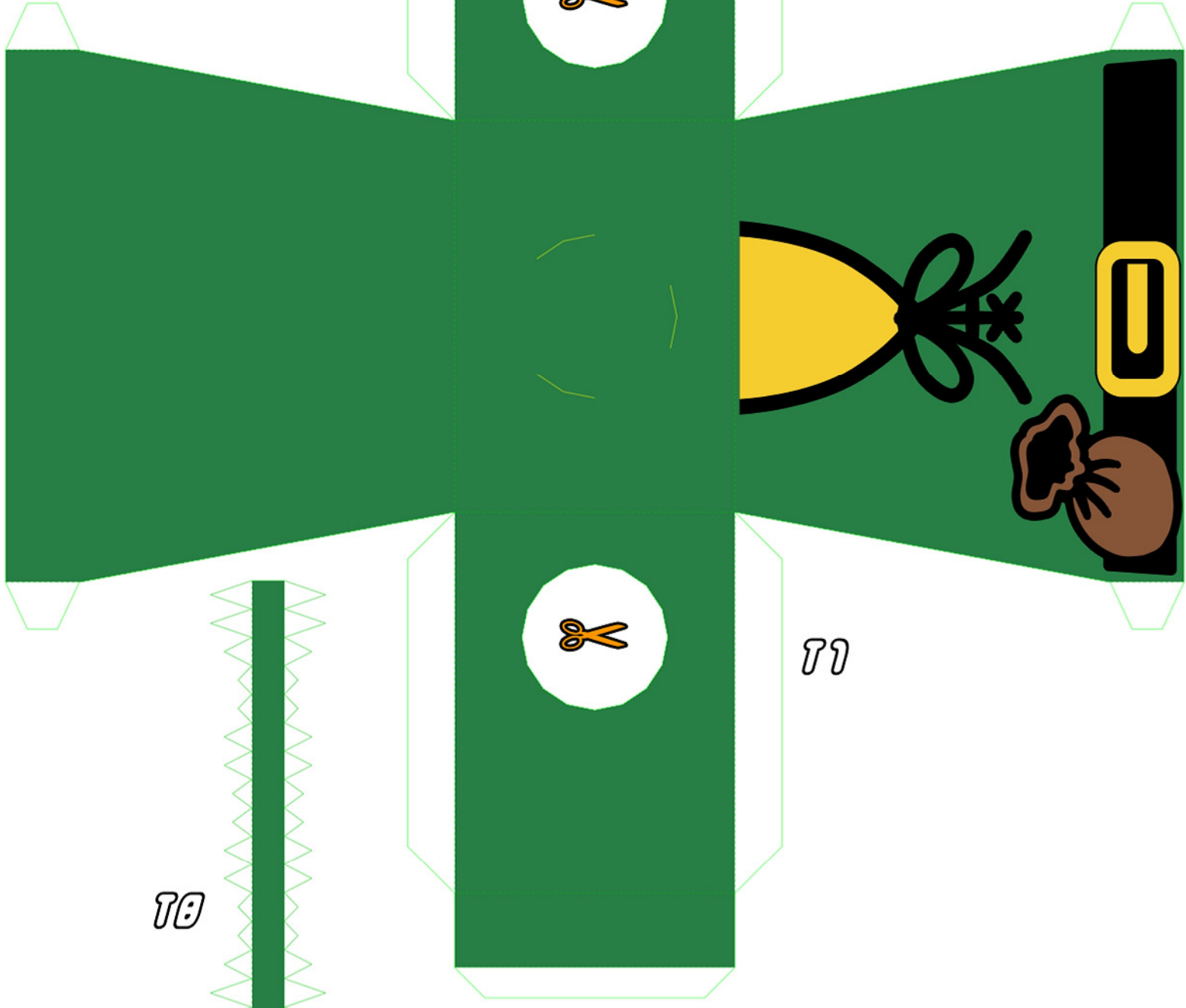
T10



T11



T8



T2



T3



T4

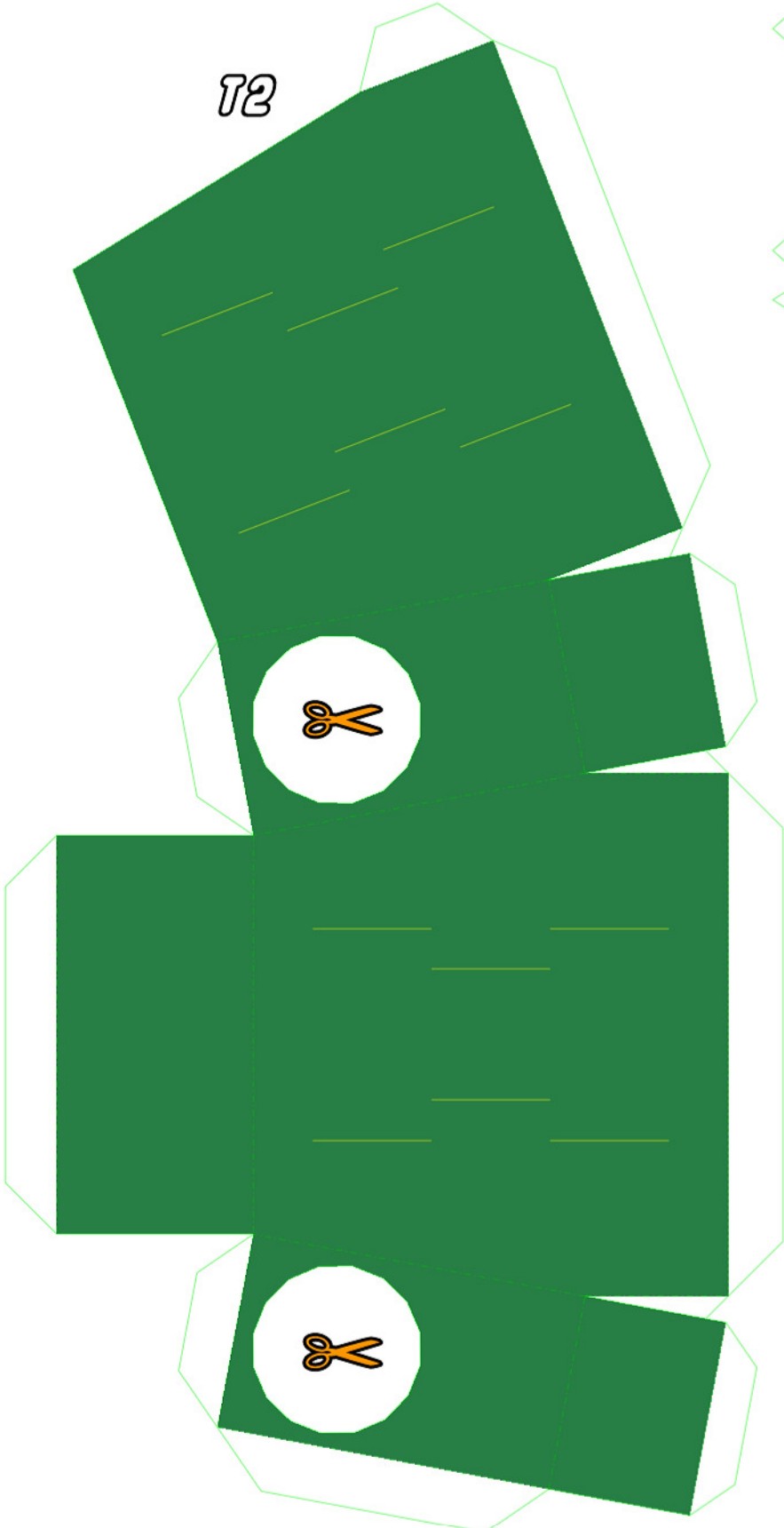
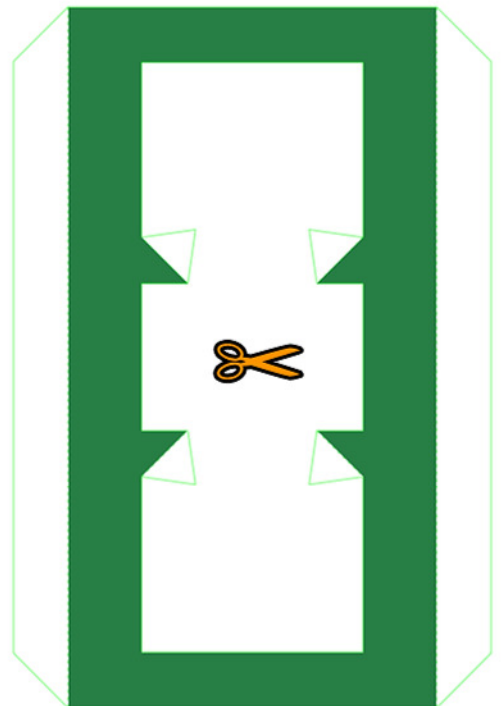
T5

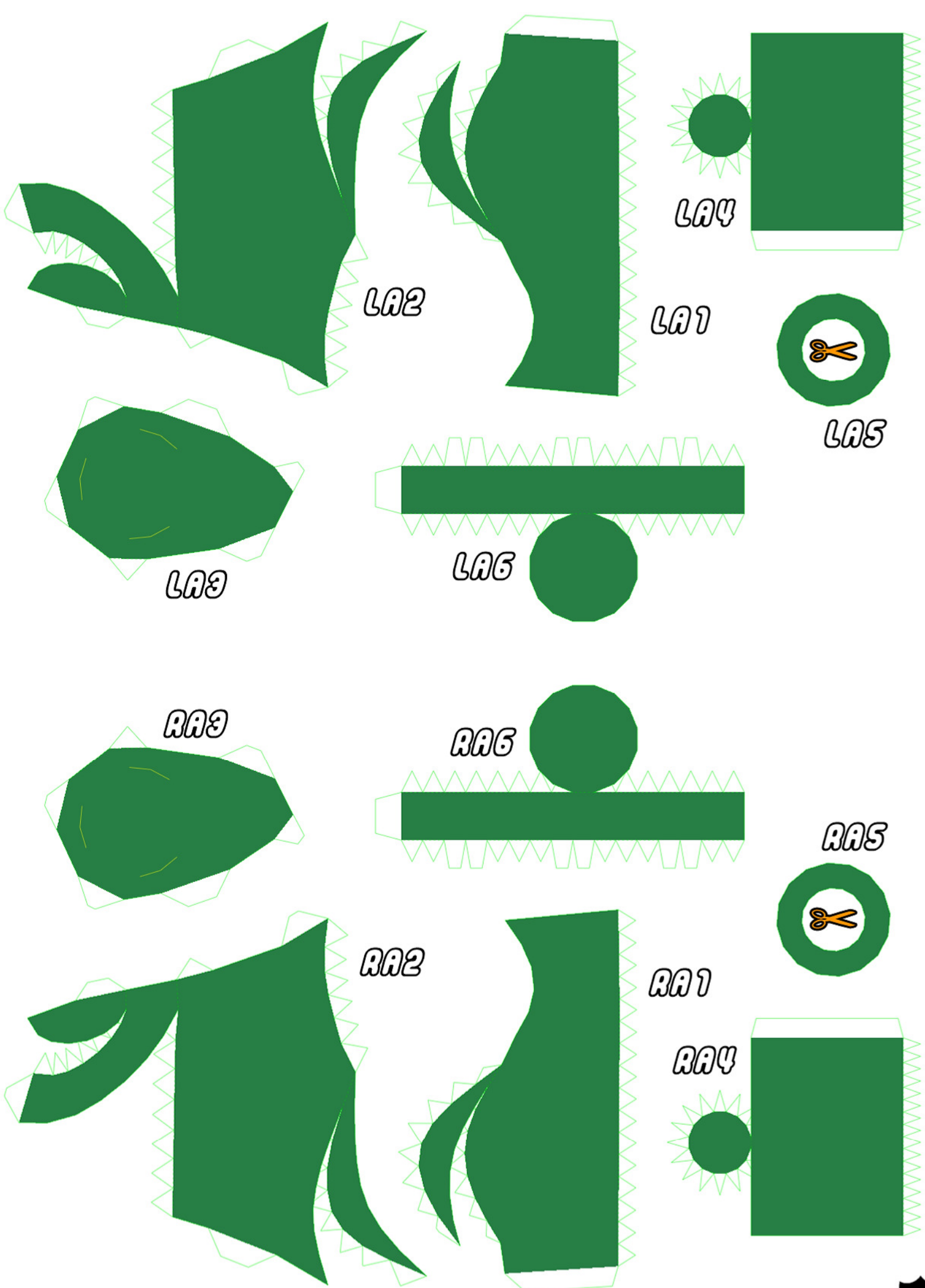


T6



T9





LA2

LA1

LA4

LA3

LA6

LAS

RA3

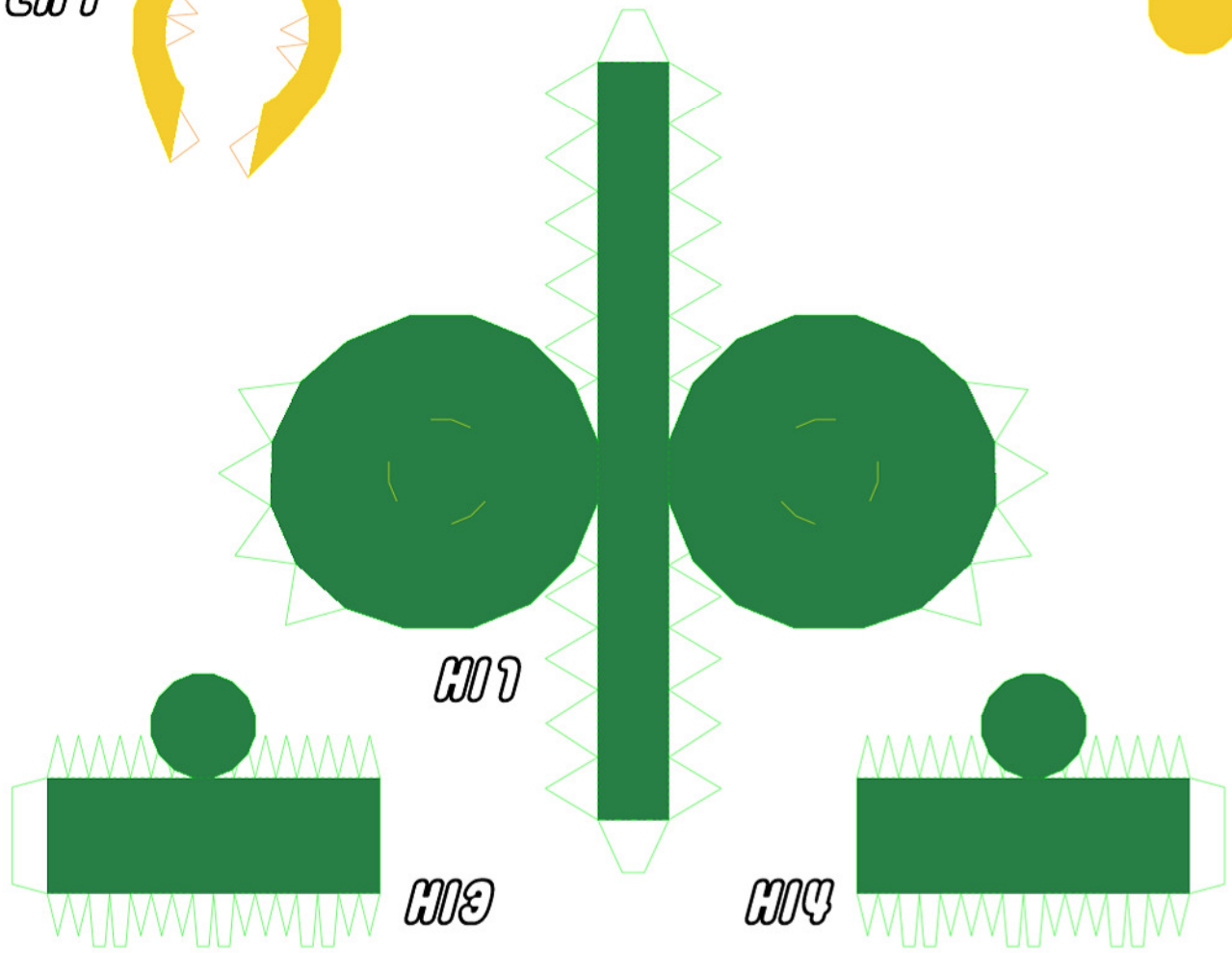
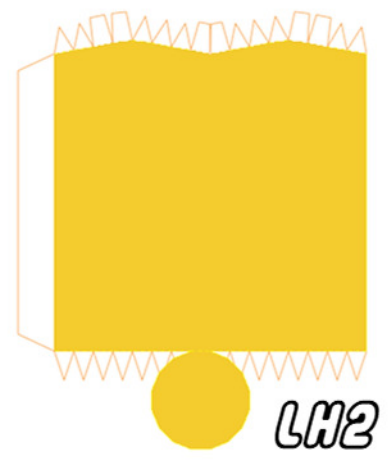
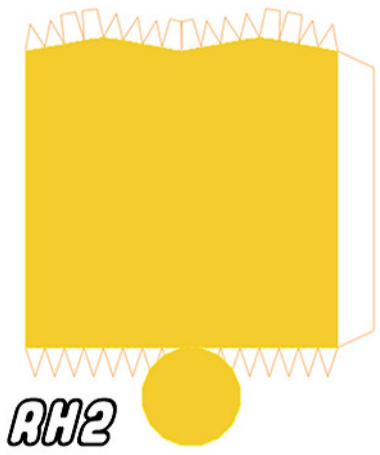
RA6

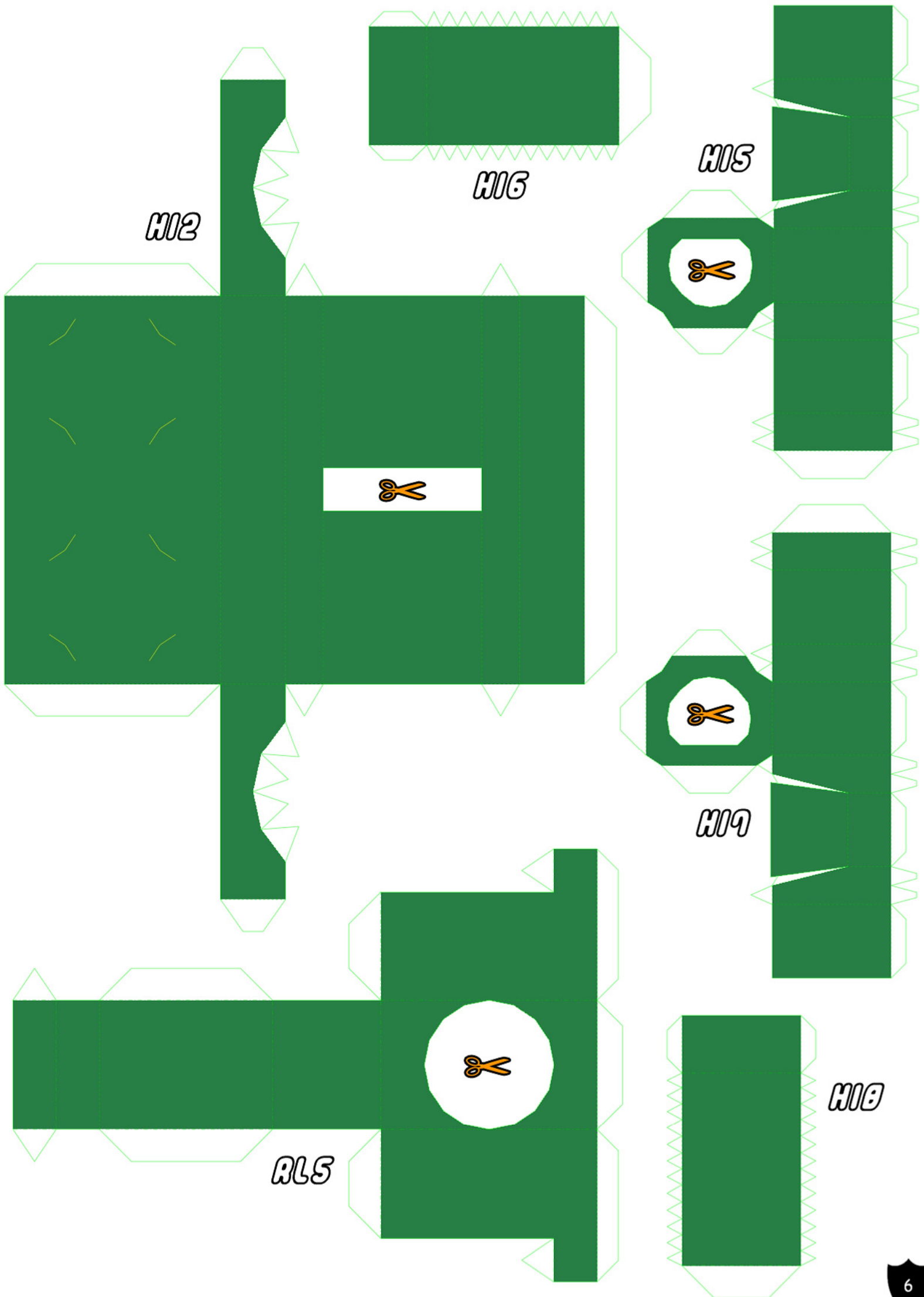
RAS

RA2

RA1

RA4





H02

H06

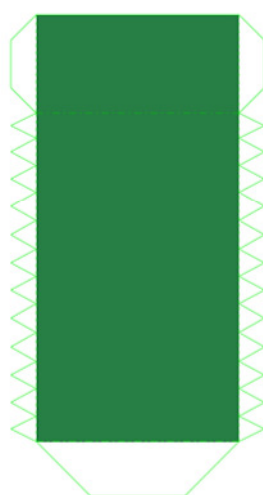
H05



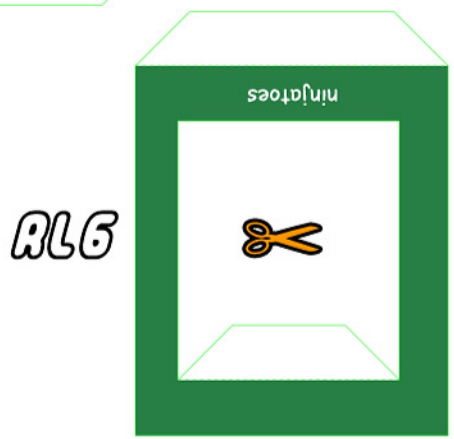
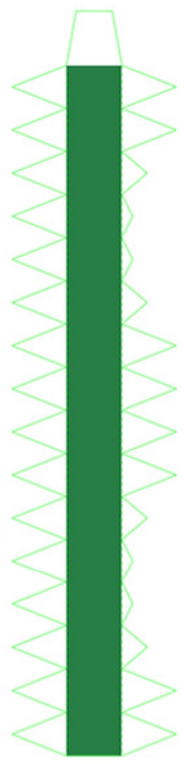
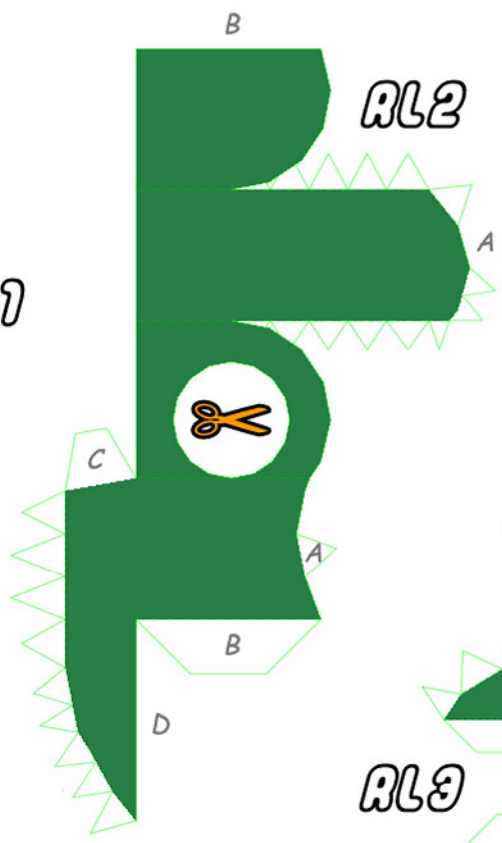
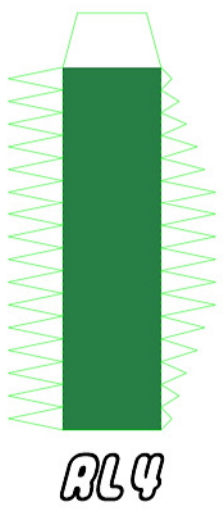
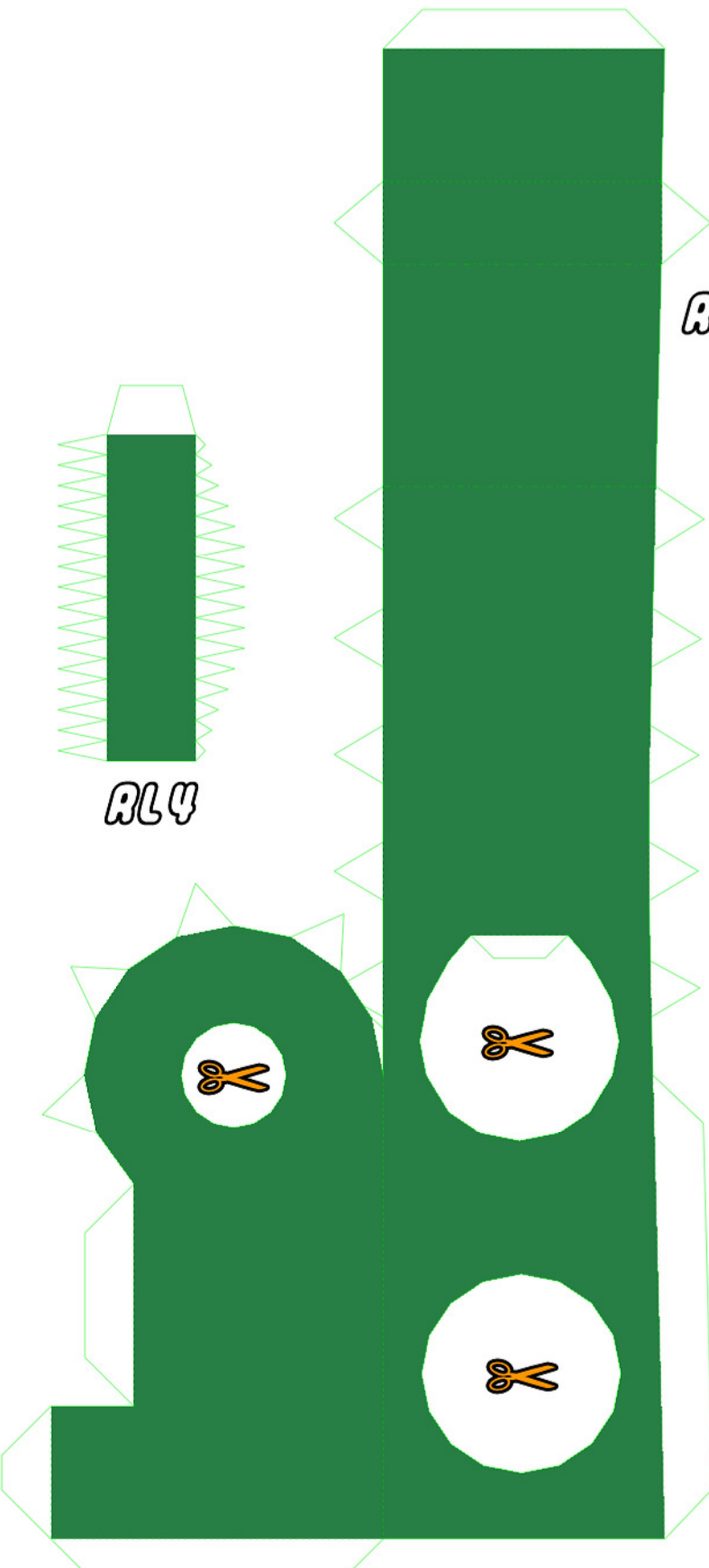
H04

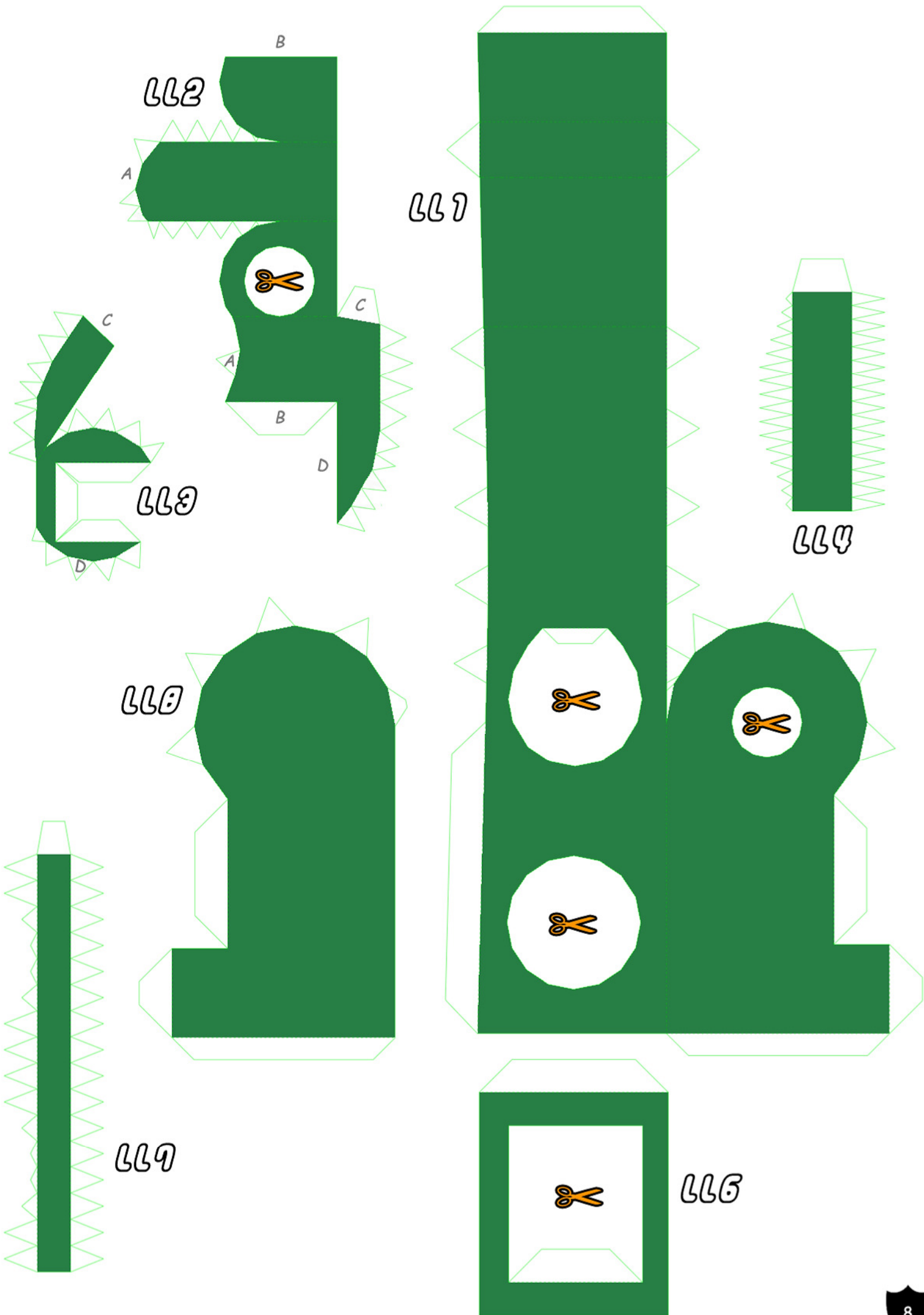


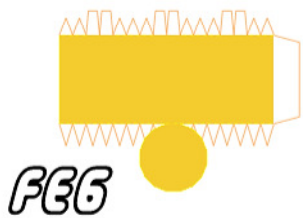
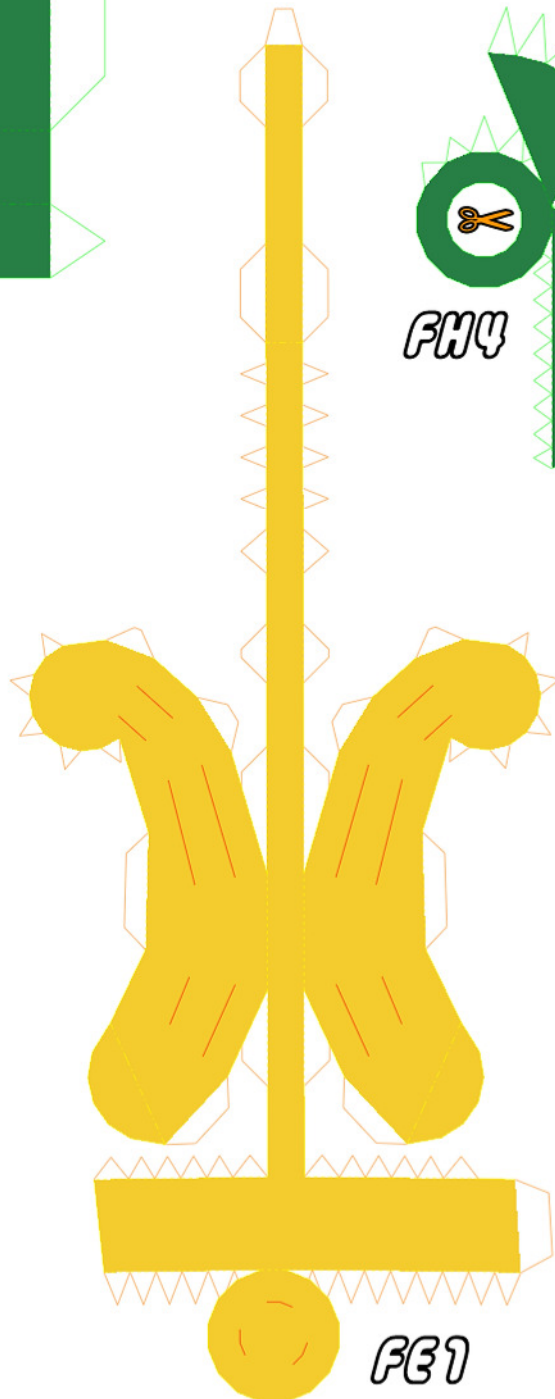
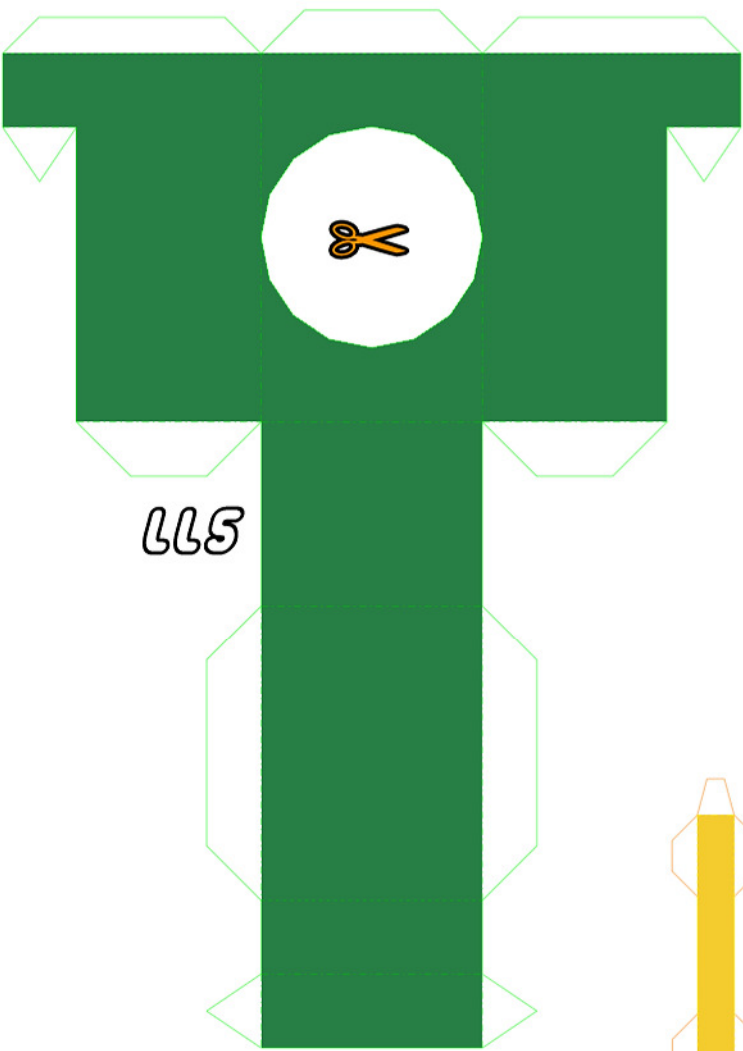
H08



H09







FH9

FH9



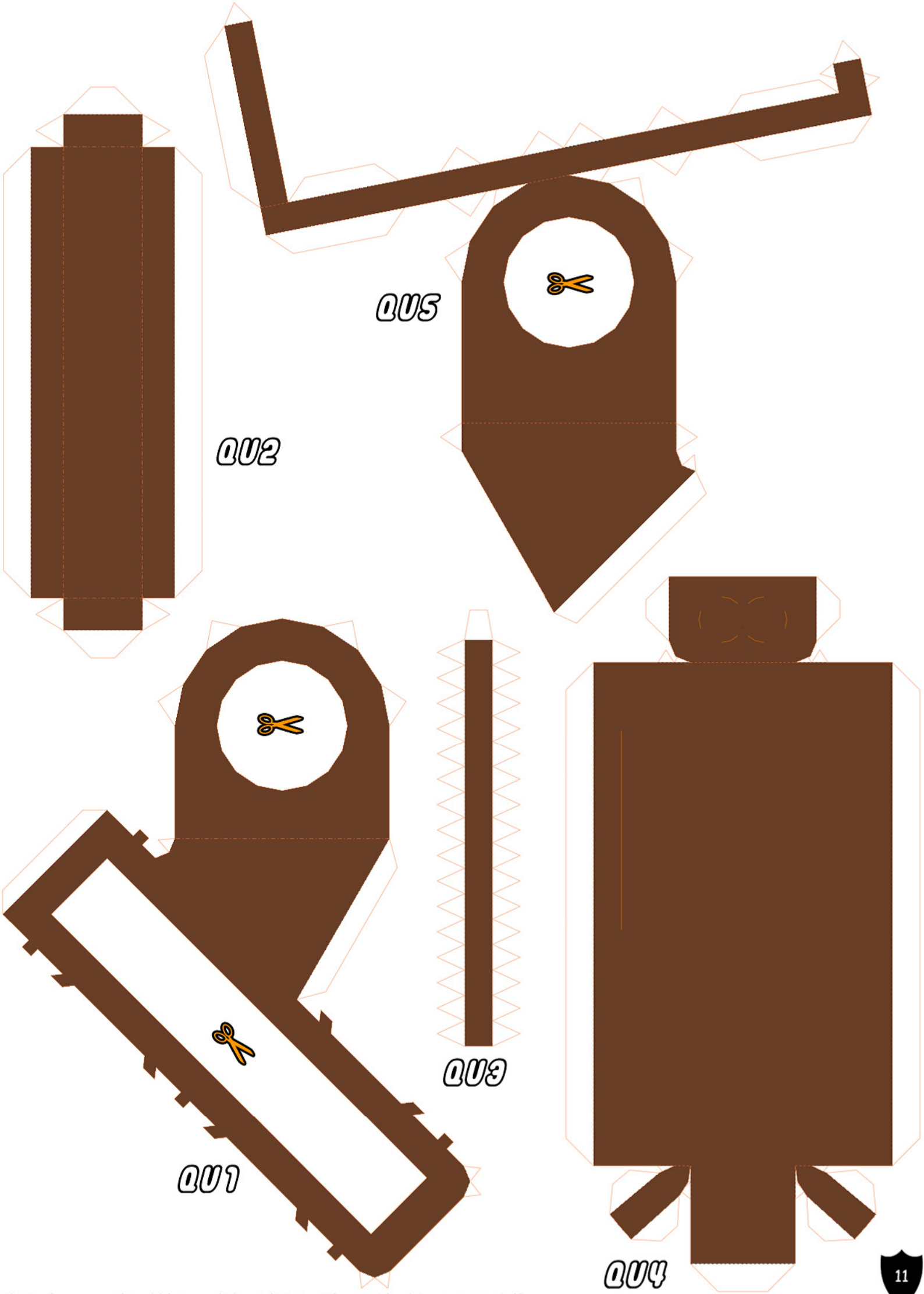
FH10

FH6



FH8

FH5



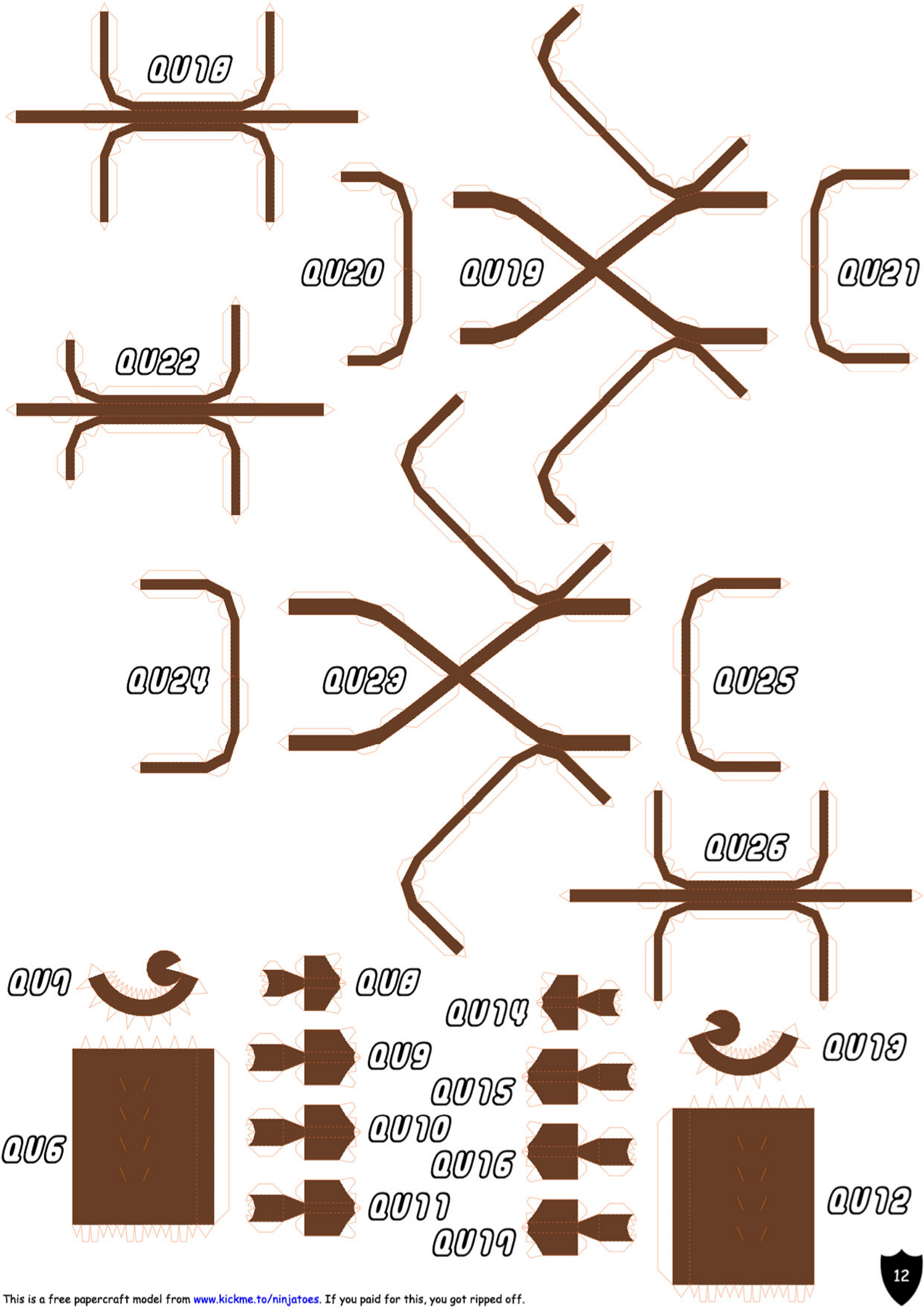
QU5

QU2

QU3

QU1

QU4



Q018

Q020

Q019

Q021

Q022

Q024

Q023

Q025

Q026

Q009

Q008

Q014

Q013

Q006

Q009

Q015

Q012

Q010

Q016

Q011

Q017



B011

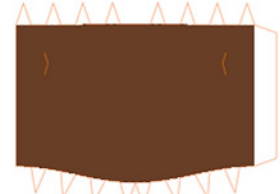


B012

B013



B005



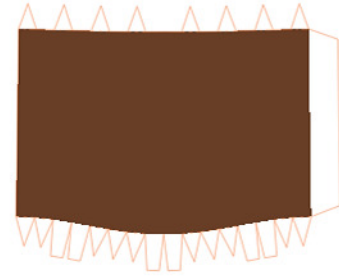
B004



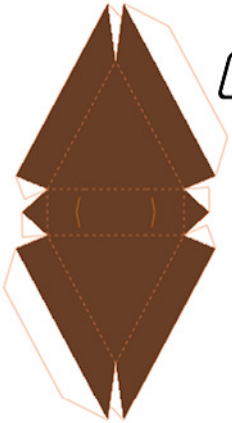
B003



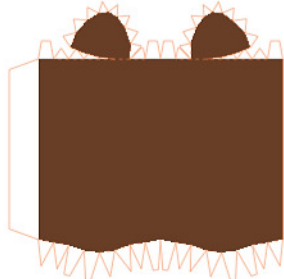
B002



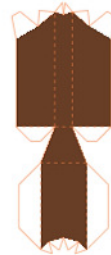
B001



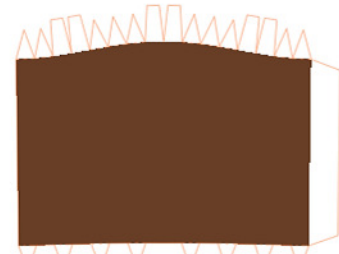
B029



B026



B025



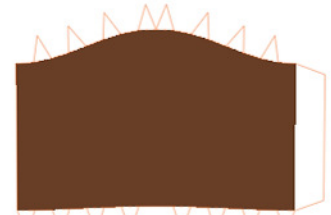
B006



B020



B024



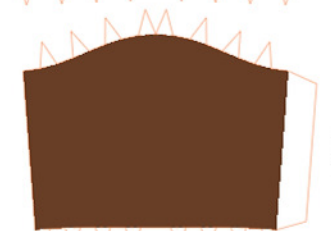
B007



B019



B023



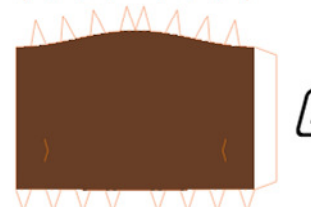
B008



B018



B022



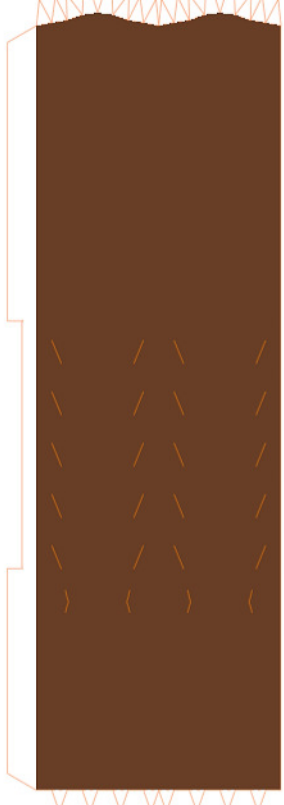
B009



B017



B021



B014



B015



B010

B016

